

DUBLIN URBAN RIVERS LIFE PROJECT



- A LOCAL AUTHORITY ENGINEER'S PERCEPTION OF MISCONNECTIONS

28TH MAY 2024

PAUL BUGGY





THE HOLY TRINITY OF URBAN POLLUTION

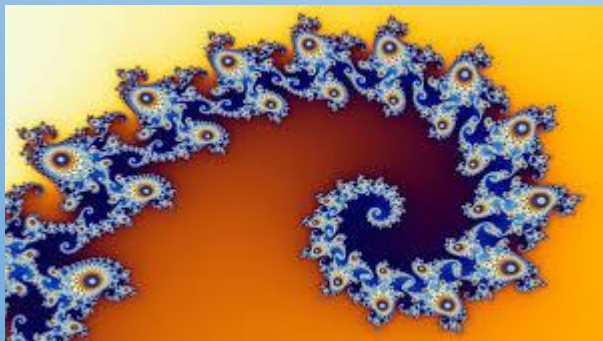
Rust Never Sleeps

Misconnections Never Sleep





5 Principles from the Project that all LA's can use





Principle No.1

It is a truth universally acknowledged...

That urban pollution enters streams via outfalls



How well do you know your outfalls?

For the polluted stream in question:

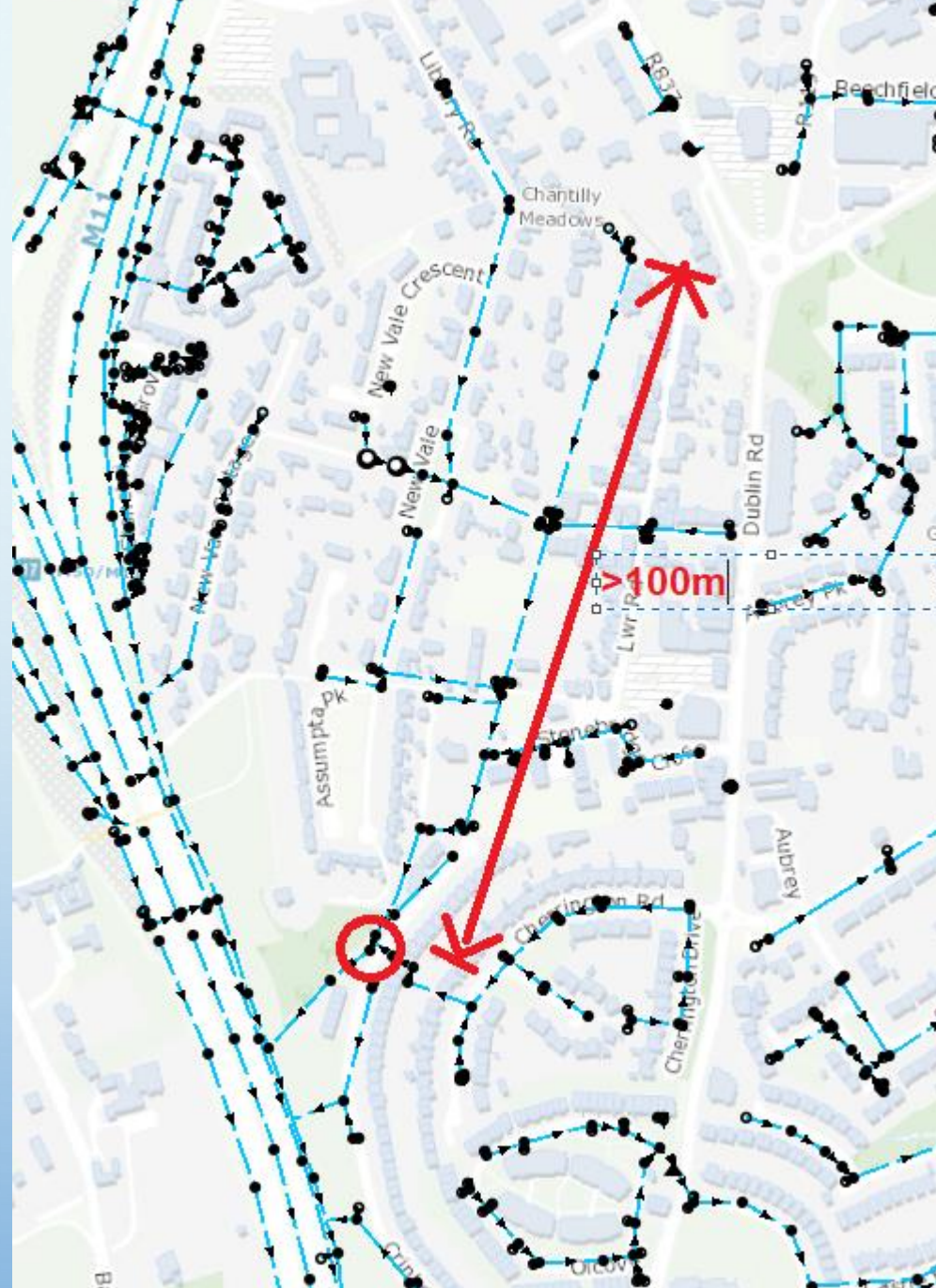
- **Have you surveyed every outfall on your stream?**
- **If they are submerged, have you lifted the next upstream manhole cover?**
- **On a dry day, do they have discharges?**
- **What kind of discharges?**
- **What does the stream bed downstream tell you about the discharges?**
- **Is the bed discoloured?**
- **What kind of growth is on the stream bed. Is there evidence of faecal contamination?**
- **Where are your 10 worst outfalls?**

Principle No. 2

5 Dry Days



Principle No. 5
The 100m Rule



Principle No. 4

Times of the Day for sampling for Misconnections



Principle No 5



ENGAGE!





128 properties assessed

17 houses misconnected, 13%

A total of 23 misconnected items

11 of the houses have been repaired.





If we are persistent,

bring the locals along with us and

emphasise the benefits to their local stream

we will greatly improve water quality in our urban streams.

**Dublin Urban Rivers LIFE
(DURL) Project**



**An EU LIFE Funded Project by
South Dublin County Council
and Dún Laoghaire-Rathdown
County Council**

