

South Dublin County Local Community Development Committee

# Annual Report 2023



Coiste Forbartha Pobail Áitiúil  
Local Community Development Committees

# Contents

- 1 | Foreword by Local Community Development Committee  
Chairperson Tricia Nolan
- 2 | Members of the South County Dublin Local Community  
Development Committee
- 3 | Membership and Organisational structure of the South Dublin County Local  
Community Development Committee
- 4 | Report of Local Community Development Committee meetings in 2023
- 5 | Report of Social Inclusion Community Activation Programme (SICAP)
- 6 | Local Economic and Community Plan 2016-2021
- 7 | LEADER
- 8 | Local Community Development Committee Funding 2023
- 9 | Healthy Ireland
- 10 | Sláintecare Healthy Communities (SHC)

## Appendices

### **Appendix 1**

Membership of South Dublin County Local Community Development Committee and attendance for 2023

### **Appendix 2**

Community Support Fund 2023

### **Glossary**

# 1 | Foreword

by Local Community Development Committee Chairperson Tricia Nolan

2023 was a busy year for the LCDC in South Dublin with large pieces of work driven by the LCDC during the year including work on the new LECP, managing the tender process for the awarding of the SICAP program and the management and oversight of several grant schemes.

Our Annual Report 2023 demonstrates the extent to which we continue to maintain our commitment as an LCDC to local and community development in the face of emergent challenges and new opportunities.

The LCDC has a major oversight role in **the** disbursement of funding in South Dublin County. We do not take this responsibility lightly and strive to observe the best principles of good governance in all our decision-making. The LCDC funding subcommittee directly administered the Community Support Fund. This was aimed at community groups who required support in paying utility and rent bills, maintenance and upgrade costs and equipment alongside Capital projects. We worked diligently to ensure that we could deliver much-needed support to a wide range of community groups and directed others to appropriate funding channels when we could not meet their needs. South Dublin County Council also disbursed funds under the Community Recognition Fund which supported the development of community infrastructure and facilities for the entire community in recognition of the contribution being made by communities across the country in welcoming and hosting significant numbers of arrivals from Ukraine and other countries.

The LCDC is also responsible for creating the community dimension of the Local Economic and Community Plan. A steering group, set up by South Dublin County Council, oversees the creation of the plan, and that group met several times in 2023. A number of wider consultations took place in 2023 including a large in-person community and business consultation. The LCDC also met in person on several occasions with the consultants responsible for drafting the plan. During the year, we finalised the high-level goals for the LECP and began the work of drafting objectives and actions for the plan with a view to having a final plan in place that will come into force in 2024.

During 2023, the SICAP oversight committee oversaw the tendering process and the awarding of the SICAP 2024-2028 program. Congratulations to South Dublin County Partnership who were the successful tendering party.

Our meetings in 2023 were greatly enhanced by the opportunity to hear presentations from a range of people which provided insight into programmes in operation in the county, policy and planning frameworks and service provision on the ground. These included: The Sláintecare programme; South Dublin County Partnership; Connect 4, Tallaght Drug and Alcohol Task Force, Comhairle na n-Óg and the Community Climate Action Fund. We are very grateful to all of those who gave their time to brief us on the important work in which they are involved.

A number of colleagues left the LCDC in 2023. We thank them for their service and commitment to the goals of community development and inclusion and we welcome new members to our committee. We are grateful that because of the commitment and efforts of all of our members and partner organisations, we continued to fulfil our function throughout the year of 2023. Thank you to all of those who gave their time professionally and in a voluntary capacity to ensure that was the case.

A particular thanks to Prof. Mary Corcoran who retired as Chairperson in 2023. Mary skilfully guided the LCDC over the last number of years through very turbulent times with patience, wisdom and dedication and we will miss you. Thank you, Mary!

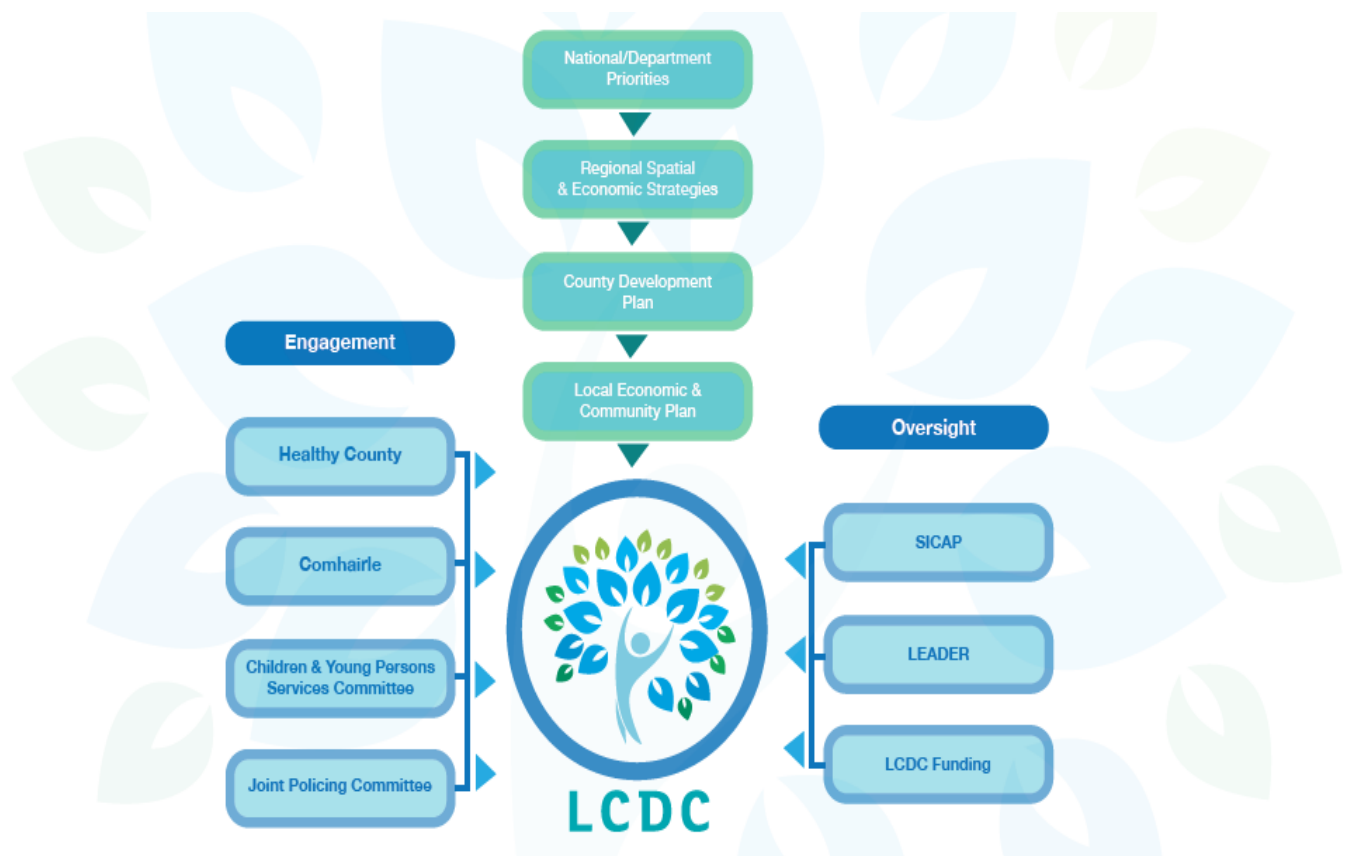
And finally - a particular thanks to the staff of the SDCC who support our committee's work.

## 2 | Members of the LCDC 2023

Representative	Sector
<b>Private</b>	
Larry O'Neill	South Dublin County Partnership
Tricia Nolan	PPN Community Pillar
Enda Creegan	PPN Community Pillar
Justin Byrne	PPN Environment Pillar
Noreen Byrne	PPN Social Inclusion Pillar
Andy Leeson	Youth Services
Professor Mary Corcoran	Maynooth University
Dr. Noel McCarthy	TCD
Dr. Phil Mulvaney	TUD
<b>Public</b>	
Cllr Kieran Mahon	Elected Members
Cllr Alan Hayes	
Cllr David McManus	
Margaret McQuillan	Health Service Executive
Valerie Hogg	Dublin Dun Laoghaire Education & Training Board
Eugene Donnelly	Department of Social Welfare
Thomas Rooney	Local Economic Office
Elaine Leech	A/Director of Housing, Social and Community Development, SDCC
Colm Ward	Director of Housing, Social and Community Development, SDCC
Maria Nugent	Chief Officer, SDCC
Edel Clancy	Senior Executive Officer, SDCC

### 3 | Membership and Organisational Structure

#### Membership and Organisational Structure of the South Dublin County LCDC



The membership of the South County Dublin LCDC is drawn from community representatives, state agencies and local authority elected members. The membership of the LCDC and attendance at meetings is set out in Appendix 1.

The following members left the LCDC in 2023. The Committee express sincere thanks to them for their valuable contributions during their membership:

- Prof. Mary Corcoran
- Tony Fegan
- Justin Byrne

## Role and Function of South Dublin County LCDC

---

The role and functions of the South Dublin County LCDC accordingly, and in accordance with the functions detailed in the Act, the LCDC will: have primary responsibility for co-ordination, planning and oversight of local development spend, whether that spend is delivered by local authorities or on behalf of the State or by other local development agencies and structures;

LCDC's will bring a more coherent approach to the implementation of local and community development programmes and interventions, seeking to ensure an integrated approach to local community and local development services between providers and delivery structures; LCDC's will drive meaningful citizen and community engagement in the scoping, planning, delivery and evaluation of local and community development programmes.

- LCDC's will ensure a more efficient administration of local and community programmes and delivery structures, the appropriate matching of resources to priorities and the achievement of value-for-money in the delivery and governance of programmes and the management of local delivery arrangements.
- LCDC's will develop approaches that focus on learning and feedback, enhancing the links between practice and policy development, and
- LCDC's will explore and pursue opportunities for additional funding resources for the area, whether Exchequer, EU, private or other sources.

Section 128B of the Local Government Act 2001 (inserted by Section 36 of the 2014 Act) sets out the functions of LCDCs. These functions are –

- To prepare the community elements of a 6-year Local Economic and Community Plan.
- To implement or arrange for the implementation of the community elements of the Plan.
- To review the community elements of the Plan at least once within the period of 6 calendar years and if necessary, to amend the community elements of the Plan.
- To monitor and review on an on-going basis the implementation of the community elements of the Plan and, if appropriate, to revise the actions and strategies set.
- To achieve the objectives of the community elements of the Plan,
- To co-ordinate, manage and oversee the implementation of local and community development programmes that have been approved either by the relevant local authority or by agreement between the LCDC and a relevant public authority (e.g., Government Department, State agency)
- To seek to ensure effectiveness, consistency, co-ordination and avoidance of duplication between public funded local and community development programmes, in addition to public funded programmes, to pursue the co-ordination generally of all local and community development programmes within the functional area of the Committee,
- To consider and adopt a statement for consideration of the Council in respect of the economic elements of a draft of the Plan prepared by the local authority,
- To prepare an annual report on the performance of its functions.

## 4 | Report of LCDC Meetings in 2023

There were six meetings of the LCDC in 2023.

### ■ LCDC Meetings:

---

- 8<sup>th</sup> February 2023
- 19<sup>th</sup> April 2023
- 14<sup>th</sup> June 2023
- 20<sup>th</sup> September 2023
- 8<sup>th</sup> November 2023
- 6<sup>th</sup> December 2023

Meetings in 2023 covered a range of issues including the following:

- Sláintecare
- Healthy Ireland
- Comhairle na nÓg
- Climate Action
- Local Economic & Community Plan (LECP)
- Connect 4

### ■ SICAP

---

The following reports were presented to the LCDC in 2023:

- 2023 Annual Progress Report
- SICAP 2023 Mid-Year Review
- SICAP: Case Study – Connect 4 Pilot Project.
- 2023 SICAP Annual Plan
- Internal Audit Report: SICAP 2022

### ■ Funding

---

- Funding Updates
- Community Support Fund
- Sláintecare Healthy Communities Programme Funding
- Healthy Ireland Programme Funding
- Community Recognition Funding

## ■ Local Economic & Community Plan (LECP)

---

- The purpose of the LECP, as provided for in the Local Government Reform Act 2014, is to set out, for a six-year period, the objectives and actions needed to promote and support the economic development and the local and community development of the relevant Local Authority area, both by itself directly and in partnership with other economic and community development stakeholders.
- South Dublin County LCDC engaged KPMG to develop the new Local Economic Community Plan during 2023.
- The preparatory work (stage 1) of the LECP process began.  
Stage 1 Preparation included:
  - Review of LECP 2016 – 2021
  - Socio-economic Analysis
  - Socio-economic Statement
  - Identification of High-level goals, objectives and actions
  - Sign off by SPC for Economic Development and Enterprise and by LCDC.
- A number of public consultations and stakeholder engagements took place which contributed to the development of the Objectives and Actions of the new plan.
- South Dublin County LCDC will continue to work with KPMG to finalise the new LECP in 2024.

## ■ Presentations & Other reports

---

- Sláintecare Presentation
  - Climate Action Plan Presentation
  - Connect 4
  - West Tallaght Virtual Directory
  - Nitrous Oxide Harms video
  - Comhairle nÓg
  - LECP
-

## 5 | Report of SICAP (Social Inclusion Community Activation Programme)

A key responsibility of the South County Dublin LCDC is oversight of the SICAP (Social Inclusion Community Activation Programme). A funding allocation of €2,524,864.00 was received from the Department of Rural & Community Development in 2023.

The current SICAP (2018-2022) contract was tendered in 2017 and the contract was awarded to South Dublin County Partnership (SDCP). 2023 was the final year of the current contract and South Dublin County Partnership (SDCP) has successfully achieved both KPIs included in SICAP contract:

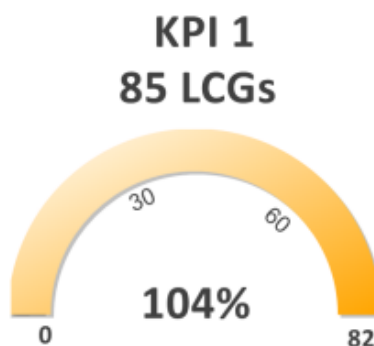
1. Meeting the Annual Targets	Achieved	% Achieved
Achievement of KPI 1 Target 82	85	104%
Achievement of KPI 2 Target 1112	1439	129%
Achievement of % KPI 2 from disadvantaged areas Target 41%	45.14%	45.14%

### SICAP Lot Summary Report: 2023/ South Dublin County (3-1)

#### Lot Summary Report: 2023 / South Dublin County (3-1)

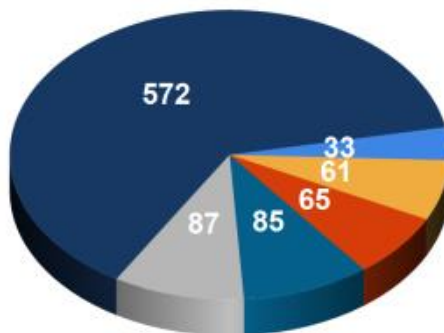


#### Goal 1 - Local Community Groups



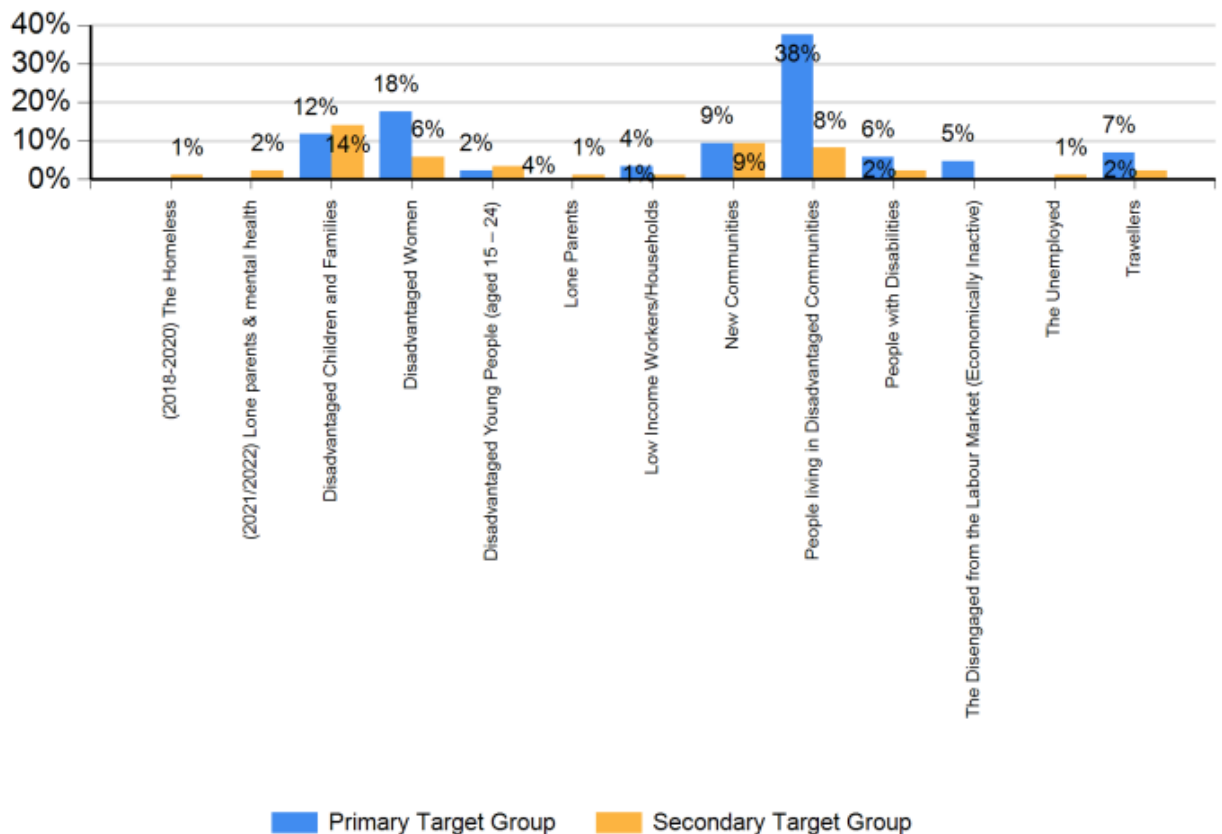
	Lot	National
Newly registered LCGs as % of KPI 1	22%	
Average number of Interventions per LCG	10.62	7.50
Average duration of Intervention	102 mins	87 mins
Number of LCG Grants	0	
Total LCG Grant Amount	€0.00	
Total number of LCG interventions	906	

## Number of LCGs (KPI 1) Interventions by support type



- G1 - 4:1.1 Engagement to co-develop and implement initiatives addressing social exclusion and inequality - 33
- G1 - 1:2.1 Engagement to support social inclusion and equality issues - 61
- G1 - 3:1.1 Engagement to support active participation in decision making structures - 65
- G1 - LCG Annual Action Plan - 85
- G1 - 1:1.1 Engagement to support participation in community planning - 87
- G1 - 2:2.1 Engagement to build LCG capacity - 572

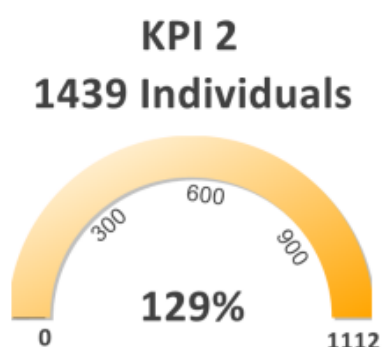
## Percentage of LCGs (KPI 1) by Primary and Secondary Target Group



## Goal 1 - Social Enterprises

Total SE grants:	35 Social Enterprises supported	0 Jobs created
------------------	------------------------------------	-------------------

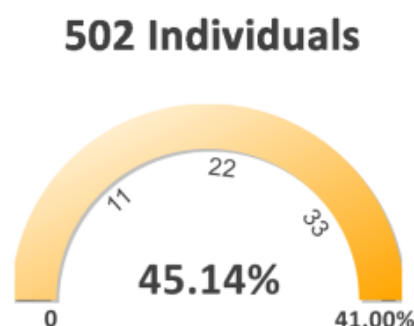
## Goal 2 - Individuals



	Lot	National
Newly registered Individuals as % of KPI 2	80%	
Average no. of Interventions per Individual	3.15	4.03
Average duration of Intervention	56 mins	59 mins
% of Individuals (KPI 2) with SI barriers*	73%	75%
• 1-2 barriers	61.75%	64.40%
• 3-4 barriers	37.48%	32.80%
• 5-6 barriers	0.77%	2.33%
<b>Top two SI barriers</b>		
• Jobless household (761 individuals)		
• Ethnic Minority (451 individuals)		
Number of Individual Grants	0	
Total Individual Grants	€0.00	
• Education Grants	€0.00	
• Enterprise Grants	€0.00	
Total number of Individual Interventions	4,620	
Total number of SICAP funded LLL course placements	1,109	

\*List of barriers: Disability, Ethnic Minority, Homelessness, Jobless household, Lone Parent, Transport

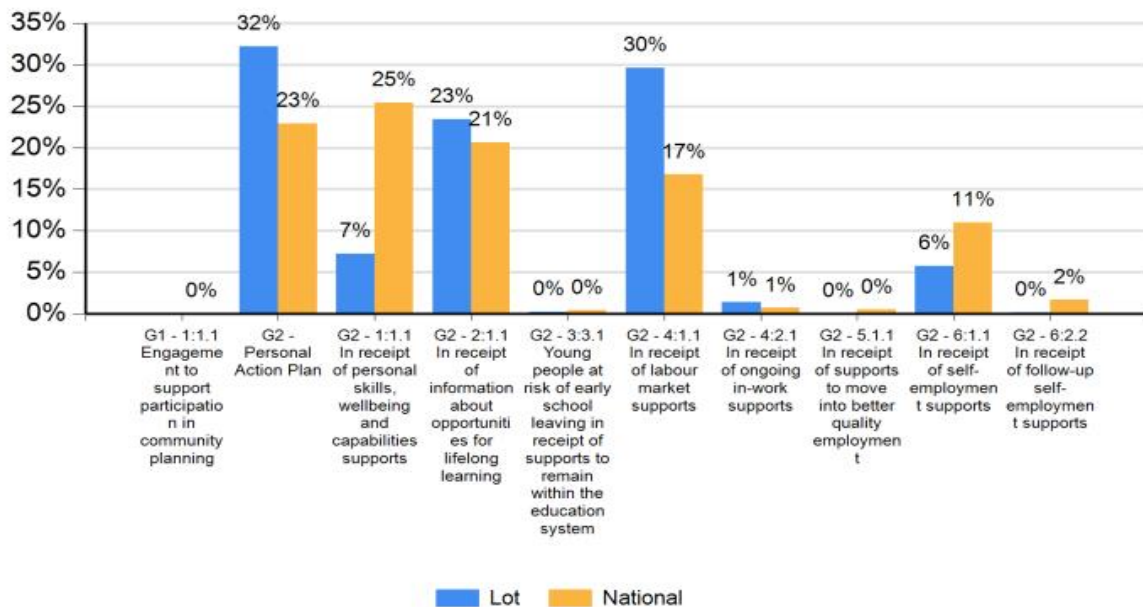
## KPI 2 living in disadvantaged areas by Pobal HP Deprivation range



HP Deprivation Range	No. of Individuals (KPI 2)
Disadvantaged	331
Very disadvantaged	170
Extremely disadvantaged	1
<b>Total disadvantaged</b>	<b>502</b>

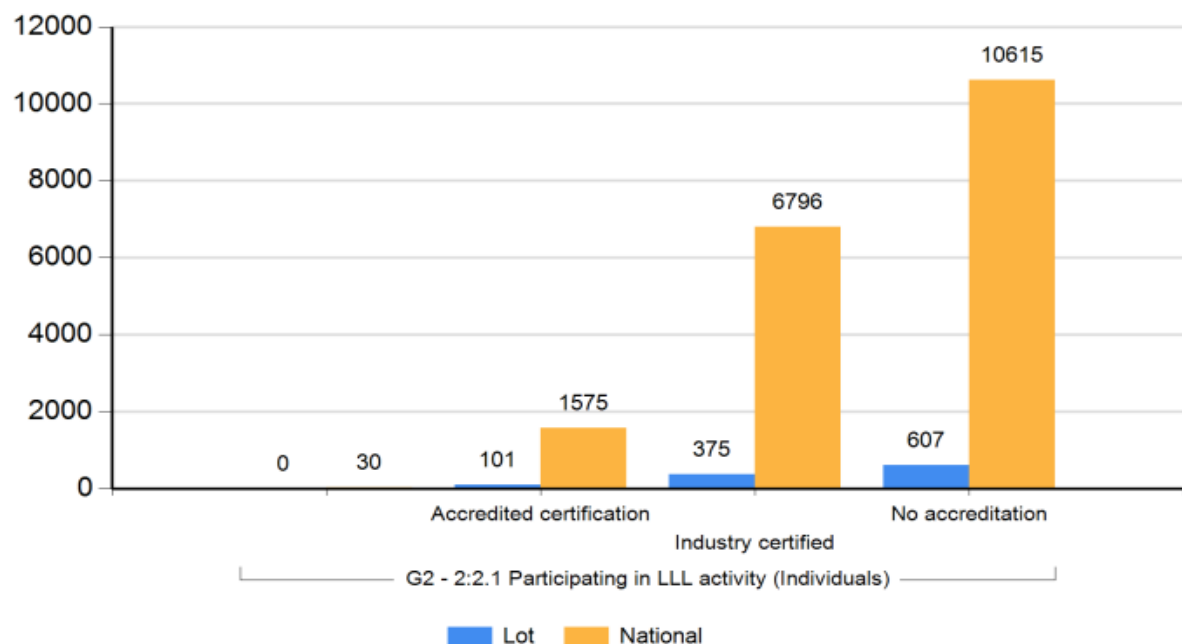
## Lot Summary Report: 2023 / South Dublin County (3-1)

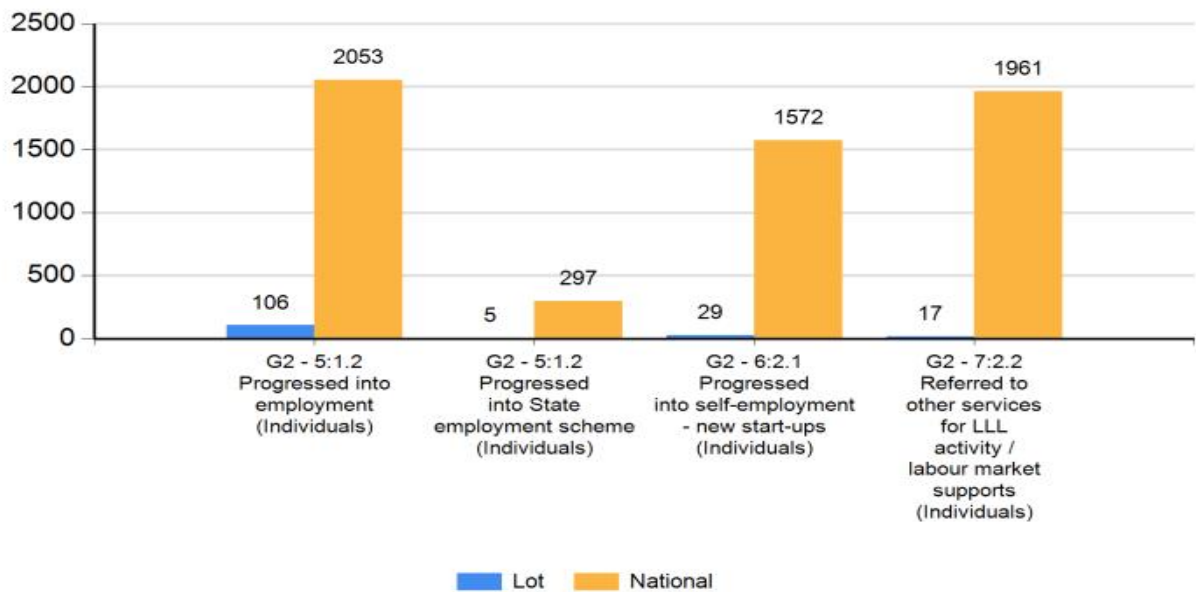
### Breakdown of Individual (KPI 2) Interventions by support type



## Lot Summary Report: 2023 / South Dublin County (3-1)

### Count of Individual by Output indicator





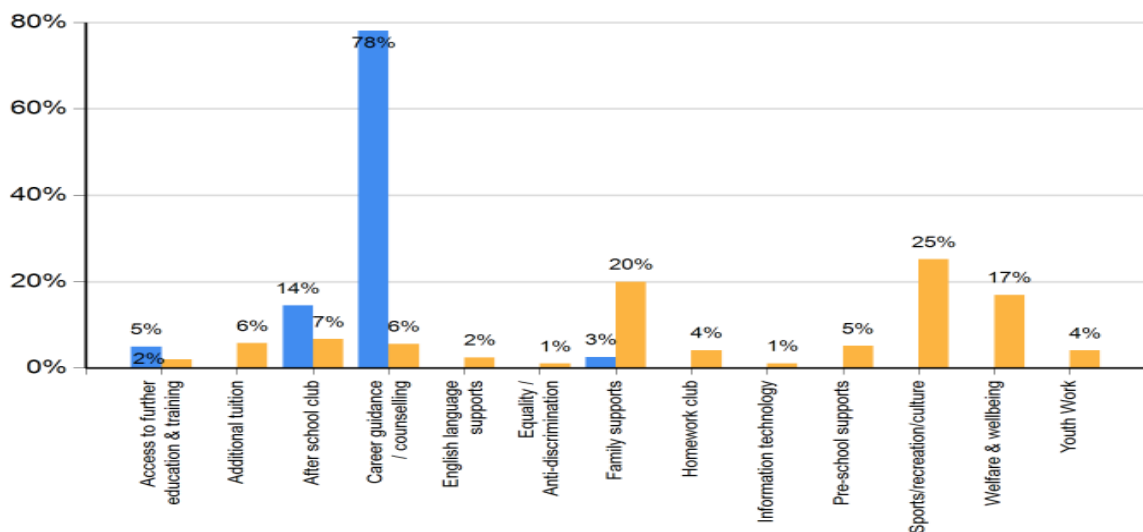
### Lot Summary Report: 2023 / South Dublin County (3-1)



#### Goal 2: Disadvantaged Children and Families

Children: 2432 (48% Female / 52% Male)  
 Parents & guardians: 4 (75 % Female / 25% Male)

#### % of Total Children supported by type of activity



## SICAP Case Study for 2023

In April, 2022, the Connect 4 Project was launched, featuring a team of four street-based youth workers, one of whom serves as the team leader. The project focuses on detached youth work, a distinctive form of outreach that specifically engages the most at risk and marginalized young individuals, aged between 10 and 24 years. The Connect 4 project operates directly on the streets of West Tallaght, Killinarden and Jobstown reaching out to vulnerable youth in their natural environments to provide support and assistance.

In 2023 the SICAP Case Study has focused on the work and success of Connect 4. Please click link below:

[SICAP Case Study 2023 Connect 4 Project \(youtube.com\)](https://www.youtube.com/watch?v=...)

### Key Performance Indicators

The following table sets out the key performance indicators, emerging needs and case studies for SICAP 2019-2022

	South Dublin County (Lot 3-1)				
Area	2019	2020	2021	2022	2023
KPI 1	101	85	85	85	85
KPI 2	1583	894	1,144	1389	1439
Emerging Needs	The Homeless	The Homeless with an increased focus on Roma Homeless	Lone parents and mental health	Support Local Community Groups and support individuals	Assisting vulnerable youth in West Tallaght and providing them with assistance and support
Target Group					
Case Study	Goal 2:  "4 the Family"	Goal 1 & 2:  South Dublin County Community Call – SICAP Case Study	Goal 2  South Dublin County Partnership to Lone Parents in 2021 with particular focus on the rise of mental health responses following Covid-19	Goal 1 & 2  Preparing people for employment & Better Quality, Sustainable Employment	Goal 1  The Connect 4 project operates directly on the streets of West Tallaght, Killinarden and Jobstown reaching out to vulnerable youth in their natural environments to provide support and assistance to them.

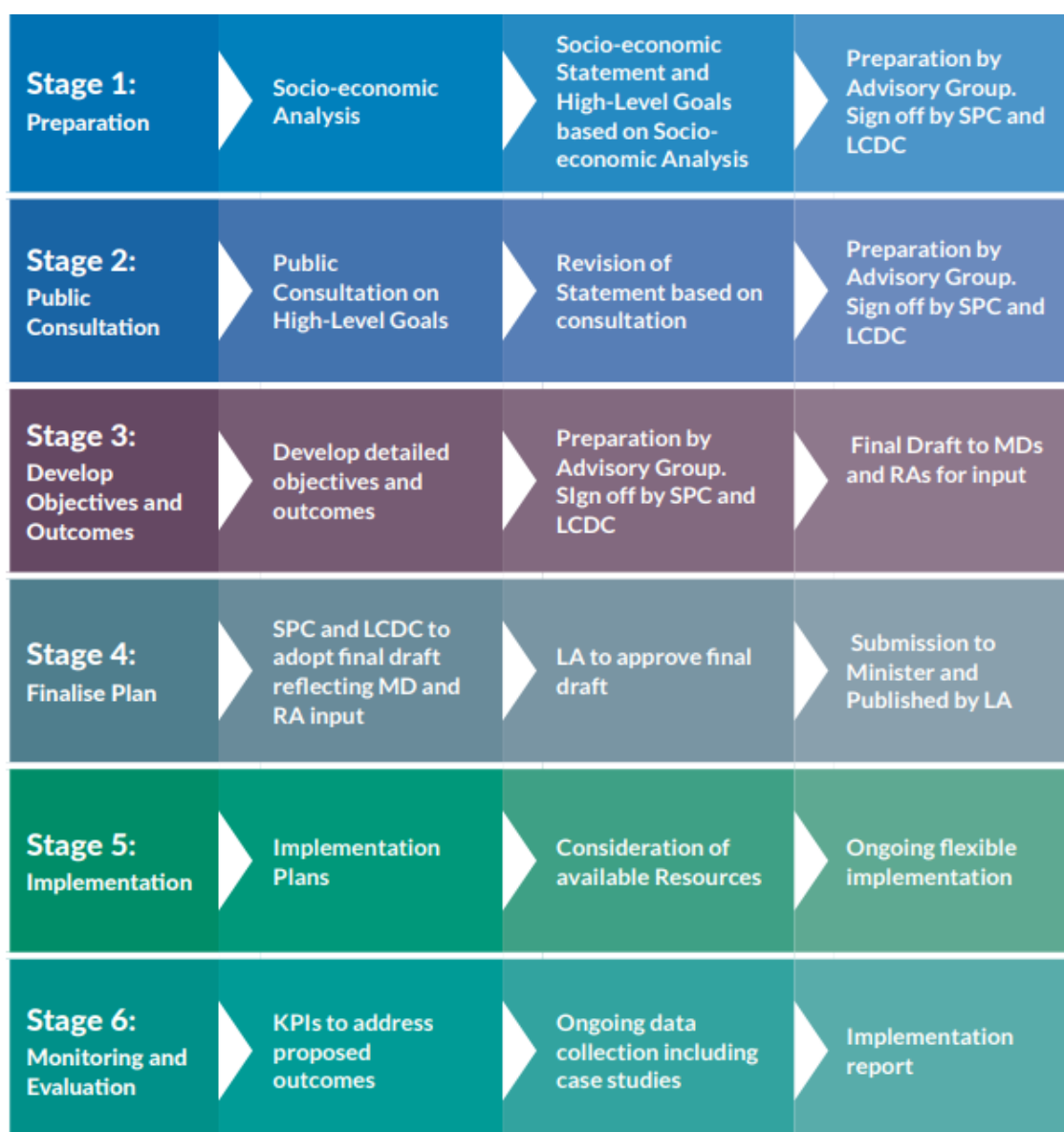
## 6 | Local Economic and Community Plan

Local Economic and Community Plans (LECP) support the sustainable development of our counties. First described in *Putting People First: Action Plan for Effective Local Government* and then formalised in the Local Government Reform Act 2014, they form the local element of the national development framework and support collaboration to increase the quality of life in our communities. This has never been more important as we look to support a sustainable recovery from the impact of the pandemic.

The primary aim of the LECP is to set out, for a six-year period, the objectives and actions needed to promote and support the economic development and the local and community development of the relevant local authority area, both by the Local Authority directly and in partnership with other economic and community development stakeholders. The LECP is an important way to set out how Government and other stakeholders can work together to ensure that their initiatives, programmes and projects support an improved quality of life for people living and working in the county.

In Nov 2021 New Guidelines for the next LECP were launched and these guidelines can be found here:

[gov.ie](http://gov.ie) - [Guidelines on Local Economic and Community Plans \(www.gov.ie\)](http://gov.ie)



South Dublin County LCDC have established an Advisory Group to lead the development of the new LECP alongside KPMG.

Multiple community and business stakeholder engagements took place during 2023 including a workshop with Dun Laoghaire Rathdown LCDC on Inclusive Engagement in Planning and Decision Making.



## 7 | LEADER Programme



Dublin Rural  
**LEADER**  
Growth, Sustainability & Inclusion

LEADER covers the rural areas of South Dublin County (the electoral districts (EDs)) of Newcastle, Rathcoole, Saggart, Ballinascorney and Bohernabreena. Following the agreement between South Dublin County Council, Fingal County Council and Dún Laoghaire-Rathdown County Council, 5 members of the LCDC were selected to sit on the Rural Dublin Local Action Group for this round of LEADER Rural Development funding.

### The 5 members are:

- Elaine Leech, SDCC
- Andy Leeson, Foróige
- Fionnghuala Ryan, SDCC
- Cllr David McManus
- PPN Representative (Vacancy)

LAG Evaluation Committee: This committee evaluates recommendations for funding from the Programme implementer and then makes recommendations to the LAG. Membership is drawn from the three counties.

# LCDC Funding 2023

## Social Inclusion Community Activity Programme (SICAP)

South Dublin County received an allocation of €2,451,864.00 in relation to SICAP in 2023 and €481,646 funding towards New Arrivals. South Dublin County Partnership reports regularly to the LCDC.

## Community Support Fund under the Community Enhancement Programme

The Department of Rural and Community Development (DRCD) provided funding under Community Support Fund (CSF), Community Enhancement Programme which supported community groups across Ireland.

South Dublin County Council was allocated funding in the sum of €409,835 during 2023 which was broken down as follows:

- €200,819 Current funding (non-Pay) for use towards running/operating costs.
- €204,917 Capital funding for use towards carrying out necessary repairs and improvements to facilities, energy efficiency type projects, purchase of equipment etc.
- €4,098 ringfenced for Women's Sheds.

109 Community Support Fund Applications were received.

Following examination and assessment of all applications received by the Community Department Staff and LCDC Funding subcommittee 57 Applications have been recommended for funding.

Priority was given to support energy bills, insurance costs, IT equipment, equipment upgrades etc. Rent, Professional/Affiliation Fees and Bank Costs were not considered for funding.

A full list of grants awarded are listed in Appendix 2.

## 9 | Healthy Ireland



Healthy Ireland Round 4 launched in 2022. The project is managed by South Dublin County Council in partnership with the HSE. A Healthy South Dublin County Co-ordinator commenced working on the 3-year Healthy Ireland Fund Local Strategy began in October 2022.

Healthy Ireland is a government led initiative aimed at improving the health and wellbeing of everyone living in Ireland.

### 4 Key Goals

1. Increase the proportion of people who are healthy at all stages of life.
2. Reduce health inequalities.
3. Protect the public from threats to health and wellbeing.
4. Create an environment where every individual and sector of society can play their part in achieving a Healthy Ireland.

### What is new for Health Ireland Fund (HIF) 2023 – 2025

- All LA's have a Healthy City/County Coordinator
- Introduction to an outcome led approach.
- Prioritise project outcomes based on local data, needs and in collaboration with local stakeholders.
- A behavioural science approach to underpin the identification of appropriate activities.
- An annual activities workplan to be used as a planning tool for project planning and implementation.
- Approved for €75,000 per annum for 2023. €40,000 for 2024 & 2025
- The 3-year Healthy Ireland Fund Local Strategy, online application, annual activities workplan 2023 and supporting documentation to be submitted by 3pm on 27th January 2023

#### An Outcomes Approach

**Outcomes Approach:** Showing the difference made

**Evidence base** will be used for rationale: Why this is important?

**High level HI Outcome:** Project level outcomes– Project level outputs

**Behaviour science** approach introduction to Health Outcomes



#### The Behaviour Science Approach



The **COM-B model of behaviour change** helps us understand what drives **behaviour** so we can identify how we can change it. It identifies three factors for any **behaviour** to occur: Capability, Opportunity and Motivation.

#### Capability

Whether we have the knowledge, skills and abilities required to engage in a particular **behaviour**

E.g. I'm aware of the harmful effects of smoking on my health

#### Opportunity

The external factors which make carrying out the **behaviour** possible

E.g. I have access to the necessary supports to help me quit smoking

#### Motivation

The internal processes which influence our decision making and **behaviours**

E.g. I want to stop smoking to improve my health

Local Authorities must select a minimum of 1 or maximum of 2 of the 27 listed outcome indicators

Outcome Indicator for Selection	
Lifestyle & Behaviour Risk Outcome Area	
<ul style="list-style-type: none"> <li>• Decrease in no. of adults who are overweight or obese</li> <li>• Increase in % of adults &amp; children meeting physical activity guidelines</li> <li>• Decrease in proportion of people who smoke daily/occasionally</li> <li>• Decrease in prevalence of age standardised heavy episodic drinking</li> <li>• Increase in breastfeeding % rates at first PHN visit and at 3 month followup</li> <li>• Increase in % of young people (15-17 &amp; 17-24) reporting ever having sex and condom use on last occasion of sex</li> <li>• Decrease in % of students (age 15) using internet 6 hrs + per day outside school, on school days</li> </ul>	
Mortality & Morbidity Outcome Area	
<ul style="list-style-type: none"> <li>• Increase in average no. of remaining years that persons of a certain age can expect to live without disability</li> <li>• Decrease in unconditional probability of dying (aged 30-70) from cardiovascular diseases, cancer, diabetes or chronic respiratory disease</li> <li>• Decrease in total cancer incidence/incidence of most important cancers, per 100k of population in given year</li> </ul>	
Wellbeing Factors Outcome Area	
<ul style="list-style-type: none"> <li>• Increase in % of persons assessing health to be very good/good as per EU-SILC questionnaire</li> <li>• Increase in individual's level of positive mental health as per Energy and Vitality Index</li> <li>• Decrease in no. of people showing negative mental health as per Mental Health Index-5 over past 4 weeks</li> <li>• Decrease in % of people aged 50+ with moderate/severe levels of depression</li> <li>• Increase in % of people aged 50+ engaging in one or more social leisure activity at least once a week</li> <li>• Increase in % of people aged 50+ who feel safe to walk alone after dark in their locality</li> <li>• Increase in % of 11-17-year-olds who feel safe (always/most of the time) in the area where they live</li> </ul>	
Environmental Factors Outcome Area	
<ul style="list-style-type: none"> <li>• Decrease in measure of target/limit values in Air Quality Index as per EC legislation</li> <li>• Improvement in the measure of drinking water quality</li> <li>• Decrease in no. of homes above National Reference Level for Radon</li> </ul>	
Socio-Economic Factors Outcome Area	
<ul style="list-style-type: none"> <li>• Decrease in mid-year no. of long-term unemployed in people aged 15-74</li> <li>• Decrease in proportion of persons aged 18-59 in a household where no member of the household is working</li> <li>• Decrease in % of schools/school clusters/communities with concentrated levels of educational disadvantage</li> <li>• Increase in % of those attaining different levels of education as per NFQ Framework</li> <li>• Increase in literacy &amp; numeracy scores for adults and based on OECD-PISA Scientific Literacy Scale</li> <li>• Decrease in % of those at risk of poverty &amp; basic deprivation</li> <li>• Decrease in income inequality</li> </ul>	

# Target Groups

Adolescents & Young People (Aged 15-24)	Traveller Communities
Asylum Seekers, Refugees & Migrants	People living in disadvantaged communities
Children (Aged up to 14)	People with Chronic Illness
Disadvantaged Families including one parent families	People with Disabilities
Disadvantaged Men and Women	People with Mental Health Issues
General Population	People with Substance Use Disorders
LGBTI+ Community	Roma Communities
Older People (Aged 65+)	The Unemployed
People affected by homelessness or at risk of homelessness	

## Healthy Ireland Funding - Ukraine Response

South Dublin County Council through Healthy Ireland funding of €66,675 supported new and/or augment existing social inclusion programmes or Ukrainian refugees in the County during 2023.

“The purpose of the Programme was to promote the health and wellbeing of Ukrainian Refugees who have sought protection in Ireland, as part of the international humanitarian crisis arising from the war in Ukraine.”

South Dublin County Council worked in collaboration with South Dublin County Partnership, South Dublin County Volunteer Centre to deliver on the following three key theme:

### **Cultural Health & Wellbeing**

South Dublin County Volunteer Centre:

- Additional activities for physical activity, health, music and art.
- Art therapy for adults
- Transit hub - A children's play area established.
- Upskilling/ Training courses for hotel facilitators.

### **Older People & Medically Vulnerable**

South Dublin County Partnership;

- Sensory Rooms in each hotel that has accommodated new arrivals where needed.
- Art Therapy for adults with disabilities/ medically vulnerable
- Link in with Tusla and other agencies to provide services required.

### **Outdoor & Social Integration**

South Dublin County Council

- Sensory Cinema Viewings
- Sensory Horse Riding
- Sensory toys for sensory rooms
- Inclusive Summer Camps
- Excursions- Tayto Park, Zoo, Hill Walking, Zip It, Jump Zone, Clara Lara, Indoor rock climbing, Avon Ri, Russborough House, Fort Lucan

- Adult Excursions- Rathfarnham Castle, Glendalough, Bohernabreena, Cinema Deals
- Transport for excursions
- Passes for leisure centres- People with disability membership
- Tallaght Youth Service to be set up in Citywest Hotel

### **Generation Connections**

- Healthy Ireland and SHCP Tallaght applied for the Community Safety Innovation Fund 2023 to support the Generations Connection MacUilliam project. The application was successful and a total of €98,460 has been awarded to the project.
- €36,000 has been allocated to Tallaght Community Arts for their Creative Places 'Lighting up our Streets' element of the project.
- €3,000 contribution from the 'Health and Wellbeing' aspect of the fund has been given to Barnardo's Lorien to fund comedy workshops for the young people of MacUilliam.
- New street lighting will be installed in MacUilliam estate with works to commence in Q2 of 2024.



## **10 | Sláintecare Healthy Communities (SHC)**

**Sláintecare Healthy Communities (SHC)** is a multi-component interagency programme that is designed to meet the needs of a number of designated community areas across the country. It focusses on bringing about real, measurable change, based on an understanding of the determinants of health and evidence-based health and wellbeing programmes. Sláintecare Healthy Communities is led by Healthy Ireland in the Department of Health. The Department commissioned Local Authorities, the HSE and a wide range of community-based organisations to work together and deliver a range of health and wellbeing initiatives in targeted community areas and to integrate a health and wellbeing approach into the work of local authorities. Government funding of over €10 million has gone into the development and delivery of the overall programme.

### **Key messages about Sláintecare Healthy Communities:**

- Partnership working across government, public services and interagency working at local level for community wellbeing.
- Addressing health inequalities by taking a targeted approach.
- All population health outcomes can be linked to people's social reality and lifestyle behaviours and SHC is working to address both.
- Evidenced based health and wellbeing programmes integrated with social determinants approach supported by local authorities.
- Enhancement Fund will enhance the community environment for health and wellbeing, examples include greenspaces, improved community facilities and walking and cycling tracks.

- Numerous HSE Health and Wellbeing components to be delivered locally such as Healthy Food Made Easy, Social Prescribing, We Can Quit, Community Food and Nutrition Worker, Making Every Contact Count.
- New staff working in collaboration to address Healthy Ireland where support is needed the most.

The LCDC received significant funding towards the initiation of a major Sláintecare Healthy Communities Project in South County Dublin. Funding has been provided for two CHO areas with the recruitment of 2 Sláintecare Local Development officers. The Local Development Officers work very much in partnership with SDCC's Community Development team, Healthy Ireland Coordinator, Sports Officers, Active Cities and Active Travel officers within SDCC to promote health and wellbeing in key areas of the county.

The ultimate goal of the Sláintecare Healthy Communities Programme is to improve the long-term health of target populations and improve the quality of life of individuals in those communities. This is to be achieved through the delivery of a suite of targeted health and well-being initiatives, alongside additional support provided by South Dublin County Council and the HSE.

Below is an overview of a project coordinated by the Sláintecare Healthy Communities team at South Dublin County Council. The work has been supported by HSE Health Promotion Officers and with the support of local community organisations through established Sláintecare Local Implementation Groups.

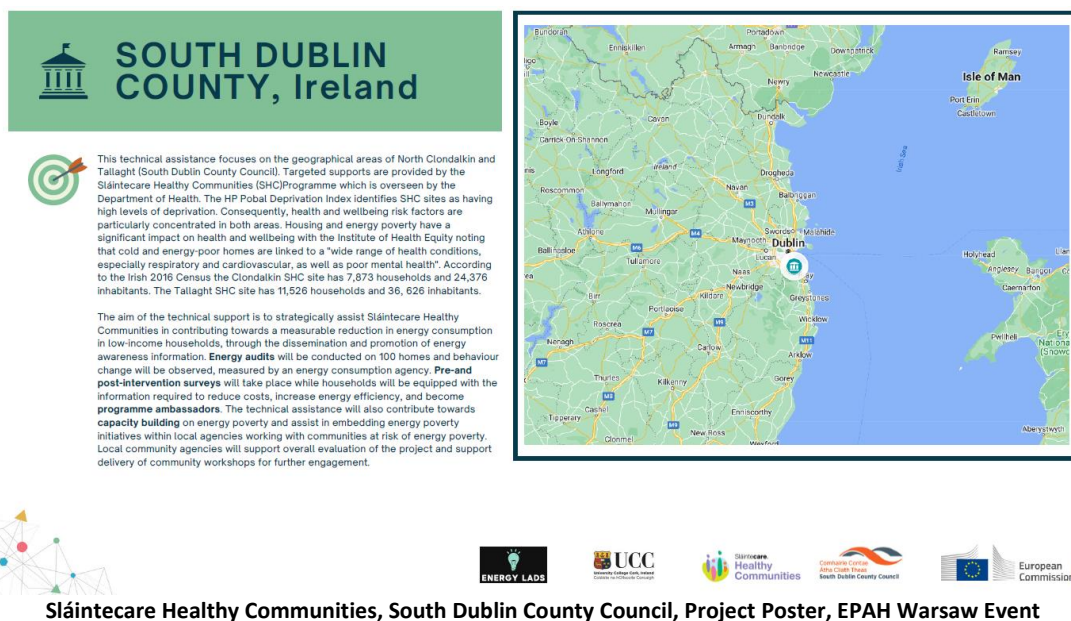
### **Sláintecare Energy Use in the Home – Tackling Energy Poverty within Sláintecare Healthy Community sites**

Sláintecare Healthy Communities South Dublin is leading the delivery of a bespoke pilot programme exploring the link between energy poverty and health in Tallaght and Clondalkin. The relationship between energy poverty and health and well-being is significant. Chronic health conditions can contribute to increased energy consumption and higher costs while experiencing energy poverty can contribute to poorer health outcomes. Energy Poverty occurs when a household has difficulty adequately heating the home, managing energy bills, and meeting household energy needs. The initial pilot consists of fifty households.



**Sláintecare Energy Use in the Home, Stakeholder Workshop during Project Design Phase, bringing together various South Dublin County Council departments, EPAH Technical Expertise, Community representatives and the Household Energy Contractor**

The Sláintecare Healthy Communities team at South Dublin County Council were successful in applying to the European Union, Energy Poverty Advisory Hub (EPAH) technical assistance initiative. This scheme provides technical assistance to selected European local authorities which have committed concrete actions to tackling energy poverty. Professor Niall Dunphy (University College Cork) has been assigned to support the design and delivery of this project and has engaged with South Dublin County Council and community stakeholders, drawing on his experience in tackling energy poverty in areas with disadvantage, to ensure best practice throughout this process. South Dublin County Council is the only Irish local authority represented on this European initiative, and Sláintecare staff have shared findings with a European network of local authorities at events in Warsaw and Brussels.



The Sláintecare Healthy Communities pilot project involves multiple household visits by energy consumption experts, EnergyLads, that provide tailored advice to participating households, based on the unique energy needs of each household. Practical supports are also provided, to ensure that participants are equipped with both the items and information required to implement bespoke recommendations. It is expected that all household visits will be completed by the end of 2024, with a full report by Quarter 1, 2025.



Sláintecare Healthy Communities 'Energy Use in the Home' – Recruitment Materials

## Sláintecare Projects – 2023

- Outdoor Callisthenic Equipment and Play Space Upgrades, Clondalkin Park
- Outdoor Callisthenic Equipment, Balgaddy
- Black Lane Upgrades, Neilstown, Clondalkin
- Active Families – Funding provided to South Dublin County Partnership to appoint a Food and Community Nutritionist
- Period poverty initiative
- Trim Trail, MacUilliam Estate
- Adult changing room, St Aengus Community Centre – to be completed in 2024
- Resilience programme Brookfield Community Centre
- Connect 4 marquee to assist with detached youth street work



Sláintecare.  
Healthy  
Communities

### Clondalkin SHC Catchment Area



Cappaghmore,  
Rowlagh,  
Dunawley,  
Moorfield



Comhairle Contae  
Átha Cliath Theas



Sláintecare.  
Healthy  
Communities

### Tallaght SHC Catchment Area



Fettercairn,  
Killinardan,  
Tymon,  
Avonbeg,  
Jobstown



Comhairle Contae  
Átha Cliath Theas

South Dublin County Council



# Appendices

## Appendix 1

### South Dublin County LCDC membership and attendance 2023

Representative	Sector	February 2023	April 2023	June 2023	September 2023	November 2023	December 2023
<b>Private</b>							
Mary Corcoran	Community	P	P	P	R	R	R
Phil Mulvaney	Community	P	P	P	A	P	P
Larry O'Neill	SDC Partnership	P	P	P	P	P	P
Tricia Nolan	PPN Community Pillar	P	P	P	P	P	P
Enda Creegan	PPN Community Pillar	A	A	A	A	A	A
Justin Byrne	PPN Environment Pillar	P	A	A	R	R	R
Noreen Byrne	PPN Social Inclusion Pillar	A	A	P	P	A	A
Andy Leeson	Youth Services	P	P	P	P	P	P
Dr. Noel McCarthy	TCD	P	P	P	P	P	P
<b>Public</b>							
Cllr Kieran Mahon	Councillor	P	P	P	P	A	P
Cllr Alan Hayes	Councillor	P	A	P	P	A	A
Cllr David McManus	Councillor	A	A	A	P	P	A
Margaret McQuillan	HSE	A	P	A	P	A	A
Valerie Hogg	DDLETB	P	A	P	P	A	P
Eugene Donnelly	DSP	A	A	P	P	P	P
Thomas Rooney	LEO	A	A	P	P	A	A
Colm Ward	SDCC	P	P				
Elaine Leech	SDCC			P	P	P	P
<b>In Attendance</b>							
Maria Nugent	SDCC	P	P	P	P	P	P

**P- Present**

**A- Apologies given**

**C- Absent conflict of interest.**



# Appendices

## Appendix 2

### 2023 LCDC Funding Allocations:

#### Community Support Fund

#### Community Support Fund

LCDC	Group/Organisation	Amount Awarded	Electoral Area
South Dublin	ACE Enterprise Park	€20,000.00	Clondalkin
South Dublin	Archways	€7,000.00	Clondalkin
South Dublin	Bawnogue Youth and Community Centre	€10,205.00	Clondalkin
South Dublin	CARP Killinarden Ltd	€3,480.00	Tallaght South
South Dublin	CARP Killinarden Ltd	€3,580.00	Tallaght South
South Dublin	Citywise Education	€11,350.00	Tallaght South
South Dublin	Clondalkin Addiction Support Programme	€14,100.00	Clondalkin
South Dublin	Clondalkin Addiction Support Programme	€6,100.00	Fonthill/Palmerstown
South Dublin	Clondalkin Adult Morning Education (CAME)	€1,979.87	Fonthill/Palmerstown
South Dublin	Clondalkin Autism Parents Support Network - (CAPS Network)	€3,871.97	Clondalkin
South Dublin	Clondalkin Centre for the Unemployed CLG T/a CEEDS	€24,439.77	Fonthill/Palmerstown
South Dublin	Clondalkin Equine Club	€9,030.64	Fonthill/Palmerstown
South Dublin	Clondalkin Women's Network	€310.00	Clondalkin
South Dublin	Dominic's Active Men's Social	€1,000.00	Tallaght Central
South Dublin	Fettercairn Community and Youth Centre	€3,418.43	Tallaght South
South Dublin	Fettercairn Community Enterprise Company Ltd.	€5,625.00	Tallaght South
South Dublin	Fettercairn Youth Horse Project	€17,000.00	Tallaght South



<b>South Dublin</b>	Fettercairn Youth Horse Project	€3,400.00	Tallaght South
<b>South Dublin</b>	Jadd Project Ltd.	€19,295.00	Tallaght South
<b>South Dublin</b>	Killinarden Community Council	€25,000.00	Tallaght South
<b>South Dublin</b>	Killinarden Family Resource Centre	€2,375.63	Tallaght South
<b>South Dublin</b>	Killinarden Family Resource Centre	€5,667.01	Tallaght South
<b>South Dublin</b>	Kilnamanagh Family Recreation Centre	€2,000.00	Tallaght Central
<b>South Dublin</b>	Kingswood Community and Leisure Centre	€6,180.00	Tallaght Central
<b>South Dublin</b>	Knockmitten Youth and Community Centre	€5,350.00	Clondalkin
<b>South Dublin</b>	Muintir Chrónáin, Áras Chrónáin Ionad Cultúir	€22,685.00	Clondalkin
<b>South Dublin</b>	Neart le Chéile - Cumas agus Cairdeas	€9,000.00	Fonthill/Palmerstown
<b>South Dublin</b>	Neilstown Community Centre	€6,497.24	Fonthill/Palmerstown
<b>South Dublin</b>	New Hope Residential Centre	€6,500.00	Tallaght South
<b>South Dublin</b>	North Clondalkin Community Safety Programme	€3,597.95	Fonthill/Palmerstown
<b>South Dublin</b>	North Clondalkin Community Safety Programme	€1,854.30	Fonthill/Palmerstown
<b>South Dublin</b>	Pink Fabulous Rainbow	€2,540.00	Fonthill/Palmerstown
<b>South Dublin</b>	Quarryvale Community and Leisure Centre	€11,845.61	Fonthill/Palmerstown
<b>South Dublin</b>	Quarryvale Family Resource Centre	€14,624.59	Fonthill/Palmerstown
<b>South Dublin</b>	Rathcoole Community Council Ltd.	€7,173.35	Clondalkin
<b>South Dublin</b>	ReCreate Ireland	€11,573.65	Rathfarnham/Templeogue
<b>South Dublin</b>	Retired Active Men's Social (RAMs)	€1,000.00	Clondalkin
<b>South Dublin</b>	Ronanstown Community Childcare Centre	€2,116.07	Fonthill/Palmerstown
<b>South Dublin</b>	Ronanstown Women's Community Development Project	€3,041.00	Fonthill/Palmerstown



<b>South Dublin</b>	Rowlagh Women's Group	€1,000.00	Fonthill/Palmerstown
<b>South Dublin</b>	Saggart Village Residents Association	€1,000.00	Clondalkin
<b>South Dublin</b>	Sensory Fun with Friends	€637.82	Tallaght Central
<b>South Dublin</b>	Sister Sheds	€4,098.00	Tallaght South
<b>South Dublin</b>	South Dublin Community Facilities CLG	€12,500.00	Tallaght South
<b>South Dublin</b>	South Dublin County Volunteer Centre	€8,880.00	Tallaght Central
<b>South Dublin</b>	St. Marks Youth Club	€20,137.98	Tallaght South
<b>South Dublin</b>	St Aengus Active Retirement Club	€3,000.00	Tallaght Central
<b>South Dublin</b>	Tallaght Addiction Support Project	€4,328.74	Tallaght South
<b>South Dublin</b>	Tallaght Bridge Club	€445.00	Tallaght Central
<b>South Dublin</b>	Tallaght Rehabilitation Project CLG	€1,436.00	Tallaght South
<b>South Dublin</b>	Tallaght Travellers Youth Service	€966.33	Tallaght South
<b>South Dublin</b>	The Park Community Centre	€8,519.49	Firhouse/Bohernabreena
<b>South Dublin</b>	The WEB Project	€13,350.00	Rathfarnham/Templeogue
<b>South Dublin</b>	WASP Community Education Programme	€2,810.07	Rathfarnham/Templeogue
<b>South Dublin</b>	Whitechurch Community and Youth Centre	€7,574.25	Firhouse/Bohernabreena
<b>South Dublin</b>	Women's Shed @ The Park	€500.00	Firhouse/Bohernabreena
<b>South Dublin</b>	Women Together Tallaght Network	€2,843.24	Tallaght South



# Glossary

Phrase or Acronym	Translation	Explanation
<b>The Act</b>		The Local Government Reform Act 2014
<b>AIRO</b>		All-Island Research Observatory (Maynooth University)
<b>BTWEA</b>	Back to Work Enterprise Allowance	
<b>CCMA</b>	County and City Manager's Association	
<b>CDP</b>	Community Development Project	
<b>Chief Officer</b>		The person appointed by the Chief Executive of the Local Authority to assist the LCDC and manage the business of the Committee.
<b>CEP</b>	Community Enhancement Programme	(Funding) New scheme in 2018
<b>CFS</b>	Communities Facilities Fund (Funding)	
<b>CIF</b>	Community Initiative Fund (Funding)	
<b>Clondalkin Travellers DG (CTDG)</b>	Clondalkin Travellers Development Group	
<b>CPG</b>	Corporate Policy Group	
<b>CYPSC</b>	Children & Young People's Services Committee	Have Memorandum of Understanding with LCDC
<b>DEIS</b>	Delivering Equality of Opportunity in Schools	
<b>DEASP</b>	Department of Employment Affairs and Social Protection	
<b>DoH</b>	Department of Health	
<b>Department or DRCD</b>	Department of Rural & Community Development	<p>To provide a renewed and consolidated focus on rural and community development in Ireland.</p> <ul style="list-style-type: none"> <li>• Source of funding for LCDP programmes</li> <li>• Provides policy framework.</li> <li>• Enacts Government policy</li> </ul>



# Glossary

Phrase or Acronym	Translation	Explanation
<b>ECCE</b>	Early Childhood Care and Education	
<b>EMRA</b>	Eastern and Midlands Regional Assembly	
<b>EPA</b>	Environmental Protection Agency	
<b>ESF</b>	European Social Fund	The main financial instrument for supporting employment in the member states of the European Union as well as promoting economic and social cohesion. • Supports the SICAP programme with EU funding
<b>ESRI</b>	Economic and Social Research Institute	
<b>ETB</b>	Education & Training Board	
<b>EU</b>	European Union	
<b>Functional area of a Committee</b>		The administrative area of South Dublin County Council.
<b>FRC</b>	Family Resource Centre	
<b>HSDSG</b>	Healthy South Dublin Strategy Group	Developing Memorandum of Understanding with LCDC
<b>HSE</b>	Health Services Executive	
<b>ICT</b>	Information and Communications Technology	
<b>IHREC</b>	Irish Human Rights and Equality Commission	Ireland's national human rights institution and national equality body.
<b>ILDN</b>	Irish Local Development Network	The representative body for the country's Local Development Companies who deliver RDP LEADER, Social Inclusion Community Activation Programme, Rural Social Scheme, Tús, Local Employment Service, Jobs Clubs, Rural Recreation Programme, The Walks Scheme, Back to Work Enterprise Allowance and social enterprise programmes across rural and urban Ireland.
<b>IRIS</b>	Integrated Reporting and Information System	Pobal computer system for managing the SICAP programme
<b>JPC</b>	Joint Policing Committee	Have Memorandum of Understanding with LCDC
<b>KPI</b>		Key Performance Indicator
<b>LAG</b>	LEADER Advisory Group	
<b>LCDC</b>	Local Community Development Committee	
<b>LCDP</b>	Local Community Development Programme	Any action, intervention, programme, scheme or any other support, financial or otherwise, which is concerned with promoting the interests of local communities.
<b>LCG</b>	Local Community Group	
<b>LDC</b>	Local Development Company	The company that delivers the SICAP programme usually and area-based Partnership company
<b>LEADER</b>	Liaison Entre Actions de Développement. de l'Économie Rurale	LEADER is a French acronym that roughly translates as 'Liaison among Actors in Rural Economic Development.'
<b>LECP</b>	Local Economic and Community Plan	A 6-year plan jointly agreed by the LCDC and Economic SPC
<b>LEO</b>		Local Enterprise Office
<b>LGAS</b>	Local Government Audit Service	
<b>LGMA</b>	Local Government Manager's Association	
<b>MOU</b>	Memorandum of Understanding	An agreement between two (bilateral) or more (multilateral) parties. It expresses a convergence of will between the parties, indicating an intended common line of action.
<b>NEET</b>	Not in Employment, Education or Training	
<b>NESC</b>	National Economic & Social Council	
<b>NOSP</b>	National Office for Suicide Prevention	
<b>NUI Maynooth</b>	National University of Ireland, Maynooth	
<b>PEIL</b>	Programme for Employability, Inclusion and Learning	The Programme for Employability, Inclusion and Learning 2014-2020 is co-funded by the Government of Ireland and the ESF with a special allocation from the Youth Employment Initiative.



# Glossary

Phrase or Acronym	Translation	Explanation
<b>PI</b>	Programme Implementer SICAP programme	The Local Development Company (LDC) who delivers the
<b>Plan Pobal</b>		The 6-year Local Economic and Community Plan Pobal acts as an intermediary for programmes funded by the Irish Government and the EU by supporting groups and communities that are applying for, or receiving, funding for specific programmes. In practical terms, this can involve assessing funding applications, providing support, checking financial returns, processing payments, and auditing to ensure funds are used for the intended purposes.
<b>Publicly funded body</b>		A body whose funds, directly or indirectly and in whole or in part, come out of moneys provided by the Oireachtas for the purpose of performing its functions.
<b>PPN</b>	The Public Participation Network	The South Dublin County Public Participation Network (PPN) is the representative, collective voice of community & voluntary, environmental and social inclusion organisations in South Dublin County. Resident Association
<b>RA RACI</b>	Responsible, Accountable, Consulted, Informed	Responsibility assignment matrix: RACI is an acronym derived from the four key responsibilities most typically used: Responsible, Accountable, Consulted, and Informed.
<b>RAPID</b>	Revitalising Areas by Planning, Investment and Development	Programme ran from 2002-2012. A new programme was introduced in 2017 with the RAPID Funding Scheme
<b>Rathcoole EGF</b>		Rathcoole European Globalisation Fund
<b>Representatives of local community interests</b>		In relation to the functional area of a committee, means persons who are representative of community interests that are concerned with promoting the development of aspects of those interests within that area and such representatives may include representatives of non-governmental organisations, development agencies, community-based groups, recognised associations, cultural bodies, sporting bodies and social movements and networks.
<b>SEAI</b>	Sustainable Energy Authority of Ireland	
<b>SDCC</b>	South Dublin County Council	
<b>SDC Partnership</b>	South Dublin County Partnership	
<b>SDC Volunteer Centre</b>	South Dublin County Volunteer Centre	
<b>SICAP</b>	Social Inclusion and Community Activation Programme	
<b>SME</b>	Small and medium sized enterprise	
<b>SPC</b>	Strategic Policy Committee	To formulate, develop, monitor and review policies which relate to the functions of South Dublin County Council and to advise the Council accordingly. <ul style="list-style-type: none"> <li>Economic SPC agreed LECP.</li> <li>Community SPC deals with community related issues of SDCC</li> </ul>
<b>Standing Orders</b>		The Rules of Debate, the Agenda, and any "local" rules concerning the conduct of the meeting are loosely referred to as "Standing Orders."
<b>TU Dublin</b>	Technological University Dublin	Previously the Institute of Technology Tallaght
<b>Tusla</b>		The Child & Family Agency



Address: LCD C  
Housing, Social & Community Development Department  
South Dublin County Council  
County Hall  
Tallaght  
Dublin 24  
D24 A3XC

Web: <https://sdcc.ie/en/services/community/local-community-development-committee/>  
Email: [comdevof@sdblincoco.ie](mailto:comdevof@sdblincoco.ie)