



## POPULATION GROWTH & HOUSING

Q

Where do we deliver our new housing without contributing to urban sprawl?

Q

How and where do we deliver housing to suit different needs?

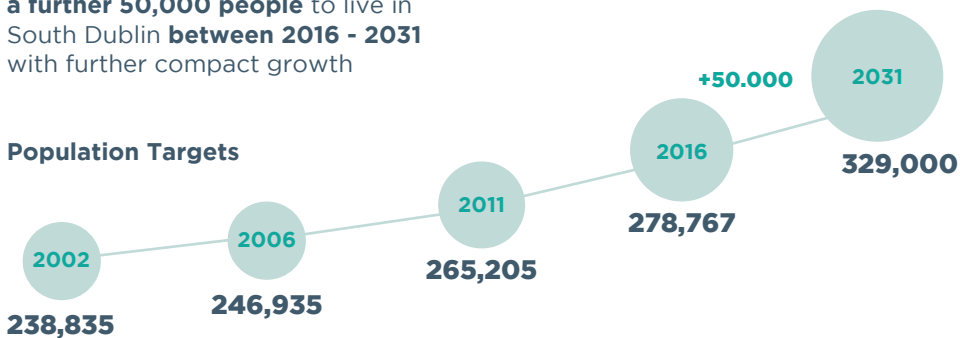
### Population Growth

South Dublin's population grew above the national average to **278,767 persons in 2016**.

National and Regional Plans allocate **a further 50,000 people** to live in South Dublin **between 2016 - 2031** with further compact growth

potential within the county up to 2040 and beyond. This equates to growth of just under 3,500 persons per year.

#### Population Targets



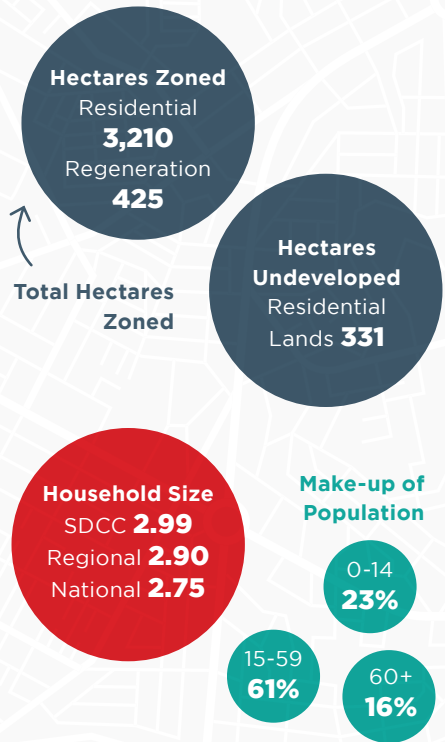
# Housing

**Housing** is recognised as a fundamental provision for all citizens. It is also the **cornerstone** in forming **sustainable communities**.

South Dublin had **98,387 homes** in 2016 and a **vacancy rate** of **3.6%**. By the end of 2019 a **further 4,774 homes** were built with more than **4,800 units with planning permission** not yet built.

The Development Plan will include objectives to **facilitate** and **deliver the housing needs** of **current** and **future populations** in **locations** which are served by **good quality infrastructure**.

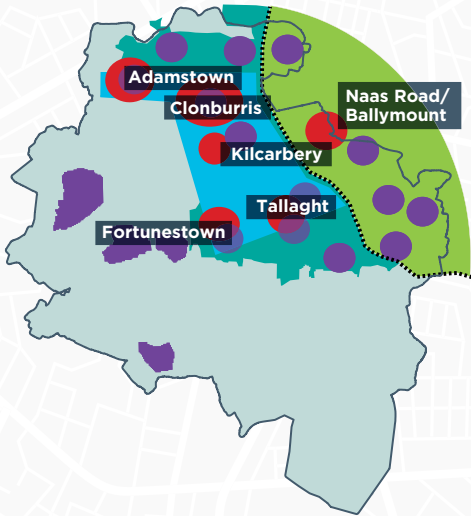
A **plan led approach** to **identifying housing needs** and supporting the sustainable **growth of urban and rural communities** will be developed through the Core Strategy and the Housing Strategy of the Development Plan.



## 2016 Household Types

Detached/Semi Detached SDCC **84.6%** Regional **80.5%** National **86.5%**  
Flat/Apartment SDCC **13.8%** Regional **17.7%** National **11.8%**

# Regional Strategy - Key Growth Centres in South Dublin



- Designated RSES growth areas within SDCC
- Dublin City and Suburbs
- Existing Settlements
- South-West Corridor
- County Boundary
- City Centre within the M50

Sources: Esri, HERE, Garmin, Intermap, increment P Corp., GEBCO, USGS, FAO, NPS, NRCAN, GeSBASE, IGN, Kadaster NL, Ordnance Survey, Esri, Japan, METI, Esri, China (HongKong), (c) OpenStreetMap contributors, and the GIS User Community

## Housing Delivery

A Development Plan must include a **Core Strategy** which sets out the housing needs for the county, demonstrates that there is sufficient land zoned to meet this need and

that it is in the right place with the relevant infrastructure.

To **deliver needed housing** for the county, the plan must:

**Ensure the location and scale of housing (Settlement Hierarchy) is consistent with National and Regional Plans**







**DELIVERY:** The delivery of compact growth within the county and an appropriate mix of housing which caters to current and future population growth is key to the delivery of sustainable communities within the County.

Shape | Explore | Experience