

Rossmore Road – Post Construction Monitoring & Assessment of KPI's

Surveys Undertaken Pre-Trial			
Traffic Surveys (20.06.23)	ATC	JTC	Pedestrian Counts
Parking Surveys (20.06.23)	Undertaken by DBFL		

Proposed Surveys to be Undertaken Post-Trial			
Traffic Surveys (TBC)	ATC	JTC	Pedestrian Counts
Parking Surveys (TBC)	DBFL		
Online Feedback Form	Online question survey for residents/locals to determine public opinion of trial		
Roadside Intercept Survey (B&A Research & Insight)	Question survey at roadside to gauge opinions on safety improvements, increased users along the scheme etc.		

Rossmore Road – Post Construction Monitoring & Assessment of KPI's

Q - What is your interest in the provision of walking and cycling facilities in this locality?

Student	4	(3%)
Parent	54	(42%)
Local Resident	86	(67%)
Local Business	1	(1%)
Pedestrian	52	(41%)
Cyclist	70	(55%)
Motorist	8	(6%)

Q - Do you feel safe as a pedestrian walking through the Orwell Roundabout?

No = 66	(54%)
Yes = 56	(46%)

Q - Pedestrians and Cyclists - What improvements would make you feel safer when walking or cycling through the Orwell and Templeville Roundabouts? You can choose more than one option.

Slower vehicle speeds =	62	(48%)
Wider footpaths =	40	(31%)
Formal crossing points – zebra =	70	(55%)
Formal crossing points – signalised =	46	(36%)
Better protected cycle lanes =	77	(60%)
Reduction in the number of traffic lanes at roundabouts =	31	(24%)
Replacing the roundabout with a traffic signal controlled junction =	25	(20%)
Other =	12	(9%)

Online Surveys (Pre Trial, Post Trial)

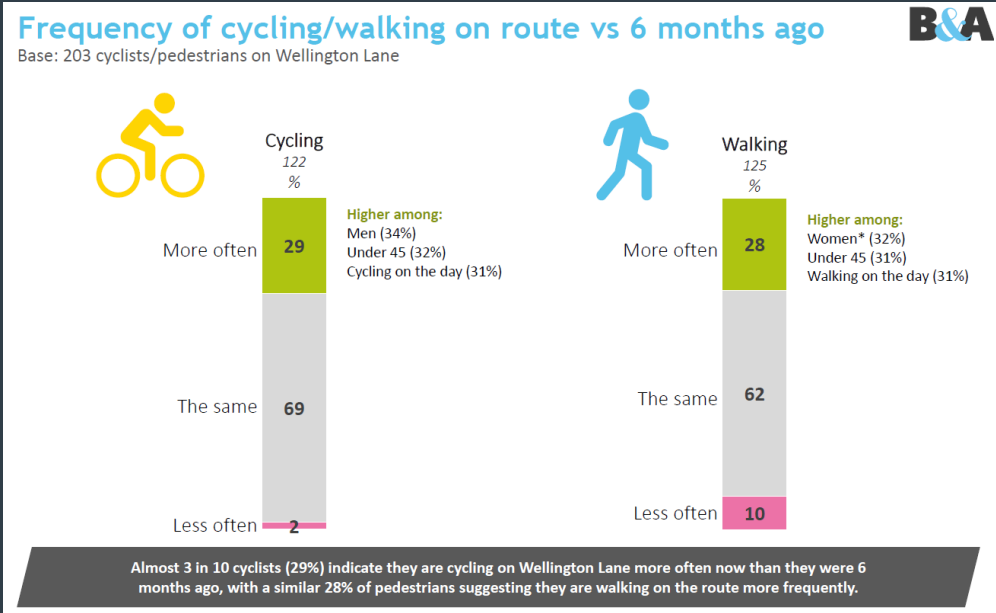
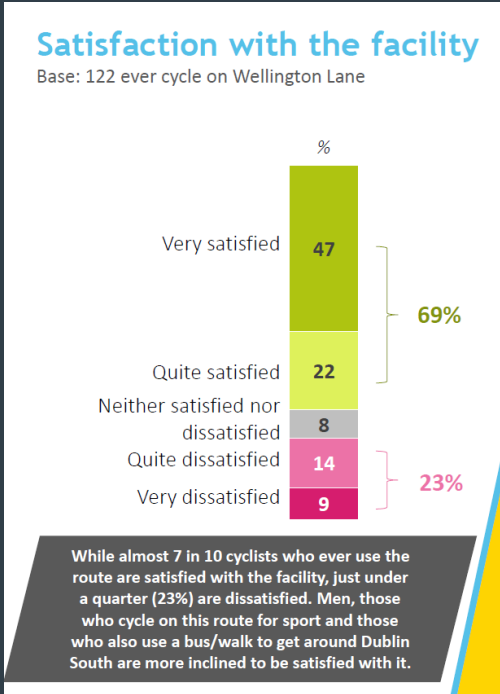
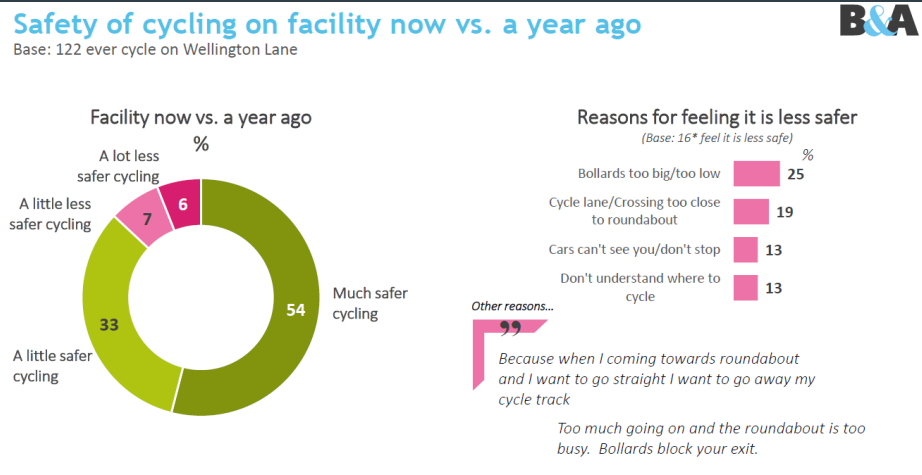
Q - Do you feel safe as a pedestrian walking through the Orwell Roundabout?

No = 66	(54%)
Yes = 56	(46%)

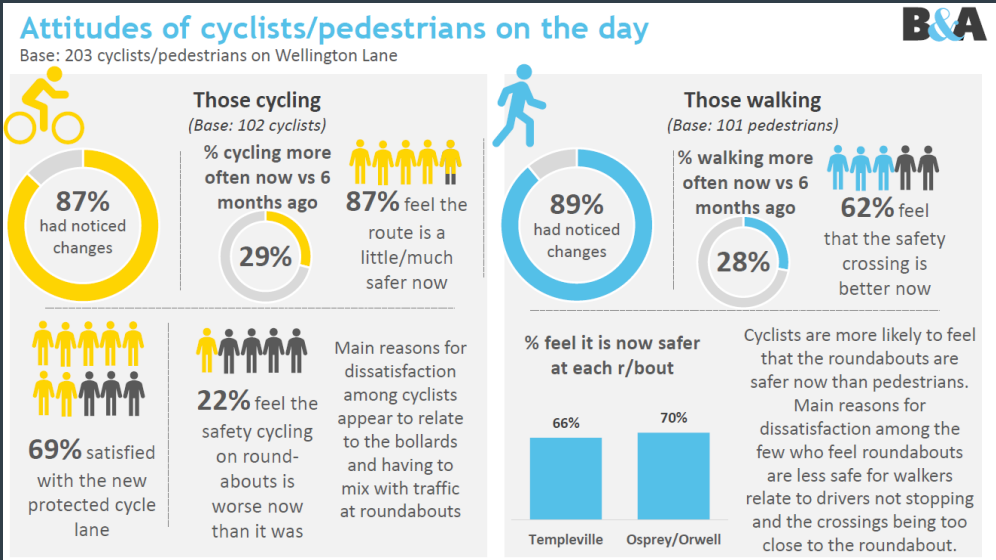
Why?

Difficult to cross the road = 40	(33%)
Vehicles travel at high speeds = 48	(39%)
No formal crossings = 42	(34%)
Unsure if drivers and cyclists will stop = 3	(2%)
Pedestrian lights at only two crossing points = 1	(1%)
No zebra crossing = 1	(1%)

Rossmore Road – Post Construction Monitoring & Assessment of KPI's



Roadside Intercept Surveys



Rossmore Road – Post Construction Monitoring & Assessment of KPI's

Proposed KPIs for Trial Assessment

Safety of Scheme – from B&A Survey & Online Survey Feedback

Speed Reduction – from ATCs

Cycle / Pedestrian Satisfaction of Proposals – from B&A Survey

Cyclist and Pedestrian Numbers/ Percentages Pre Trial to Post Trial – from JTC/ATC/Ped Surveys

Parking – from Parking Surveys