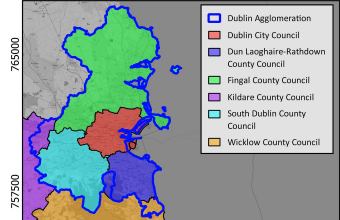
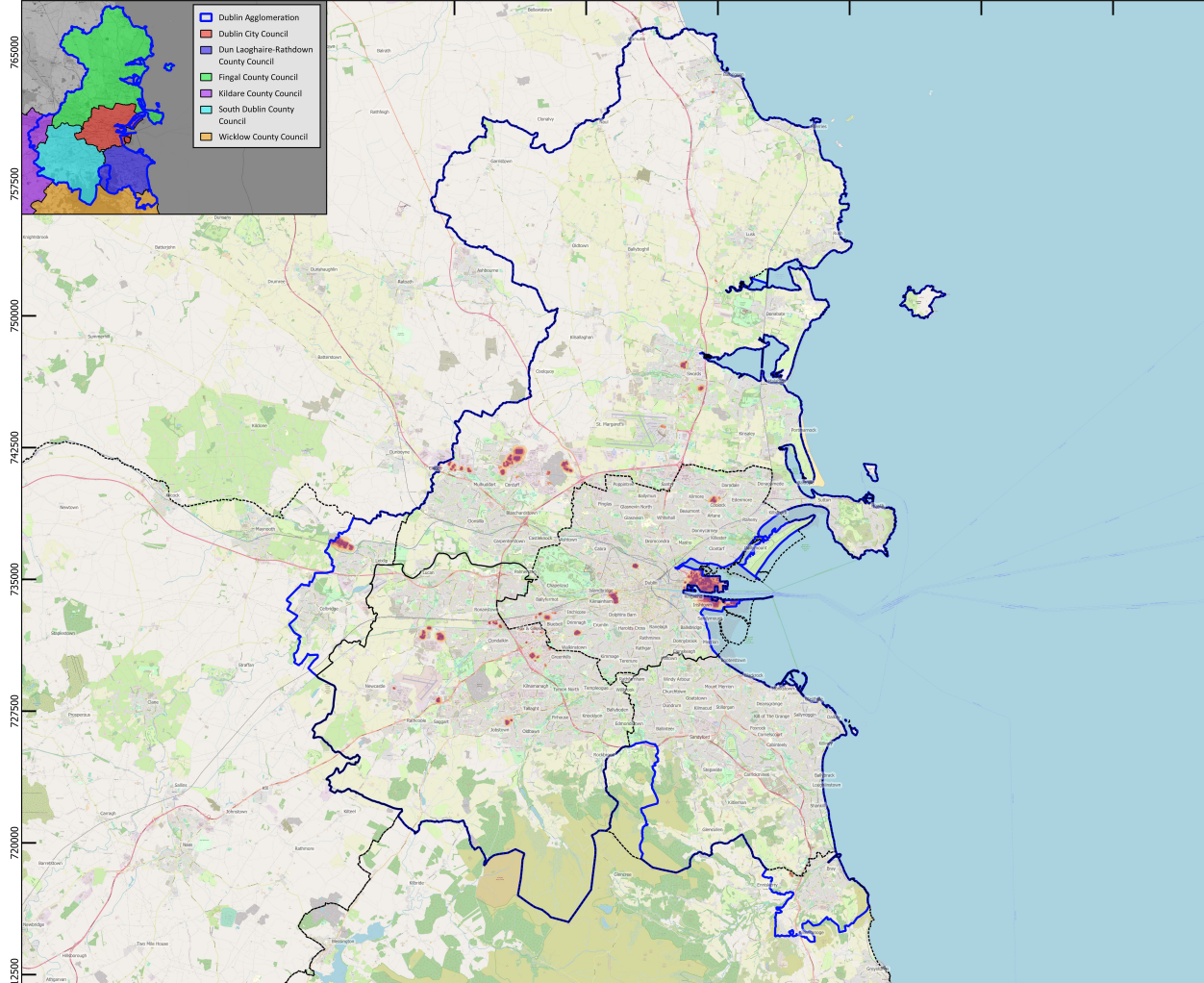


682500 690000 697500 705000 712500 720000 727500 735000 742500

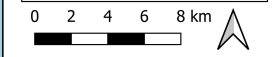
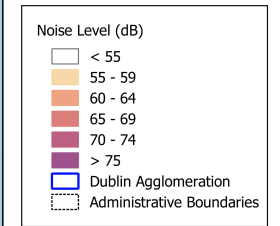


755000  
757500  
750000  
742500  
735000  
727500  
720000  
712500

**Key**

**Dublin Agglomeration**  
**Strategic Noise Map**  
**Industry**  
**Lden**

**Environmental Noise Directive (END) Round Four – European Communities (Environmental Noise) Regulations 2018 – 2021**



The day-evening-night level ( $L_{den}$ ) is a noise indicator for overall annoyance based upon annual average A-weighted long-term sound over 24 hours with a 5 dB(A) penalty for evening noise (19:00-23:00) and a 10 dB(A) penalty for night-time noise (23:00-07:00).

The background mapping used in this figure is available from © OpenStreetMap under the Open Database License (© OpenStreetMap contributors: <https://www.openstreetmap.org/copyright>)

The Administrative Area boundaries and Centres of Population placename datasets are available through Ordnance Survey Ireland (OSi) as Open Data licenced through the Creative Commons Licence.

The noise mapping results are based upon noise source data captured in 2021.

The noise maps have been produced as a requirement of the Environmental Noise Directive (END) 2002/49/EC, as implemented in Ireland by The European Communities (Environmental Noise) Regulations 2018, S.I. No. 549 of 2018 (as amended).

The Noise Mapping Bodies, as defined by the Environmental Noise Regulations 2018-2021, have made all reasonable effort to ensure that the information displayed on these Strategic Noise Maps is up to date and accurate. These Strategic Noise Maps are intended to be used for the purposes of strategic assessment of noise in-line with the requirements of the END and the Regulations. The information displayed on them does not constitute legal or professional advice and the Noise Mapping Bodies cannot accept any liability for actions arising from their use.

