

South Dublin County Local Community Development Committee

Annual Report 2021



LCDC

Coiste Forbartha Pobail Áitiúil
Local Community Development Committees



We are grateful that because of the commitment and efforts of all our members and partner organisations, we continued to fulfil our function throughout the pandemic year of 2021. Thank you to all of those who gave their time professionally and in a voluntary capacity to ensure that was the case.



Contents

1	Foreword by Local Community Development Committee Chairperson Professor Mary P. Corcoran	5
2	Members of the South County Dublin Local Community Development Committee	6
3	Introduction to Local Community Development Committee Annual Report 2021	11
4	Membership and Organisational structure of the South Dublin County Local Community Development Committee	14
5	Report of Local Community Development Committee meetings in 2021	15
6	Report of Local Community Development Committee Subcommittees 2021	16
7	LCDC Explainer and Presentations to LCDC in 2021	18
8	Report of Social Inclusion Community Activation Programme	20
9	Local Economic and Community Plan 2015-2021	23
10	LEADER	23
11	Local Community Development Committee Funding 2021	26
12	Appendices	28

Appendices

Appendix 1	Membership of South Dublin County Local Community Development Committee and schedule of meetings 2021	28
Appendix 2	Membership of Local Community Development Committee Subcommittees 2021	29
Appendix 3	Local Community Development Committee funding allocations 2017-2020	30
Appendix 4	Local Community Development Committee Community Enhancement Funding 2021	38
Appendix 5	Local Community Development Committee Community Enhancement Covid 19 Funding 2021	40
Appendix 6	Local Community Development Committee Community Social Enterprise Funding 2021	30
Appendix 7	LEADER	38
Appendix 8	Community Actions under the Local Economic and Community Plan	40





1 | Forward

by Local Community Development Committee Chairperson Ms. Mary Corcoran

2021 was an eventful year for the LCDC.

The pandemic continued to present us with new challenges. Problems such as food poverty and food insecurity were exacerbated by the crisis, and we also witnessed increased rates of homelessness and addiction. Our Annual Report 2021 demonstrates the extent to which we maintained our commitment as an LCDC to local and community development in the face of emergent challenges. The LCDC has a major oversight role in the disbursement of funding in South Dublin County. We do not take this responsibility lightly and strive to observe the best principles of good governance in all our decision-making. There was a significant increase in funding under the Community Enhancement Programme for 2021 in light of the ongoing pandemic, and we worked diligently to ensure that we could deliver much needed supports to a wide range of community groups. In 2021, the Slaintecare Healthy Communities Programme was launched. South Dublin County Council and the Department of Health have a service level agreement up to the end of 2024. The main focus of the agreement is to coordinate interventions at local level “to reduce health inequalities by addressing wider social determinants of health in communities experiencing high levels of deprivation.” The LCDC will play an important oversight role as this programme is delivered in targeted areas through a local implementation team. The Annual Report details the Slaintecare Community Enhancement Programme projects which received funding in the latter part of 2021.

The LCDC is also responsible for creating the community dimension of the Local Economic and Community Plan. We are charged with developing a new plan which will come into force at the beginning of 2023. The Department of Community and Rural Development officially launched the new LECP Guidelines on November 11, 2021. The new revised guidelines build on the lessons learned from the current LECP cycle, as well as reflecting the needs of communities as we emerge from the Pandemic. The new approach to the process, with a Framework LECP coupled with Implementation Plans covering a shorter period, will ensure LECPs are more agile and allow for emerging needs. To develop a plan that is meaningful to the communities we serve, we plan to consult as widely as possible using a range of different methods to reach people and canvass their views. We want the

new LECP to be relevant, grounded in community needs and socially inclusive. If you would like to find out more about how the LCDC works we invite you to view the short animation available at <https://www.sdcc.ie/en/services/community/local-community-development-committee/> You can also contact the LCDC at comdevof@sdublincoco.ie. Our meetings in 2021 were greatly enhanced by the opportunity to hear presentations from a range of people across the service provision sector on the challenges and opportunities for South Dublin community development: Comhairle na nOg (presented twice); The Childhood Development Initiative Tallaght West; the South Dublin Partnership LDC; Slaintecare Healthy Communities Programme and the Healthy County Strategy.

The global pandemic continued to overshadow all of our activities and those of the organisations and services with whom we interact in South Dublin County. However, the mood music began to change when the national vaccination campaign got underway and we had a first-hand insight into that from the deputy chairperson of the LCDC, Tricia Nolan, Director, South Dublin Volunteer Centre. The Volunteer Corps had spent much of 2020 supporting the testing programmes first in Tallaght Stadium and later in City West. In 2021, the volunteer corps redoubled their efforts - taking on a role as stewards and front of house in the largest and busiest mass vaccination centre in the country, with the HSE’s operation at Citywest Convention Centre giving up to 6,000 vaccinations every day. We are grateful to Tricia Nolan and all the other volunteers in South Dublin County for working so selflessly on all our behalf throughout the year.

A number of colleagues left the LCDC in 2021. We thank them for their service and commitment to the goals of community development and inclusion and we welcome new members to our committee. We are grateful that because of the commitment and efforts of all of our members and partner organisations, we continued to fulfil our function throughout the year of 2021. Thank you to all of those who gave their time professionally and in a voluntary capacity to ensure that was the case.

Mary P. Corcoran
Chairperson, LCDC, South Dublin County Council



2 | Members of the LCDC 2021

REPRESENTATIVE	SECTOR
Private	
Mary Corcoran	Community
Phil Mulvaney	
Tony Fegan	
Larry O'Neill	SDC Partnership
Tricia Nolan	PPN Community Pillar
Kattia Siles Tomney	
Justin Byrne	PPN Environment Pillar
Jessica Conlon	PPN Social Inclusion Pillar
Bibiana Savin	
Andy Leeson	Youth Services
PUBLIC	
Cllr Kieran Mahon	Councillor
Cllr Alan Hayes	
Cllr David McManus	
Padraig Rehill	HSE
Margaret McQuillan	DDLETB
Deirdre McKeon	
Marguerite Gallagher	
Eugene Donnelly	DSP
Thomas Rooney	LEO
Colm Ward	SDCC
Jennifer Moroney Ward	Chief Officer, SDCC
Andy Lane	SDCC



3 | Introduction

In 2021 the Covid-19 pandemic continued to cause disruption and a change in how the LCDC met and processed its work plans. The Committee continued to meet online, with meetings well attended and decisions and action items progressed. A key responsibility of the LCDC is oversight of the Social Inclusion and Community Activation Programme (SICAP). SICAP provides funding to tackle poverty and social exclusion and actions are delivered by South Dublin County Partnership (SCDP).

The 2021 end of year review by POBAL reported that all the revised targets were achieved including the submission of a video case study. A total of €2,181,900 was dispersed to SDCP via the LCDC in 2021.

The SICAP programme continued to support the SDCP to deliver targeted and impactful services throughout the year and the mid year review in 2021 offered the Committee an opportunity to reflect on priorities for the year ahead coming out of the pandemic and considering future priorities.

Funding through the Community Enhancement Programme (CEP) also remained the responsibility of the LCDC, and in 2021, some 32 beneficiaries benefited from Community Enhancement Programme (CEP) funding totalling €171,000. Community Enhancement funding was aimed at supporting community groups to enhance their facilities in disadvantaged areas of the county.

In addition, the LCDC has a role in the coordination of the Healthy Ireland Fund. During 2021 Healthy Ireland also managed a fund to support projects delivering mental health projects across the county. 30K was available for such grants with 8 groups grant aided during 2021.

The LEADER programme has added to the already significant role played by the LCDC in the oversight of public funding to bring about the improved social, economic and community development of the County. Leader funded projects in Saggart and Glenasmole have moved forward in 2021 with designs and tender competitions taking place to progress significant works to upgrade community facilities in both locations.

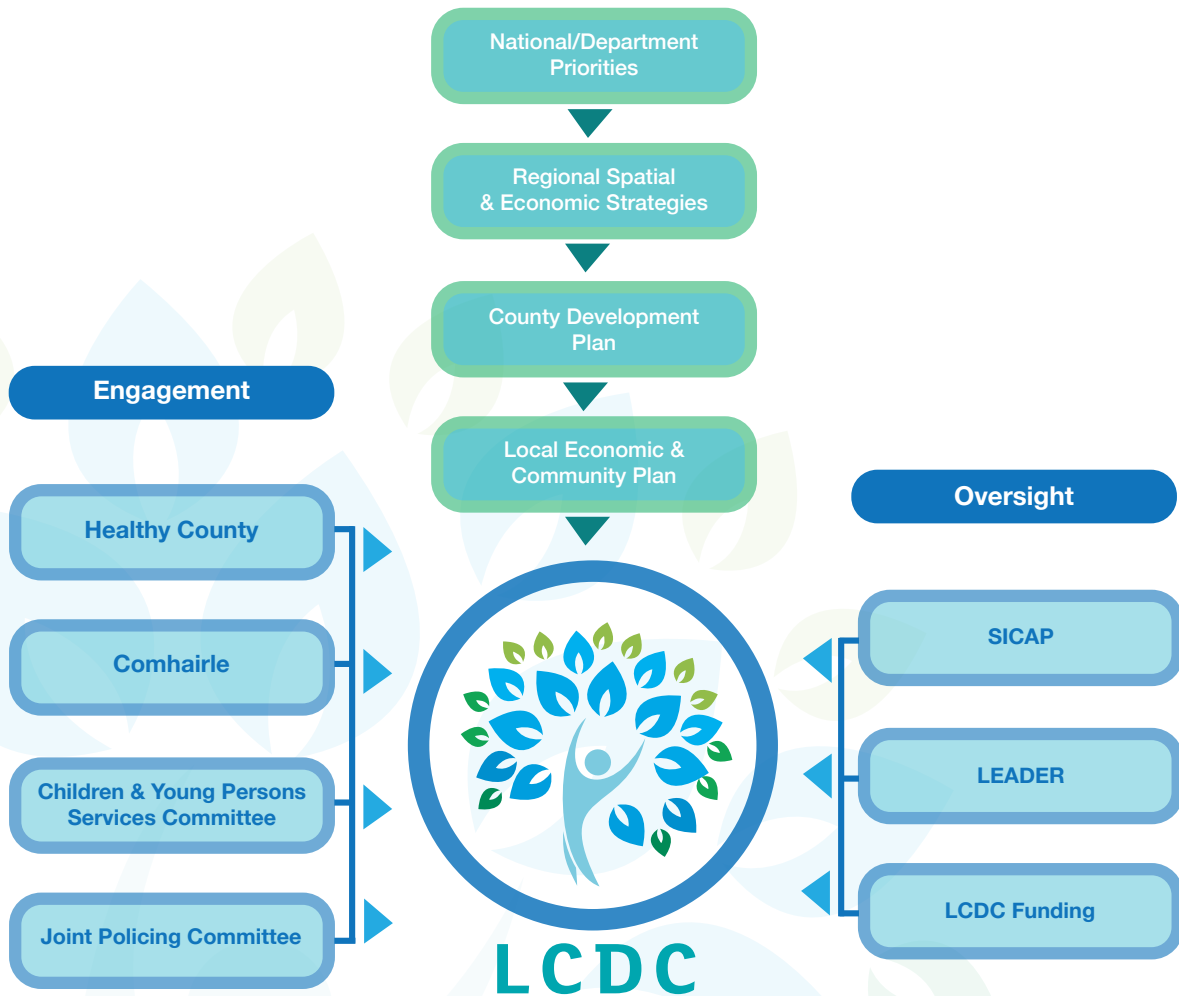
The LCDC also welcomed some new representatives from the PPN during 2021 and worked to support PPN groups to access funding supports and guidance via SDCP's community department. PPN groups continued to deliver vital services at community level with an outstanding example being South Dublin Volunteer Centre's consistent support at Citywest Vaccination and Testing Centre during 2021.

Finally, the LCDC also has responsibility for progression of the Community elements of the 6 year Local Economic and Community Plan (LECP), and development of Dublin Rural LEADER programme. 2021 marks the end of the last plan with guidelines for the next phase of the LCCD launched by the Department of Rural and Community in Nov 2021.

We look forward to organising consultative events, both online and offline, throughout 2022 to inform and guide our new LECP for 2022 to 2026.

4 | Membership and Organisational Structure

Membership and Organisational Structure of the South Dublin County LCDC



The membership of the South County Dublin LCDC is drawn from community representatives, state agencies and local authority elected members. The membership of the LCDC and attendance at meetings is set out in Appendix 1.

The following members left the LCDC in 2021. The Committee express their thanks to them for their valuable contributions during their membership:

- Marguerite Gallagher,
- Kattia Siles Tomney,
- Padraig Rehill,
- Maurice Walsh,
- Aiden Lloyd,
- Gerry Stockil



5 | Report of LCDC Meetings in 2021

There were four meetings of the LCDC in 2021

Meetings in 2021 covered a range of issues including the following:

LCDC Governance:

- Comhairle na nÓg and the LCDC
- LCDC Audits
- Diversifying Membership of the LCDC
- LCDC Annual Report
- LCDC Conference/ Promotion
- LCDC Event Report Back

SICAP

- 2020 Annual Performance Review & 2021 Annual Plan
- SICAP 2021 Mid-Year Review
- Contract Extension & SICAP Mid-Programme Review (Amended)
- SICAP: Case Study – The 2021 Case Study showcases the response of SDCP to Lone Parents in 2021 with a particular focus on the rise of mental health responses following Covid 19
- 2022 SICAP Annual Plan
- Internal Audit Report: SICAP 2019

Funding

- Funding Updates
- Dormant Accounts - Social Enterprise Funding Opportunities
- Community Enhancement Programme (CEP) 2021 Rounds 1 & 2
- CEP Covid 19

LECP

LEADER 2014-2021 Updates

Presentations & Other reports

- Healthy County Presentation
- Funding Hub Presentation
- Comhairle na nÓg Members presentation
- SDC Partnership Presentation
- Slaintecare Presentation



6 | Report of LCDC Subcommittee meetings in 2021

SICAP Oversight Subcommittee

The SICAP Oversight Subcommittee was established in November 2016 to have an oversight on the SICAP contract and report to the LCDC. The committee met four times in 2021

- 15th June 2021
- 28th July 2021
- 8th October 2021
- 22nd October 2021.

Members of the SICAP subcommittee: **Kieran Mahon, Alan Hayes, Mary P. Corcoran** and **Larry O’Neill**

SICAP Mid-programme Review Workshop took place on the 24 November 2021.

Funding Subcommittee

The Funding Subcommittee has oversight of and report to the LCDC on funding allocated to the LCDC. During 2021 the subcommittee were responsible for the following grant funding:

- Community Enhancement Programme
- Dormant Accounts - Social Enterprise Capital Grant Scheme
- CEP Covid 19 Funding.

Members of the Funding Subcommittee in 2021 were: **Jennifer Moroney Ward, Mary Corcoran, Tricia Nolan, Deirdre McKeon** and **Cllr. Kieran Mahon**

The Funding Subcommittee met twice in 2021:

- 22nd April 2021
- 20th December 2021.

Strategy and Planning Subcommittee

The LCDC Strategy & Planning Subcommittee held its first meeting on the 19th May 2021 and held a joint meeting with the SICAP Oversight Committee on the 8th September 2021.

The sub-committee is delegated by the LCDC to consider the following:

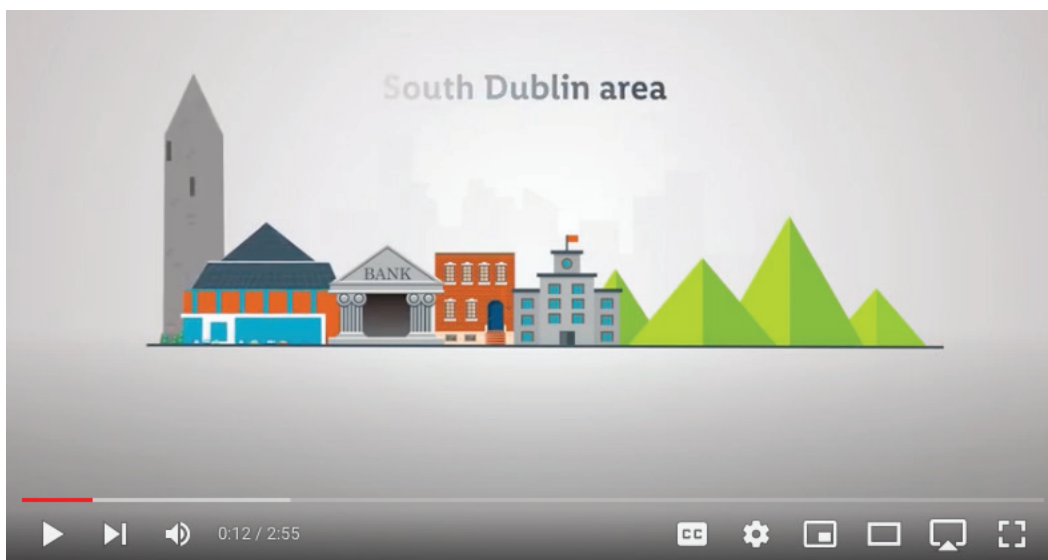
- LCDC Promotion and support the secretariat in producing Annual Reports
- Engagement through conferences/events and to plan an LCDC sponsored event to focus on the role of the LCDC in supporting communities and community development within the County.
- LCDC Annual Planning and presentations for future LCDC meetings
- To consider a new LECP Plan

Members of the Strategy and Planning Subcommittee in 2021 were: **Mary Corcoran, Phil Mulvaney, Bibiana Savin** and **Tony Fegan**.



7 | LCDC Explainer and Presentations to LCDC in 2021

- This short video explains the workings of the LCDC:
https://www.youtube.com/watch?v=_o7IPeDBbWQ



April 2021

The LCDC played a role in developing A Strategy for Healthy South Dublin 2019-2022, and holds a remit for monitoring its implementation. The LCDC was updated on progress to date by Jonathan Hayden.



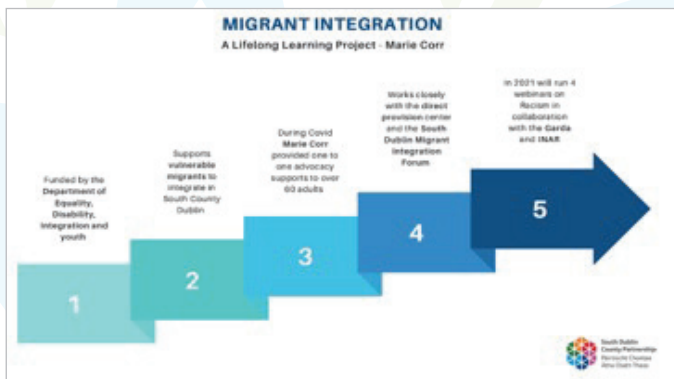
June 2021

Sam Carroll and Elissa Dowling of Comhairle na nÓg made a presentation on their work priorities for 2021, Climate Action and the Mental Health of Young People during Covid-19. They summarised the work they had done on climate migration and waste management with the Climate Change office and also contributed to SDCC Climate Action Plan. They used their blog and Instagram account to provide support for young people and mental health advice.



September 2021

Larry O'Neill gave a presentation on the SDP Partnership's work focusing on mission, thematic areas and key activities being undertaken, governance and financial management.



November 2021

Colm Ward gave a presentation on Slaintecare and the role that the LCDC would be expected to play in relation to the dissemination of funds to targeted disadvantaged areas.

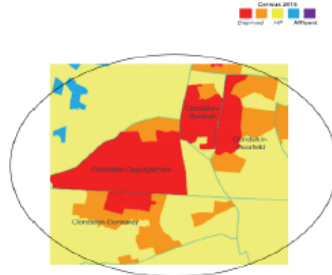




Sláintecare Programme Areas

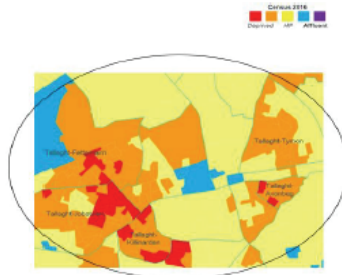
Dublin - Clondalkin

Area:	Dublin - Clondalkin
Electoral Districts:	Clondalkin-Cappaghmore, Clondalkin-Rowlagh, Clondalkin-Dunawley, Clondalkin-Moorfield
HP Pobal Deprivation:	-9.5 to -17.5



Dublin - Tallaght

Area:	Dublin - Tallaght
Electoral Districts:	Tallaght-Fettercairn, Tallaght-Killinarden, Tallaght-Tymon, Tallaght-Avonbeg, Tallaght-Jobstown
HP Pobal Deprivation:	-6.9 to -19.5



Electoral Division	HP2006	HP2011	HP2016
CLONDALKIN-CAPPAGHMORE	-11.3	-20.9	-20.2
CLONDALKIN-DUNAWLEY	-10.3	-16.0	-14.0
CLONDALKIN-MOORFIELD	-12.7	-17.3	-16.5
CLONDALKIN-ROWLAGH	-17.7	-23.0	-21.8
TALLAGHT-AVONBEG	-16.3	-23.2	-21.3
TALLAGHT-FETTERCAIRN	-16.9	-20.0	-17.3
TALLAGHT-JOBSTOWN	-6.2	-13.2	-11.6
TALLAGHT-KILLINARDAN	-19.4	-24.8	-23.9
TALLAGHT-TYMON	-8.6	-16.8	-15.2

December 2021

Comhairle naOg presented an update on their work during 2021 and plans for 2022 through video message.



LCDC 3- Presentation by Sou



Over the Fence by Child by the Childhood Development Initiative in Tallaght West

Following the launch of *Over the Fence*, key findings were presented to the South Dublin LCDC on December by the Childhood Development Initiative in Tallaght West 8th, 2021.

The South Dublin Children and Young People's Services Committee (CYPSC) and Local Community Development Committee (LCDC) started a process of developing a Local Child Poverty Action Plan for South Dublin County, informed by the *Over the Fence* report.



Other events of note in 2021:

LCDC workshop to explore how we can support the most marginalised in our Communities

As part of the SICAP mid-year review, the LCDC organised a workshop facilitated by Paula Donovan, a former councillor and former member of the LCDC on November 24, 2021. The workshop is intended as the first in a series of collaborative sessions that will continue in 2022 to explore how we can support the most marginalised in our communities. This work will feed into the new Local Economic and Community Plan.



Focus Group for LCDC Chairs to discuss current LECP Guidelines.

On March 24, 2021 Mary Corcoran, Chair of the LCDC attended a Focus Group online organised by the Department of Rural and Community Development. The focus group was organised to give LCDC chairs an opportunity to express their thoughts on the overall format of the current LECP guidelines, to provide feedback on how climate action efforts can be incorporated into the new guidelines; to provide feedback on other policy areas that should be included; to offer views on how the LECP should best reflect the post-pandemic situation.



“Community Call: Learning for the Future”

On October 21, 2021 Tricia Nolan the Deputy Chair of the LCDC attended “Community Call: Learning for the Future” webinar on behalf of the LCDC.



8 | Report of SICAP (Social Inclusion Community Activation Programme)

A key responsibility of the South County Dublin LCDC is oversight of the SICAP (Social Inclusion Community Activation Programme). A funding allocation of €2,169,313 was received from the Department of Rural & Community Development in 2021.

The current SICAP (2018-2022) contract was tendered in 2017 and the contract was awarded to South Dublin County Partnership (SDCP). 2021 was the fourth year of the current contract and South Dublin County Partnership (SDCP) has successfully achieved both KPIs included in SICAP contract:

1. Meeting the Annual Targets	Achieved	% Achieved
Achievement of KPI 1 Target 82	85	104%
Achievement of KPI 2 Target 1112	1114	103%
Achievement of % KPI 2 from disadvantaged areas Target 41%	37.05%	37.05%

37.05% in disadvantaged areas: is below the target but this target has been affected considerably by Covid 19. It should be noted that work with disadvantaged communities is harder online due to deficits in access, space, and skill sets.

Case Study for 2021

The SICAP Case Study on the response of South Dublin County Partnership to Lone Parents in 2021 with particular focus on the rise of mental health responses following Covid-19.

The case study builds on the work of the Community Call which reached over 5000 people and last year's case study. It focused on responding to the needs of Lone Parents, their mental health and wellbeing, highlighting isolation, loneliness and anxiety experience by many. It captured the collaborate teamwork of the SICAP funded Senior Mental Health & Wellbeing Manager with other teams such as Children & Families and Enterprise & Employment.



[SDCP 2021 Case Study - Lone Parents and Mental Health During Covid19 - YouTube](#)



Key Performance Indicators

The following table sets out the key performance indicators, emerging needs and case studies for SICAP 2018-2020

	South Dublin County (Lot 3-1)			
Area	2018	2019	2020	2021
KPI 1	97	97	75	82
KPI 2	1483	1483	890	1,112
Emerging Needs Target Group	The Homeless	The Homeless	The Homeless with an increased focus on Roma Homeless	Single parents and mental health
Case Study	Goal 2: “Development of Stagecraft Musical Group”	Goal 2: “4 the Family”	Goal 1 & 2: South Dublin County Community Call- SICAP Case Study 2020	Goal South Dublin County Partnership to Lone Parents in 2021 with particular focus on the rise of mental health responses following Covid-19





9 | Local Economic and Community Plan 2016-2021

The Local Economic and Community Plan was agreed at a joint meeting of the LCDC and the Economic Strategic Policy Committee (SPC) held on the 22nd October 2015, ratified by the Eastern & Midland Regional Assembly on the 13th November 2015 and adopted by South Dublin County Council's Full Council on the 14th December 2015. The LCDC has engaged with the Plan both in terms of monitoring progress and being able to champion issues and themes. The Community elements of the South County Dublin LECP are listed in Appendix 8.

10 | LEADER Programme

LEADER covers the rural areas of South Dublin County (the electoral districts (EDs) of Newcastle, Rathcoole, Saggart, Ballinascorney and Bohernabreena). Following agreement between South Dublin County Council, Fingal County Council and Dún Laoghaire-Rathdown County Council, 5 members of the LCDC were selected to sit on the Rural Dublin Local Action Group for this round of LEADER Rural Development funding.

The 5 members are:

- **Prof. Mary P. Corcoran** (Community, Maynooth University)
- **Tricia Nolan** (PPN Community Pillar)
- **Justin Byrne** (PPN Environment Pillar)
- **Cllr David McManus**
- **Colm Ward** (SDCC)

The Committee met on:

- **3rd March 2021**
- **27th May 2021**
- **12th August 2021**
- **11th November 2021**
- **16th December 2021**

In addition, the LAG is supported by the LAG Monitoring Group and its membership includes Colm Ward and Cllr David McManus

LAG Evaluation Committee: This committee evaluates recommendations for funding from the Programme implementer and then makes recommendations to the LAG membership is drawn from the three counties.

Progress on LEADER projects is set out in Appendix 7.



11 | LCDC Funding 2021

Social Inclusion Community Activity Programme (SICAP)

A funding allocation of €2,169,313 was received from POBAL in 2021. Details of the 2021 SICAP programme are outlined in part 5.

Community Enhancement Programme

The Community Enhancement Programme in 2021 with a total allocation of €169,399 which was allocated as follows:

Funding Available	Approved	Approve No.
€169,399	€170,725	32
The excess amount of €1,326 approved will be paid out of the €169,399 if any of the groups are paid less due to the quotations received.		

Community Enhancement Emergency Funding 2021

The Department of Rural and Community Development provided funding in the sum of €63,603.08 under the Community Enhancement Emergency Fund which was allocated as follows:

Funding Available	Approved	Approved No.
€63,603.08	€63,603.08	26

Social Enterprise Capital Grants Scheme 2021

The Department of Rural Community and Development under the Policy to support Social Enterprise's announced funding under the Social Enterprise Capital Grants Scheme 2021.

Funding Available	Approved	Approved No.
€54,127.73	54,127.73	7

The LCDC also continued to monitor funding allocations carrying over from 2017, 2018, 2019 and 2020 under the Community Enhancement Programme.



Healthy Ireland



Healthy
Dublin City

In 2016 South Dublin gained accreditation as HI Healthy South Dublin. The Project is managed by South Dublin County Council in partnership with the HSE, South Dublin County Partnership, Trinity College Public Health & Primary care, South Dublin Volunteer Centre, Tallaght University Hospital, Technological University Dublin, and the Education Training Board.

The Healthy county Strategy 2019 – 2022 is a Multi-agency strategy that is broken down into various Actions / Overarching themes.

The actions cover six areas identified by the National Health Ireland Strategy:

- **Cross cutting themes**
- **Healthy Weight,**
- **Physical Activity,**
- **Mental health & wellbeing,**
- **Sexual Health,**
- **Alcohol and Tobacco**

38 actions within the strategy all feed into the above Themes.

The Healthy County Steering Group is a subgroup of the LCDC, chaired by Colm Ward. The Group met approx. 6 times in 2021.

Funding

Funding was received from the Department of Health, via Pobal for the delivery actions in the strategy. South Dublin County Council dispersed the funding to the Lead Partners to carry out the actions of the strategy. Progress reports and financial templates were completed and returned to Pobal at various stages of the funding period.

The total allocation of funding for the two years under Round 3 was €246,050 (2019 -2021)

- **Year 1 - €153,200**
- **Year 2 - €92,850**
- **Total - €246,050**

Year 1 expenditure deadline was extended due to Covid 19 until December 2021.

Delivery of the HI Programme Funding was monitored by the South Dublin Healthy County Group who are a subgroup of the LCDC. The subgroup reported directly to the LCDC.

All actions partners and the CYPSC Coordinator are members of either Healthy County Group or LCDC.



Brief description of the Actions that the Funding is allocated to:

Action 1 - Social Prescribing Supports – €65,000 contribution to salary for Social Prescribing Officer split over two years.



Action Description

The South Dublin County Partnership (SDCP) Social Prescribing Pilot Project is a new service that connects people with supports and activities in the community to strengthen their health, wellbeing and quality of life. Healthcare Professionals from two practices (GP's and Nurses) referred patients they considered would benefit from non-clinical ways of support available in the community, mainly to maintain or improve their social connections. Loneliness, Social Isolation, Bereavement, Physical Inactivity, family carers supports and lack of social connectedness are some examples of reasons for referring to Social Prescribing Service.

Geographic Area that will Benefit – Tallaght

Lead Organization - South Dublin County Partnership Company Ltd

Other Organisations involved in implementation - HSE, CHO 7, GP services in Glenview and Brookfield, South Dublin County Council, Citizens Information Centre, South Dublin Volunteer Centre, Local community Groups, Tallaght Hospital, South Dublin Healthy County Group.

Progress:

150 people have been referred to date to the service since its inception.

The Social prescriber during Covid made contact with over 241 people . The referrals were mainly from over 70years and were cocooning. 118 were contacted by phone calls and emotional support given.

There was a group of 12 elderly people who were cocooning during the height of Covid linked in 87 times with the social Prescriber for zoom training and wellness check ins and steps challenges. The Sp service was a valuable support to the GP services and other agencies getting over 40 referrals from the GP practices in the height of the pandemic.

Testimonials - One person, who took part in virtual activities during the lockdown, as restrictions got underway, described being contacted by Deirdre as *"a lifeline during this cocooning time"*.

Participant 2 *"It was great to have contact every week. I really enjoyed the chat and the meditations we did together gave me great peace and calm. I learnt how to do Skype and to perfect using Zoom on my tablet and phone. Overall the contact gave me assurance that I was not alone during this long, protracted shutdown and that if I needed help, I could get it."*

Participant 3 commented: *"The weekly visit on Zoom was a god-send at the time, and the wellness talks were of great benefit, I looked forward to them every week. The virtual walk each week was excellent and allowed us to express ourselves walking in different counties, from Tramore Waterford to Cork to Galway. This really was a great experience and very important to the whole group."*



Action 2 - Community Alcohol Programme - €27,000 salary contribution – Community Alcohol worker – split over two years.

Action Description:

The Community Alcohol Programme (CAP) is designed for people who are problematically using or dependent upon alcohol. It is for those who drink heavily or on a regular basis, and whose persistent drinking interferes with their health, relationships, employment or other key aspects of their lives.

It is intended that the programme will offer a range of services, from comprehensive assessment and advice, one-to-one support for individuals and their families, evidence-based group programme designed to reduce alcohol use and prevent relapse.

Progress:

The Community Alcohol Programme commenced on 13th January 2020 and ran until 13th March. Due to Covid, the group ceased 2 weeks prior to completion however; we continued to provide one to one support over the phone on a weekly basis until completion of the programme and also in an aftercare capacity. We continue to work and support the individuals who accessed the pilot programme.

Since the programme commenced, participants have managed to maintain their sobriety and continue to progress in their recovery. One participant accessed an Alcohol Detox with Aiseri, in which we were successful in accessing funding from the HSE for. He then went on to Coolmine Treatment Centre and is still engaging well in the programme.

Geographic Area that will Benefit Tallaght and Whitechurch

Lead Organization - South Dublin County Partnership Company Ltd

Other Organisations involved in implementation – A new partnership arrangement has been developed for this action between South Dublin County Partnership, the Tallaght Drug and Alcohol Task Force, CARP (Killinarden), The Health Project (SDCC), HSE Alcohol Services (Kilnamanagh Primary Care Centre) & Tallaght Hospital. Tallaght Drug and Alcohol Task Force, South Dublin County Partnership, South Dublin County Council, CARP (Killinarden).

Action 3 - Physical Activity Challenge - €45,000 Programme costs split over two years.

Participants are challenged to complete 1 (or more if they wish) of the 5 Challenges outlined below. The Challenge will run from Jan to May 2020 and Jan to May 2021. It is anticipated that approx. 500 participants will complete the challenge. challenge are Running, Walking, Cycling, Swimming & exercise.

Geographic Area that will Benefit - SDCC Administrative Area

Lead Delivery Partner Organization – South Dublin Sports and Recreation

Other Organisations involved in implementation - South County Dublin County Council , South Dublin Leisure Services Ltd., Parkruns Ireland, Cycling Clubs



Progress:

There are 5 strands to the programme. Walking, running, swimming, cycling and indoor activities. All programs were operating to their full capacity and enjoyed throughout many communities in South Dublin. Covid 19 restrictions have delayed the progress of the program but it is envisaged that it will be completed through 2020 and early 2021.

Action 4 - Primary Schools Sports Coaching Programme - €17,000 Programme costs and tutors

Action Description:

Provide a wide sports programme offering that Primary Schools can avail of, thereby,

- **Allowing Children Access to high level coaching in various sports disciplines**
- **Providing Structured Coaching Programme Development for teachers in Physical Education**
- **Encouraging children to become involved with the coached sport at club level outside of school**

Geographic Area that will Benefit – All Schools in SDCC Administrative Area.

Lead Delivery Partner Organization – South Dublin Sports Partnership.

Other Organisations involved in implementation South Dublin County Sports partnership is an interagency group itself.- 45 Primary Schools in South Dublin - National Governing Bodies of a variety of Sports.

Community Mental Health Action €32,050 – split over two years to cover Programme costs and training

Action description

As per Healthy Ireland Framework, South Dublin County with a very high level of suicide amongst young women in the under thirty years age group. In South Dublin County suicide blackspots have been identified in North Clondalkin/ Balgaddy and in West Tallaght/ Glenshane. This action will increase the level of awareness of strategies that can be implemented that will increase community resilience in these areas. The actions will also sign post individual and communities to services and supports for those most in need. The action will support the Healthy Ireland Strategy, Connecting for Life Strategy and the South Dublin County Health and well Being Strategy. Action 31 South Dublin County Health Strategy; As Part of the wider resilience project SDCP will identify prospective members for the County Task Force for the reduction of numbers of suicides in South Dublin County. The action will also provide training for task force members to enhance their skills for the development of countywide strategy

Progress

- 5 National Governing Bodies (NGB's)
- 45 schools
- Over 6 thousand students involved
- Teacher training in 3 sports
- Building a good working relationship with the NGB's, Schools and Sports Partnership to get more kids active.



Geographic Area that will Benefit – North Clondalkin/ Balgaddy and west Tallaght and Glenshane

Lead Delivery Partner Organization – South Dublin County Partnership Limited

Other Organisations involved in implementation - HSE; Tusla; South Dublin County Council, SDCP Resilience Project, South County Dublin Heads Up Project; Neilstown Health House and Fettercairn Health Initiative along with a number of community organisations involved in health and Wellbeing

Resilience Project

Description

Conduct preliminary ground work regarding needs of women. Deliver evidenced based stress management workshops in collaboration with supporting agencies in community. Social media will be a strong strategy in communication and education. As Part of the wider resilience project SDCP will identify prospective members for the **'County Task Force for the Reduction of Numbers of Suicides in South Dublin County'**. The action will also provide training for task force members to enhance their skills for the development of countywide strategy. Such training will be aligned to connecting for life, the Healthy Ireland framework and best practice in the area of mental health. The action will allow for the review/investigation of international model such as that operating in the Netherlands and to explore possible adaption for the Irish context.



Progress

Resilience project:

140 consultation meetings took place, gathered data on the gaps in suicide prevention services and possible solutions by working together.

Oversight (Steering) committee set up, members agreed -4 meetings have taken place.

The Resilience Project identified members of the Suicide Prevention Task Force.

- 24 organisation representatives attended 2 facilitated meetings. Following which a third meeting of 18 organisations came together. Agreed two sub groups to progress awareness program and increase in community service provision.
- Mapping of local community directory identifying organisation who provide mental health, wellbeing, suicide prevention and/ critical incident management - provide copies to community, voluntary, statutory organisations. Web site and other social media being explored.

Community Mental Health Fund Action: Small Grants Scheme (LDCCs Only) €30,000

South Dublin County Council devised a small grants scheme in line with Departments guidelines and their existing range of Community Grants.

Community Engagement – €20,000 to Work with two existing community health projects in South Dublin to improve the overall community engagement with health at a county level. Plan two events within the county to promote and make people aware of the actions contained in the county strategy and the work that is going on.



Merchandise - €10,000 for the Purchase of Healthy County Merchandise,

Action	SDCC LCDC Application			
	2019/2020	2020/2021	2021/2022	Total
Action 1 Social Prescribing Project	€35,000.00	€30,000.00	€23,245.00	€88,245.00
Action 2 Alcohol Day Programme	€14,000.00	€13,000.00		€27,000.00
Action 3 Physical Activity Challenge	€20,000.00	€25,000.00		€45,000.00
Action 4 Physical Activity School Programme	€8,000.00	€9,000.00		€17,000.00
Community Engagement & Merchandise	€30,000.00			€30,000.00
Community Resilience Fund			€107,560.00	€107,560.00
Mental Health Action		€32,050.00		€32,050.00
Small Grant Scheme (Mental Health)		€30,000.00		€30,000.00
Over Total				€376,855.00



Appendices





Appendices

Appendix 1

South Dublin County LCDC membership and attendance 2021

Representative	Sector	10/02/21	07/04/21	16/06/21	15/09/21	03/11/21	08/12/21
Private							
Mary Corcoran	Community	P	P	P	P	P	P
Phil Mulvaney	Community	P	P	A	P	P	P
Tony Fegan	Community	A	P	A	A	A	A
Larry O'Neill	SDC Partnership	P	P	P	P	P	P
Tricia Nolan	PPN Community Pillar	P	P	P	P	P	P
Kattia Siles Tomney	PPN Community Pillar	P	P	A	A	A	A
Justin Byrne	PPN Environment Pillar	P	A	P	P	P	P
Jessica Conlon	PPN Social Inclusion Pillar	A	P	A	A	A	A
Bibiana Savin	PPN Social Inclusion Pillar	P	P	P	P	P	A
Andy Leeson	Youth Services	P	P	P	P	A	P
Public							
Cllr Kieran Mahon	Councillor	A	P	P	P	P	A
Cllr Alan Hayes	Councillor	P	P	P	A		P
Cllr David McManus	Councillor	P	P	P	A	P	A
Padraig Rehill	HSE	A	P	A	P	A	A
Margaret McQuillan	HSE	-	-	-	-	-	A
Deirdre McKeon	DDLETB	A	P	A	P	P	A
Marguerite Gallagher	DSP	P	A	-	-	-	-
Eugene Donnelly	DSP	-	-	P	P	A	P
Thomas Rooney	LEO	P	P	P	P	P	P
Colm Ward	SDCC	P	A	P	P	P	P
In Attendance							
Andy Lane	SDCC	P	P	A	P	P	P

P - Present A - Apologies given C - Absent conflict of interest



Appendices

Appendix 2

LCDC Subcommittees 2021

SICAP Oversight Subcommittee

- Mary P. Corcoran
- Cllr Alan Hayes
- Cllr Kieran Mahon
- Larry O'Neill

Funding Subcommittee

- Mary P. Corcoran
- Cllr Kieran Mahon
- Tricia Nolan
- Phil Mulvaney
- Deirdre McKeon

Strategy & Planning Subcommittee

- Mary P. Corcoran
- Phil Mulvaney
- Tony Fegan
- Bibiana Savin



Appendices

Appendix 3

Local Community Development Committee Funding 2017 - 2020

Funding	Source	Conduit	App. Closing Date	Funding Available	Projects Funded	Current Status
2017						
Communities Facilities Fund	DRCD	LCDC	30.06.17	€64,500	70	Funding allocated
Healthy Ireland Fund 2017	DOH	LCDC	15.09.17	€97,603	8	Funding allocated
RAPID Capital Grants Programme	DRCD	LCDC	24.11.17	€64,500	2	Funding allocated
2018						
Healthy Ireland Fund 2018	DOH	LCDC	25.05.18	€75,000	6	Funding allocated, reporting completed, awaiting final 10%
Community Enhancement Programme	DRCD	LCDC	31.07.18	€169,399	58	Funding allocated
Community Enhancement Programme (Men's Sheds)	DRCD	LCDC	31.08.18	€14,492	9	Funding allocated
Community Enhancement Programme (Additional Funding)	DRCD	LCDC	09.11.18	€568,301	61	Funding allocated
2019						
Healthy Ireland Fund 2019- 2020	DOH	LCDC		€246,050.00		Commencing Jan 2020
Community Enhancement Programme	DRCD	LCDC		€169,399		Funding allocated
Community Enhancement Programme (Men's Sheds)	DRCD	LCDC		€15,707 €18,405.98 paid out	11	Funding allocated
Community Enhancement Programme (Men's Sheds)	DRCD	LCDC		€15,707 €18,405.98 paid out	11	Funding allocated
2020						
Community Enhancement Programme Round 1	DRCD	LCDC		€81,018,75	42	Funding allocated
Community Enhancement Programme Round 2	DRCD	LCDC		€282,444.09	36	Funding allocated



Appendices

Appendix 4

2021 LCDC Funding Allocations:

Community Enhancement Programme 2021

Group /Organisation	Electoral Area	Amount Awarded by LCDC	Purpose of Grant & Funding
Fettercairn Community and Youth Centre	Tallaght South	€6,600.00	Electrical Repairs, Drain Repairs, Tables, Chairs, Projector and Fire Alarm.
Retired Active Men's Social (RAMs)	Clondalkin	€1,000.00	Fridge, Coffee Maker and Storage Boxes
Walkinstown Greenhills Resource Centre	Rathfarnham/ Templeogue	€1,000.00	Upgrade access to attic area
Boom Variety Stage School	Clondalkin	€758.00	New Speakers and Floor Mats
Rowlagh Women's Group	Fonthill/Palmerstown	€1,000.00	Materials and Labour Costs to divide training room.
Ronanstown Women's Community Development Project	Fonthill/Palmerstown	€1,000.00	Upgrade Office Flooring
Anam Cara Parental & Sibling Bereavement Support	Tallaght Central	€1,000.00	Laptop, keyboard, mouse, monitor and docking station
Saggart Village Residents Association	Tallaght South	€1,000.00	Upgrade of under sink heaters and hand dryers.
Acquired Brain Injury Ireland	County-Wide	€3,000.00	Redevelopment of Garden Space
Glenasmole Community Association	Firhouse/ Bohernabreena	€9,327.00	Intruder Alarms System CCTV Installation, DVD Recorder Kitchen Appliances
Near le Chéile -Cumas agus Cairdeas	Fonthill/Palmerstown	€315.00	Printer



Appendices

Appendix 4

2021 LCDC Funding Allocations:

Community Enhancement Programme 2021

Group /Organisation	Electoral Area	Amount Awarded by LCDC	Purpose of Grant & Funding
Lucan South (180th) Scout Group (The Bush Scout & Community Centre)	Lucan	€1,346.00	Picnic Benches, Paving Slabs and Paving Materials
Fettercairn Community Enterprise Company Ltd.	Tallaght South	€4,000.00	Two Picto Three Burner Fryers
Garda Volleyball Club	Tallaght Central	€1,000.00	Heart on A15 Defibrillator with Cabinet
Clondalkin Adult Morning Education (CAME)	Clondalkin	€700.00	Air Purifier, Printer/Copier
Muintir Chrónáin, Áras Chrónáin Ionad Cultúir	Clondalkin	€35,000.00	Roof Repairs, Drain & Gutter repairs, Refurbish and Repair Windows, Repair Office Space
Glenanne Sports Club	Tallaght South	€4,000.00	Power connection. Shelving and Storage
Newcastle Lyons Development Trust	Clondalkin	€825.00	Carpet, Timber for work top extension.
School Completion Programme	Tallaght South	€10,000.00	Tarmac Basketball area, court lining, poles and nets.
Women Together Tallaght Network	Tallaght South	€600.00	Purchase and Installation of New Blinds and sensor light.
Rathcoole Community Council Ltd.	Clondalkin	€10,000.00	Replacement of Existing Fire Alarm
Clondalkin Men's Shed	Clondalkin	€600.00	Smart Tablet, Bluetooth Printer and sundries.



Appendices

Appendix 4

2021 LCDC Funding Allocations:

Community Enhancement Programme 2021

Group /Organisation	Electoral Area	Amount Awarded by LCDC	Purpose of Grant & Funding
ACE Enterprise Park	Clondalkin	€11,650.00	Secure Access Controlled Pedestrian Gate and Air Quality Monitors & Filtration System.
Quarryvale Community and Leisure Centre	Fonthill/Palmerstown	€3,000.00	Community Mural – supplies and labour.
The Park Community Centre	Firhouse/ Bohernabreena	€1,844.00	Bowling Mat Trolley, Foot Mats and measuring tapes
Fettercairn Youth Horse Project	Tallaght South	€13,000.00	Quad
Liffey Sounds Communication Cooperative Ltd.	Lucan	€958.00	Upgrade IT systems
Rua Red South Dublin Arts Centre	Tallaght Central	€29,000.00	Music Room Equipment
Round Towers GAA Club	Clondalkin	€8,750.00	Goal Posts, Nets, Flags for the Juvenile Section of the Club.
Irish Girl Guides	Tallaght Central	€1,168.00	Window Manistafaction
Ballyroan Foroige Club	Rathfarnham/ Templeogue	€1,284.00	Bluetooth speakers, IPAD, Projector, Trampoline, Beanbag, Table Tennis Table, various toys and games.
Belgard Community and Youth Centre	Tallaght Central	€6,000.00	Studio Mirrors, Blinds, Upgrade of Kitchen and storage and new floor in the dance studio
Clondalkin Men's Shed	Clondalkin	€600.00	Smart Tablet, Bluetooth Printer and sundries.



Appendices

Appendix 5

2021 LCDC Funding Allocations:

Community Enhancement Covid 19 Emergency Funding Programme 2021

Group /Organisation	Electoral Area	Amount Awarded by LCDC	Purpose of Grant & Funding
St. Dominic's Community Response Project CLG	Tallaght Central	€1,000.00	PPE and Protective Equipment
Croi Ro Naofa GAA Club	Tallaght South	€1,500.00	Jersey's, Balls and Training Tops
South Dublin County Volunteer Centre	Tallaght Central	€5,000.00	Hoodies and T-Shirts for Volunteers
The Rights Platform	Tallaght Central	€1,050.00	6-part Introduction to Community Development course.
St. Martins Residents Association	Tallaght Central	€500.00	Funding to improve local area such as tree planting, signage, newsletter.
Ballyroan Community and Youth Centre	Rathfarnham/	€4,000.00	Power connection. Shelving and Storage
Templeogue	€3,542.00	Upgrade of Office to include partitions, desks, chairs and electrical works.	Carpet, Timber for work top extension
New Hope Residential Centre	Tallaght South	€1,720.00	Purchase IT equipment and Sanitizing stations
Near le Chéile - Cumas agus Cairdeas	Fonthill/Palmerstown	€920.00	Air Purifier and data for staff phones
St. Kevin's Family Resource Centre	Tallaght Central	€1,500.00	Million Stars project: We are launching our involvement with this creative international project, raising awareness of domestic violence – Website development
Quarryvale Community and Leisure Centre	Fonthill/Palmerstown	€979.08	Shelving System
Quarryvale Family Resource Centre	Fonthill/Palmerstown	€12,000.00	Child and Adult therapist
Friends of the Camac	Clondalkin	€1,000.00	Insurance, Website and Newsletters
Fettercairn Community Enterprise Company Ltd.	Tallaght South	€2,000.00	Contribution towards Rent Costs
Dublin Rape Crisis Centre	Tallaght Central	€2,900.00	Therapists (one-to-one sessions), Counsellors (telephone "check ins"), Supervision to support remote staff, Telephone/broadband charges, Tech hardware and support.



Appendices

Appendix 5

2021 LCDC Funding Allocations:

Community Enhancement Covid 19 Emergency Funding Programme 2021

Group /Organisation	Electoral Area	Amount Awarded by LCDC	Purpose of Grant & Funding
An Cosan	Tallaght South	€1,000.00	Purchase IT Equipment
An Cosan	Tallaght South	€4,912.00	Purchase IT Equipment
An Cosan	Tallaght South	€1,000.00	Purchase IT Equipment
Clondalkin Women's Network	Clondalkin	€1,000.00	Yoga Tutor and Art Therapist
Rathcoole Community Council Ltd.	Clondalkin	€2,000.00	Sanitizer Stations, Wall mounted thermometers, Clocking machines and Divider Screens
St. Finian's GAA Club Newcastle	Clondalkin	€400.00	Covid Information Posters and Hand Sanitizer Stations
Cool Stars Kids Club	Lucan	€1,000.00	Purchase IT and Art Equipment
St. Ronan's National School	St. Ronan's National School	€5,560	Upgrade Running Track
Killinarden Community Council	Tallaght South	€1,950.00	Purchase IT equipment - Food cloud & Easter eggs
Firhouse Men's Shed	Firhouse/ Bohernabreena	€2,500.00	Construction of Boules Facility
Glenasmole Community Association	Firhouse/ Bohernabreena	€1,210.00	To provide health and wellbeing care packages for our Active Age members; 2.) To purchase screens which will ensure greater safety in respect of Covid and facilitate physical attendance when our community center reopens.
Clondalkin Centre for the Unemployed CLG T/a CEEDS	Fonthill/Palmerstown	€2,000.00	Utility Bills
Castle Park Residents Association Clondalkin	Clondalkin	€1,350.00	Plants/Shrubs, Tools, Paint, Ongoing hedge and grass maintenance and Tea Party
Tallaght Community Council	Tallaght Central	€3,110.00	Cast Iron Sign



Appendices

Appendix 6

2021 LCDC Funding Allocations:

Social Enterprise Capital Grants Scheme 2021

Group /Organisation	Electoral Area	Amount Awarded by LCDC	Purpose of Grant & Funding
ReCreate		€6,298	Social Enterprise Grant
Aras Chronain Ionaid Cultuir		€15,000	Social Enterprise Grant
Action Community Enterprise		€15,000	Social Enterprise Grant
Lucan Disability Action Group		€9,273.73	Social Enterprise Grant
Knockmitten Youth & Community Association		€3,628	Social Enterprise Grant
Belgard Community Centre		€2,428	Social Enterprise Grant
Fettercairn Community & Youth Centre		€2,500	Social Enterprise Grant





Appendices

Appendix 7

LEADER Projects:

Projects in South Dublin County have progressed in 2021

Description: May 2021 End of the LEADER 2014-2020 Programme	County Split - Projects Approved			
May 2021	Fingal	DLR	SD	Food Initiative
Projects	65	6	17	3
Percentage	73.85%	6,82%	19.32%	
Value of Projects	€3,162,824.06	€324,735.83	€1,302,918.69	€358,907.40
% by value	66.02%	6.78%	27.20%	
Note: Projects with contracts received 89				
3 approved projects from -Food Initiative				
Percentage of Rural Area Population as per LDS: Fingal-67%; DLR-8%; SD-25%				

Transition LEADER Programme Commenced April 1st, 2021 & runs until December 31st, 2022

Total projects funds available = €1,411,631

County Split				
Description: Transition Programme April 2021 – Dec 2021	County Split - Projects Approved LEADER Transitional Programme & EURI			
	Fingal	DLR	SD	EURI
Number of Projects	13	1	1	1
% by No of Projects	86.67%	6.67%	6.67%	
Value of Projects	€570,547.28	€48,036.03	€33,204.62	€24,063.75
% by value	87.54	7.37	5.09	
Note: Projects with contracts received Transitional Programme-15				
EURI - Projects approved-1				

As well as the 1 project above there were 2 Environmental Training Programmes Projects approved which will be rolled out across all 3 geographic areas:

- Introductory Training in Renewable Energy Technologies in County Dublin -€19,300 value
- Caring for Water Training Programme in County Dublin - €49,990 value



Appendices

Appendix 7

LEADER Projects:

Projects in South Dublin County have progressed in 2021

South Dublin County live projects					
Date	Projects	Eol Stage	Stag 2-10	LAG Agreed	Complete (95%+)
January 2019	22	4	8	10	0
November 2019	29 +2*	3+2*	12	5	9
February 2020	31+2*	3+1*	13+1*	5	10
December 2020	25+2*	0	9 +1*	4+1*	12
March 2021	22+1*	1	1	7+1*	13
November 2021	21 + 2*	2	0	0	14

* DLR/Fingal/SDC project





Appendices

Appendix 7

LEADER Projects:

The following community projects were substantially completed by the end of 2021:

Operational Area	Project Name	Contract Signed by Promoter Date	Project Completion to Date % End of 2021	Amount Approved by LAG
South Dublin - Rathcoole	Calliaghstown Equestrian Centre Upgrade	06/09/2018	100%	€24,210.25
South Dublin - Newcastle	Colin Harris Business Development	13/10/2017	100%	€10,818.00
South Dublin - Newcastle	Colin Harris Design Ireland Product Launch	10/12/2018	100%	€3,747.18
South Dublin - Newcastle	Development of Typing Tutor Program Prototype	03/05/2019	100%	€30,000.00
South Dublin - Newcastle	Equipment for Harris Turf Improvement Phase 2	25/07/2019	100%	€37,183.00
South Dublin - Saggart	Expansion of Activities and Equipment for Slade Valley Men's Shed	20/04/2018	100%	€20,548.50
South Dublin- Balinascorney	Footee Expansion & Upgrade	16/04/2018	99%	€11,318.50
South Dublin- Balinascorney	Footee Ireland Equipment	01/06/2021	85%	€33,204.62
South Dublin - Bohernabreena	Glenasmole Community Centre	18/10/2017	100%	€9,840.00
South Dublin - Bohernabreena	Glenasmole Community Centre Facility Upgrade	12/11/2020	25%	€500,000.00
South Dublin - Newcastle	Purchase of New Equipment for Harris Turf Improvements	06/03/2019	100%	€22,875.00
South Dublin - Newcastle	RAMS in Rhythm	18/04/2018	100%	€3,696.00
South Dublin- Bohernabreena	Rosanna Hall Renovation	09/10/2017	100%	€19,804.39
South Dublin - Saggart	Saggart School House Community Care	18/12/2020	0%	€500,000.00
South Dublin - Saggart	Saggart Village Residents Rural Challenge	12/12/2018	99%	€5,904.00
South Dublin - Ballinascorney	St Martin's Ballinascorney Community Facility Master plan	18/04/2018	100%	€19,704.60
South Dublin - Rathcoole	The Artisan Pizza Company Ltd Business Expansion Plan 2020	18/05/2020	100%	€104,395.90
South Dublin - Newcastle	The Newcastle Lyons Heritage Trail Project	10/12/2020	50%	€23,010.99
South Dublin - Saggart	Upgrade of St Mary's GFC Facility	07/09/2018	75%	€60,258.28



Appendices

Appendix 8

Community Actions under Local Economic and Community Plan 2016-2021

This plan represents the strategic vision for the development of the community and the economy of South Dublin County. There are 7 economic high - level goals, and 7 community high level goals which are reported on by the LCDC:

- Goal 8:** Empower our communities to improve their health and wellbeing and quality of life by providing relevant information and accessibility to quality services
- Goal 9:** Protect and enhance our environment by providing information that is accessible to all and applying the principles of sustainable development
- Goal 10:** Reduce poverty, social exclusion and disadvantage, and improve levels of income for disadvantaged communities, including children and families
- Goal 11:** Continue to improve opportunities for our people to participate in life-long learning opportunities
- Goal 12:** Develop and empower our local workforce through improving skills and increasing the accessibility of further educational opportunities
- Goal 13:** Support our communities to influence decisions that matter in their areas and lives and encourage political, economic and cultural citizenship
- Goal 14:** Strengthen connections, cooperation and coordination between service providers, and between service providers and communities

Glossary

Phrase or Acronym	Translation	Explanation
The Act		The Local Government Reform Act 2014
AIRO		All-Island Research Observatory (Maynooth University)
BTWEA	Back to Work Enterprise Allowance	
CCMA	County and City Manager's Association	
CDP	Community Development Project	
Chief Officer		The person appointed by the Chief Executive of the Local Authority to assist the LCDC and manage the business of the Committee.
CEP	Community Enhancement Programme	(Funding) New scheme in 2018
CFS	Communities Facilities Fund (Funding)	
CIF	Community Initiative Fund (Funding)	
Clondalkin Travellers DG (CTDG)	Clondalkin Travellers Development Group	
CPG	Corporate Policy Group	
CYPSC	Children & Young People's Services Committee	Have Memorandum of Understanding with LCDC
DEIS	Delivering Equality of Opportunity in Schools	



Glossary

Phrase or Acronym	Translation	Explanation
DEASP	Department of Employment Affairs and Social Protection	
DoH	Department of Health	
Department or DRCD	Department of Rural & Community Development	To provide a renewed and consolidated focus on rural and community development in Ireland. <ul style="list-style-type: none"> • Source of funding for LCDP programmes • Provides policy framework Enacts Government policy
ECCE	Early Childhood Care and Education	
EMRA	Eastern and Midlands Regional Assembly	
EPA	Environmental Protection Agency	
ESF	European Social Fund	The main financial instrument for supporting employment in the member states of the European Union as well as promoting economic and social cohesion. <ul style="list-style-type: none"> • Supports the SICAP programme with EU funding
ESRI	Economic and Social Research Institute	
ETB	Education & Training Board	
EU	European Union	
Functional area of a Committee		The administrative area of South Dublin County Council.
FRC	Family Resource Centre	
HSDSG	Healthy South Dublin Strategy Group	Developing Memorandum of Understanding with LCDC
HSE	Health Services Executive	
ICT	Information and Communications Technology	
IHREC	Irish Human Rights and Equality Commission	Ireland's national human rights institution and national equality body.
ILDN	Irish Local Development Network	The representative body for the country's Local Development Companies who deliver RDP LEADER, Social Inclusion Community Activation Programme, Rural Social Scheme, Tús, Local Employment Service, Jobs Clubs, Rural Recreation Programme, The Walks Scheme, Back to Work Enterprise Allowance and social enterprise programmes across rural and urban Ireland.
IRIS	Integrated Reporting and Information System	Pobal computer system for managing the SICAP programme
JPC	Joint Policing Committee	Have Memorandum of Understanding with LCDC
KPI		Key Performance Indicator
LAG	LEADER Advisory Group	
LCDC	Local Community Development Committee	



Glossary

Phrase or Acronym	Translation	Explanation
LCDP	Local Community Development Programme	Any action, intervention, programme, scheme or any other support, financial or otherwise, which is concerned with promoting the interests of local communities.
LCG	Local Community Group	
LDC	Local Development Company	The company that delivers the SICAP programme usually and area-based Partnership company
LEADER	Liaison Entre Actions de Développement	
de l'Économie Rurale	LEADER is a French acronym that roughly translates as 'Liaison among Actors in Rural Economic Development.'	
LECP	Local Economic and Community Plan	A 6-year plan jointly agreed by the LCDC and Economic SPC
LEO		Local Enterprise Office
LGAS	Local Government Audit Service	
LGMA	Local Government Manager's Association	
MOU	Memorandum of Understanding	An agreement between two (bilateral) or more (multilateral) parties. It expresses a convergence of will between the parties, indicating an intended common line of action.
NEET	Not in Employment, Education or Training	
NESC	National Economic & Social Council	
NOSP	National Office for Suicide Prevention	
NUI Maynooth	National University of Ireland, Maynooth	
PEIL	Programme for Employability, Inclusion and Learning	The Programme for Employability, Inclusion and Learning 2014-2020 is co-funded by the Government of Ireland and the ESF with a special allocation from the Youth Employment Initiative.
PI	Programme Implementer SICAP programme	The Local Development Company (LDC) who delivers the
Plan Pobal		The 6 year Local Economic and Community Plan Pobal acts as an intermediary for programmes funded by the Irish Government and the EU by supporting groups and communities that are applying for, or receiving, funding for specific programmes. In practical terms, this can involve assessing funding applications, providing support, checking financial returns, processing payments, and auditing to ensure funds are used for the intended purposes.
Publicly funded body		A body whose funds, directly or indirectly and in whole or in part, come out of moneys provided by the Oireachtas for the purpose of performing its functions.



Glossary

Phrase or Acronym	Translation	Explanation
PPN	The Public Participation Network	The South Dublin County Public Participation Network (PPN) is the representative, collective voice of community & voluntary, environmental and social inclusion organisations in South Dublin County. Resident Association
RA RACI	Responsible, Accountable, Consulted, Informed	Responsibility assignment matrix: RACI is an acronym derived from the four key responsibilities most typically used: Responsible, Accountable, Consulted, and Informed.
RAPID	Revitalising Areas by Planning, Investment and Development	Programme ran from 2002-2012. A new programme was introduced in 2017 with the RAPID Funding Scheme
Rathcoole EGF		Rathcoole European Globalisation Fund
Representatives of local community interests		In relation to the functional area of a Committee, means persons who are representative of community interests that are concerned with promoting the development of aspects of those interests within that area and such representatives may include representatives of non-governmental organisations, development agencies, community based groups, recognised associations, cultural bodies, sporting bodies and social movements and networks.
SEAI	Sustainable Energy Authority of Ireland	
SDCC	South Dublin County Council	
SDC Partnership	South Dublin County Partnership	
SDC Volunteer Centre	South Dublin County Volunteer Centre	
SICAP	Social Inclusion and Community Activation Programme	
SME	Small and medium sized enterprise	
SPC	Strategic Policy Committee	To formulate, develop, monitor and review policies which relate to the functions of South Dublin County Council and to advise the Council accordingly <ul style="list-style-type: none"> • Economic SPC agreed LECP • Community SPC deals with community related issues of SDCC
Standing Orders		The Rules of Debate, the Agenda, and any "local" rules concerning the conduct of the meeting are loosely referred to as "Standing Orders."
TU Dublin	Technological University Dublin	Previously the Institute of Technology Tallaght
Tusla		The Child & Family Agency





Address: LCDCC
Housing, Social & Community Development Department
South Dublin County Council
County Hall
Tallaght
Dublin 24
D24 A3XC

Web: [https://sdcc.ie/en/services/community/local-community-development-committee/](https://sdcc.ie/en/services/community/local-community-development-committee/comdevof@sdblincoco.ie)
Email: comdevof@sdblincoco.ie

Telephone: 01-414-9000