



Comhairle Contae  
Átha Cliath Theas  
South Dublin County Council



October 2020

# Chief Executive's Report

Culture Night in Rua Red

# About the Chief Executive's Report

South Dublin County Council's Chief Executive's Report is presented to elected members at Council every month and details important achievements across our various departments whilst highlighting key statistics and images from events that took place that month.

The report also highlights major news pieces and puts a focus on an area of the Council that doesn't always get the attention it deserves.

# Contents



## 04 LUPT

Highlights from Land Use Planning and Transportation.



## 06 HOUSING SOCIAL AND COMMUNITY DEVELOPMENT



## 08 ECONOMIC ENTERPRISE AND TOURISM DEVELOPMENT

22

## Statistics Report



24

## Finance Report

25

## Images of the Month

## Features

### 14 COVID-19 UPDATE

The Council maintained services during the Level 3 restrictions for Dublin.

### 16 GREEN FLAG AWARDS

Five Council parks were recently awarded Green Flags by An Taisce..

### 18 INFRASTRUCTURE UPGRADES

Work has commenced on a €20m infrastructure upgrade at the Adamstown Strategic Development Zone.

### 20 COUNCIL FOCUS

A look at the Council's new Age-Friendly strategy.



## 10 CORPORATE PERFORMANCE AND CHANGE MANAGEMENT



## 12 ENVIRONMENT WATER AND CLIMATE CHANGE



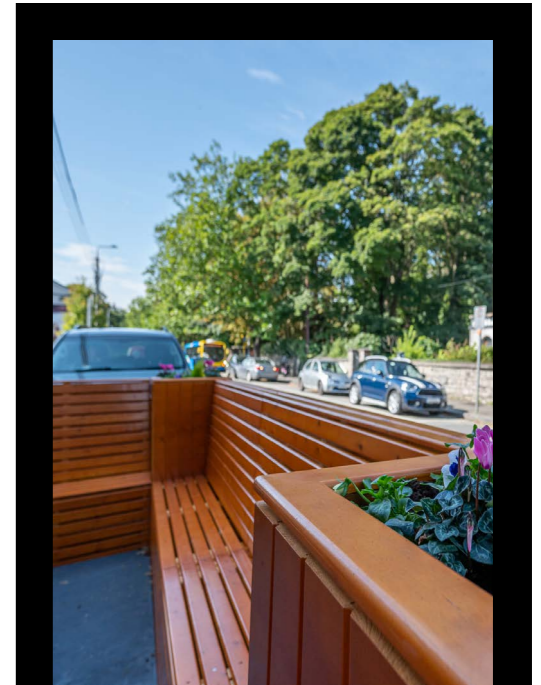
# LAND USE PLANNING AND TRANSPORTATION



## N81 Cycle Scheme

The N81 Cycle Scheme involves the upgrade of cycling and pedestrian infrastructure together with landscaping works along the N81 between the existing signalised pedestrian crossing located between Killinarden Heights Junction and the Outer Ring Road Junction and the entrance into Kiltalown Park.

The scheme combines two Part 8s, one for the N81 to N82 Cycle Scheme approved in 2014 and the second for the N81 Landscape Scheme approved in March 2017. Tenders have now been returned and works are expected to start on site in Autumn 2020. The scheme will include works to provide a new off-road 2-way cycle track; construction of footpaths through the open green space; pedestrian and cyclist safety improvement works; improvements to the existing bus stops along the route including bus bays; drainage and light improvements and three hectares of landscaping improvements.



## Parklet Trial in Lucan Village

A new public parklet has been installed in Lucan Village outside the Riverside Café. The parklet will be in place as a trial for three months. During this time the officers will monitor it to determine if the Parklet is well used, if it brings benefits to local businesses, if it creates any anti-social behaviour and if permanent parklets could be rolled out across the County.

## County Development Plan

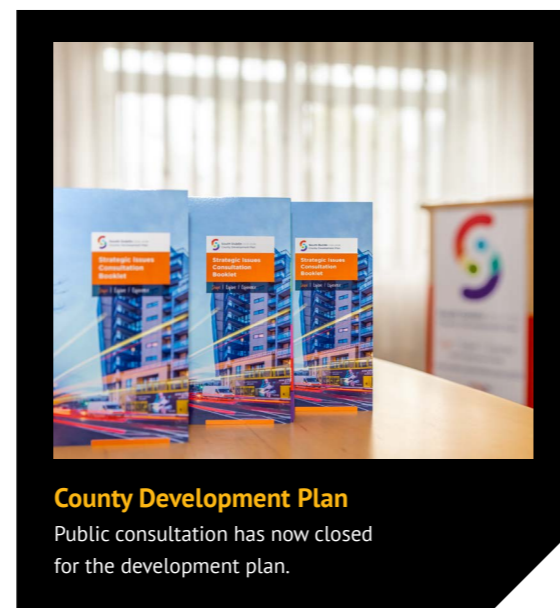
Public consultation on the new County Development Plan 2022-2028 closed on 28 September. The team had to overcome some challenging COVID-19 restrictions to carry out robust public engagement.

During the consultation the Council opened a dedicated website and a 'virtual room' which mimicked a meeting hall with the opportunity for direct calls to the planners. There were two public webinars that had over 100 guests and we used social media to promote the plan and seek input. In addition to a meeting in Tallaght Library, the public were also encouraged to have face to face meetings with planners by appointment and by

phone.

Posters were put up for four weeks at over 25 bus shelters and an art competition for children is still underway. In addition, the team held seven stakeholder consultations that were well attended by key state bodies, landowners and the public.

There has been approximately 220 submissions received which is nearly double what was received at the same stage of consultation for the last Development Plan. A report will now be prepared based on the submissions and consultations. This will issue to elected members by 19 November and will inform any strategic directions that the members may issue for the preparation of the draft plan in early February.



## Naas Road Masterplan

The Naas Road area is nearly 700 hectares of land on the eastern bound of South Dublin County that borders with Dublin City. The two Councils are now working together and have appointed a multi-disciplinary consultancy team, led by Maccreanor Lavington, to prepare a masterplan for the Naas Road lands. This is an 18-month process comprised of two stages. Stage 1 includes a 'visioning workshop' with elected members and involves the preparation of a baseline of the current situation by the end of this year while Stage 2 involves the preparation of a non-statutory masterplan by late 2021.



*Works are due to commence on the N81 Cycle Scheme.*



# HOUSING SOCIAL AND COMMUNITY DEVELOPMENT



## Maintenance Programme

A significant planned maintenance programme has now commenced having been delayed due to COVID-19 restrictions. The programme primarily involves replacement of older windows and doors in our housing stock along with a painting programme and focused works for certain estates and in communal areas of multi-household developments. All works programmes have been revised to accommodate social distancing and other public health and safety requirements.

The Accelerated Windows and Doors Programme will see projected expenditure of €1.6million in 2020 with works scheduled for 200 homes. Works scheduled for multi-unit developments will see the replacement of door/screen/windows as necessary in communal areas in the MacUilliam and Balgaddy estates.

Details on other works, including the Painting Programme, Energy Retro-Fit Reports and the Boiler Servicing Programme, can be found at the [www.sdcc.ie](http://www.sdcc.ie) news section.



## Corkagh Grange Housing

The Council, in collaboration with Comhar Housing and Oaklee Housing, is close to finalising 109 new homes at Corkagh Grange as part of the Social Housing Public Private Partnership project. The development includes a mix of 30 apartments (15 one-bed and 15 two-bed homes) and 79 homes (71 three-bed and 8 four-bed) that are due to be ready for households to take up residency from early November.

## New Integrated Housing System

The Council will launch a new Integrated Housing System (IHS) at the end of October. This is part of our ongoing digital transformation to provide the best possible service to our citizens. The launch will be the accumulation of over two years of work by a dedicated project team.

The IHS will bring many benefits to citizens, customers, staff and the organisation as a whole. The system has an online self-service area that is fully mobile responsive so housing customers will be able to self-serve 24/7 on any device. Housing applicants and tenants can submit online application forms and will be able to send messages and update their details directly.

Tenants will be able to view all their accounts with the housing department as well as submit and track repair requests anytime.

Choice Based Letting (CBL) access on the new system will allow for a quick review of submitted expressions of interest. CBL along with the 'my account' feature will be available at the end of October with the remaining service areas following soon after.

Once fully introduced, the new system will improve our service to customers and our support to stakeholders, especially our local Elected Members and will benefit staff and the Council generally with improved reporting, real-time information and more flexibility supporting enhanced and faster decision making.



## Integrated Housing System

The Council's new housing system launches at the end of October.

## Community Grants

Applications for South Dublin County Council's 2020 Community Grants programme can now be made online. This programme aims to support community and voluntary groups in responding to locally identified needs within their communities. Grants will operate on rolling basis with monthly assessment/payment for the remainder of 2020.

Full details on and access to the online application portal, developed with the support of South Dublin Volunteer Centre, can be found on the Council's website by searching for Community Grants.



*Community Grant applications are now open.*



# ECONOMIC ENTERPRISE AND TOURISM DEVELOPMENT



## Women's Enterprise Day

National Women's Enterprise Day 2020 will move online on Wednesday, 14 October! "We're stronger together" is the message from the Local Enterprise Office at the announcement of events to mark National Women's Enterprise Day.

As COVID-19 restrictions continue, key themes of resilience, self-care, innovation and opportunity feature under the 'Stronger Together' message. Entrepreneurs that will be sharing their insights and journeys include Olympian-turned-company founder Derval O'Rourke, Sonia Deasy of the Irish global skincare brand, Pestle & Mortar, Pamela Laird of Moxi Loves who was a finalist on BBC's The Apprentice and Áine Kerr, the co-founder of Kinzen and RTÉ broadcaster, who is also the MC for the day.

Find out more at [www.localenterprise.ie/SouthDublin/Training-Events/NWED](http://www.localenterprise.ie/SouthDublin/Training-Events/NWED).



## Brexit Workshops

The Local Enterprise Office South Dublin have linked up with KGH Custom Services to provide workshops in trade and customs procedures, particularly in the context of the UK leaving the European Union. The workshop is organized into four sessions, each lasting approximately 45 minutes. Book your place at <http://www.localenterprise.ie/SouthDublin>.

## Joe Caslin's Reset at Culture Night

On Culture Night, a powerful new collaborative piece of contemporary art was launched online and on the outside of the Rua Red South Dublin Arts Centre. Reset by artist, educator and activist Joe Caslin and a group of young people from South Dublin County takes the form of a large-scale black and white drawing installed on the main wall of Rua Red facing The Square shopping centre in Tallaght.

This installation is the second part of a collaboration between Caslin and the young people, which reflects their thoughts and fears as they have navigated their way through the last six months of the COVID-19 pandemic.

Reset's online launch also featured a documentary film capturing the story of the project, the voices of the young people, and a series of music and spoken word performances from some of Ireland's foremost artists.

The artwork and film offer audiences an insight into the young people's experiences of the pandemic, while also giving the people of South Dublin County a much needed uplifting cultural experience in what has been a very difficult year.

This project was supported by Dublin Port Company, the Creative Ireland Programme, South Dublin County Council and The Arts Council.



## Culture Night at Rua Red

Joe Caslin's latest project was launched at the Rua Red South Dublin Arts Centre.

## Red Line Book Festival

The Red Line Book Festival launched its blended programme of events, taking place both online and offline, in venues around South Dublin County.

An initiative of South Dublin Libraries, the Red Line Book Festival has returned with an ambitious programme. Immerse yourself in conversations, stories and workshops virtually and in-person, from some of the biggest Irish and international names in literature.

View listings and book tickets at [www.redlinebookfestival.ie](http://www.redlinebookfestival.ie).



Red Line Book Festival





# CORPORATE PERFORMANCE AND CHANGE MANAGEMENT

## Make Way Day 2020

South Dublin County Council held a virtual discussion on access issues on Friday 25 September to celebrate Make Way Day 2020.

Make Way Day is a National Public Awareness Campaign to highlight the issues disabled people face getting around their local communities. "Hey, this blocks my way!" is the message. This initiative was created by and is managed nationally by, Disability Federation Ireland (DFI).

South Dublin County Mayor, Councillor Ed O'Brien, chaired the online discussion which included senior staff from South Dublin County Council's Housing, Social and Community Development Directorate and the Land Use, Planning and Transportation Directorate.



## Social Media Impressions

Social media posts by the Council have been seen over 11 million times so far in 2020. This figure is over 60% more than was seen during the same timeframe in 2019 and over 148% more than during a comparable timeframe in 2018.

The Council uses Twitter, Facebook, Instagram and LinkedIn to reach our citizens and promote our County.

## South Dublin County Council to Launch JAM Card Initiative

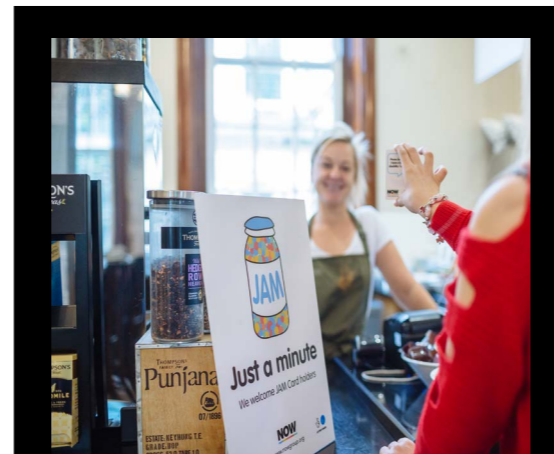
South Dublin County Council is to become the first local authority in the Republic to become JAM Card Friendly. Mayor Ed O'Brien will launch the initiative on 13 October in County Hall, Tallaght.

For those with a learning difficulty, autism, Asperger's or any condition where there can be a communication barrier, the JAM Card allows users to relay to others that they may need a little extra time in a simple, effective non-verbal manner.

The JAM Card is useful when on public transport, in a retail or any other customer-facing environment

and helps make JAM Card holders' experience as stress-free as possible.

The JAM Card was created by NOW Group, a social enterprise that supports people with learning difficulties and autism into jobs with a future and their service users told them that they would like a way to relay to people that they need a little extra time or patience.



### JAM Card Launch

South Dublin County Council will become the first local authority in the Republic to become JAM Card

## Out at Work Conference

The Council's LGBTQ+ Staff Network and Dublin City Council's LGBTQ+ Staff Network hosted an "Out at Work" virtual Conference on Wednesday, 30 September. This event was the second collaboration between both LGBTQ+ Networks (Digital Pride in June was the first), and its purpose is to encourage the support of LGBTQ+ inclusivity in the workplace.

The conference involved some members of both Council's LGBTQ+ Committees about their experience and challenges to coming out / being out in work.



The Council's LGBTQ+ Staff Network was launched in 2018.



# ENVIRONMENT WATER AND CLIMATE CHANGE



## Bulbs not Bonfires

The Council wishes to reward communities signed up to the Social Credits Scheme through the provision of spring bulbs and free passes to Ballymount during the Halloween period.

The Bulbs not Bonfires initiative provides communities with flowers in the Spring instead of scarred open space throughout the year. Last year we spent €2400 on bulbs for this popular scheme and similar will be spent again this year. Free passes to Ballymount Civic Amenity Centre are provided to every Social Credit applicant/ group. One pass allows entry for one car and will be valid from 12th October until 9th November 2020. Last year a total of 86 passes were provided.

In 2019 the Council spent in the region of €150,000 on clean-up operations associated with the 226 bonfires which took place. Just think what this kind of money could provide for YOUR community. For more information please contact the office at [envawareness@sdblincoco.ie](mailto:envawareness@sdblincoco.ie).



## New Sand-Based Pitches

On Thursday 24 September, the Mayor of South Dublin County, Cllr Ed O'Brien officially opened two new sand-based pitches at Tymon Park. The two sand-based sports pitches are among the first of their kind to be built by the Council. Sand based pitches are specifically designed to cater for high use and support the Council's objectives regarding delivery of active recreation.

## Improving Our Public Spaces

South Dublin County Council spends approximately €1m each year on a programme of minor improvement works which are carried out in parks and public open spaces around the County. A list of 53 schemes have been approved by the elected members of the Council for funding in 2020. The following are examples of some of the schemes;

In July, a pollinator friendly wildflower and bulb mix was sown at the focal point of Firhouse Village (main picture above). The mix was chosen to provide food for pollinators and add a welcoming visual landscape for residents of the area and visitors. In designing the wildflower and bulb mix there

was a requirement for bee friendly planting, sustainability, stimulating biodiversity, carbon storage, colour impact, ease of maintenance and value for money. Previously this area consisted of plants with limited biodiversity as well as grass.

At Tymon Park, the Council recently manufactured and installed a decorative pedestrian bridge to replace the old wooden bridge at the upper lakes in Tymon Park. The new bridge style is based on traditional parkland bridges and railings.

The Council also recently manufactured and installed a decorative gate to replace the old vehicle barrier at Waterstown Park. The new gate is in keeping with traditional parkland gates and provides a more inviting entrance to Waterstown Park.



### Improving Public Spaces

The Tymon Park pedestrian bridge is just one example of works carried out this year.

## ReUse Month

October is Reuse Month a national waste prevention initiative designed to challenge our behaviours and reduce the amount of waste we create.

This year South Dublin County Council has joined forces with several other local authorities in the Eastern Midlands Region to launch the RELOVE Fashion competition. Open to all secondary school students it encourages applicants to take a deeper look at fast fashion and how their clothing is made. The competition explores creative reuse options such as upcycling, repairs, and alterations. Overall winners will receive a trophy and design pack worth €1,000 for their school.



October is ReUse Month.



# LEVEL 3 COVID RESTRICTIONS



## South Dublin County Council continued to provide services to citizens and customers during the Level 3 COVID restrictions for Dublin.

The Government announced that, from 19 September 2020, the entire county of Dublin was to be placed on Level 3 under the Plan for Living with COVID-19. This action was based on a review of the current public health advice.

During these restrictions, South Dublin County Council's services continued to be provided subject to a number of measures brought in to

ensure the Council worked within the new guidelines. Some of these measures included the below.

Council offices closed to the general public for a walk-in service but remained accessible by appointment. During this time, payments could still be made online and by phone. All business meetings and committee meetings continued to be conducted online whenever possible.

## Community Call

South Dublin County Council established a Community Response Forum to coordinate COVID-19 related community supports at the onset of the pandemic.

As part of this, a helpline was established that vulnerable people can phone if they are looking for basic services such as delivery of food or meals, or transport for essential trips.

If you need our help, you can contact us on 1800 240519 Monday to Friday between 9am and 1pm or by emailing [covidsupport@sdblincoco.ie](mailto:covidsupport@sdblincoco.ie).

South Dublin County Libraries reverted to a click and collect service while our theatres and arts centres closed for the period.

Parks remained open subject to ongoing social distancing. Playgrounds also remained open, as did allotments.

The community call help line remains open and can be contacted at 1800 240519. More details on the helpdesk can be found in the yellow box to the left.

The Council would like to thank our citizens for their efforts during this time to slow the spread of COVID-19. The efforts you have made this year, and particularly in the past few weeks, have shown the resilience of South Dublin County in responding to the

challenges COVID has brought.

The Council would urge all our citizens to download and use the HSE COVID Tracker app at [covidtracker.gov.ie](https://covidtracker.gov.ie).

COVID Tracker is a free app for your mobile phone that works with Apple and Android. It will help us to protect each other and slow the spread of coronavirus in Ireland. Using the COVID Tracker app along with the existing public health measures will help us all stay safe when we meet up, socialise, work or travel.



Ongoing social distancing measures in parks.



# FIVE PARKS AWARDED GREEN FLAGS



**South Dublin County Council parks have been awarded five prestigious Green Flag Awards from An Taisce Environment Education Unit.**

**W**aterstown Park, Sean Walsh Park, Tymon Park, Corkagh Park and Rathfarnham Castle Park were all awarded Green Flags Awards, with Rathfarnham Castle Park receiving their flag for the first time.

The Green Flag Award is a highly regarded international benchmark that recognises and rewards the provision of high-quality parks and green spaces. Established in more than 50

countries, the award scheme is managed here in the Republic of Ireland by An Taisce. It rates the management of parks by local authorities across criteria including safety, cleanliness, conservation, sustainability and community involvement.

The Green Flag Awards are judged every year by a peer jury of green space experts, who volunteer their time to visit applicant sites and

## Green Flags in Ireland

The importance of Ireland's Public Parks and Gardens has been promoted significantly since An Taisce introduced the Green Flag Award for Parks Scheme as a pilot programme back in 2015.

This scheme delivers an international standard for well managed public parks and green spaces that are freely accessible to the public. While its activities deliver multiple wins for park operators and users, in its simplest form the scheme acknowledges and accredits best practice for the sustainable management of our parks and other public green spaces.

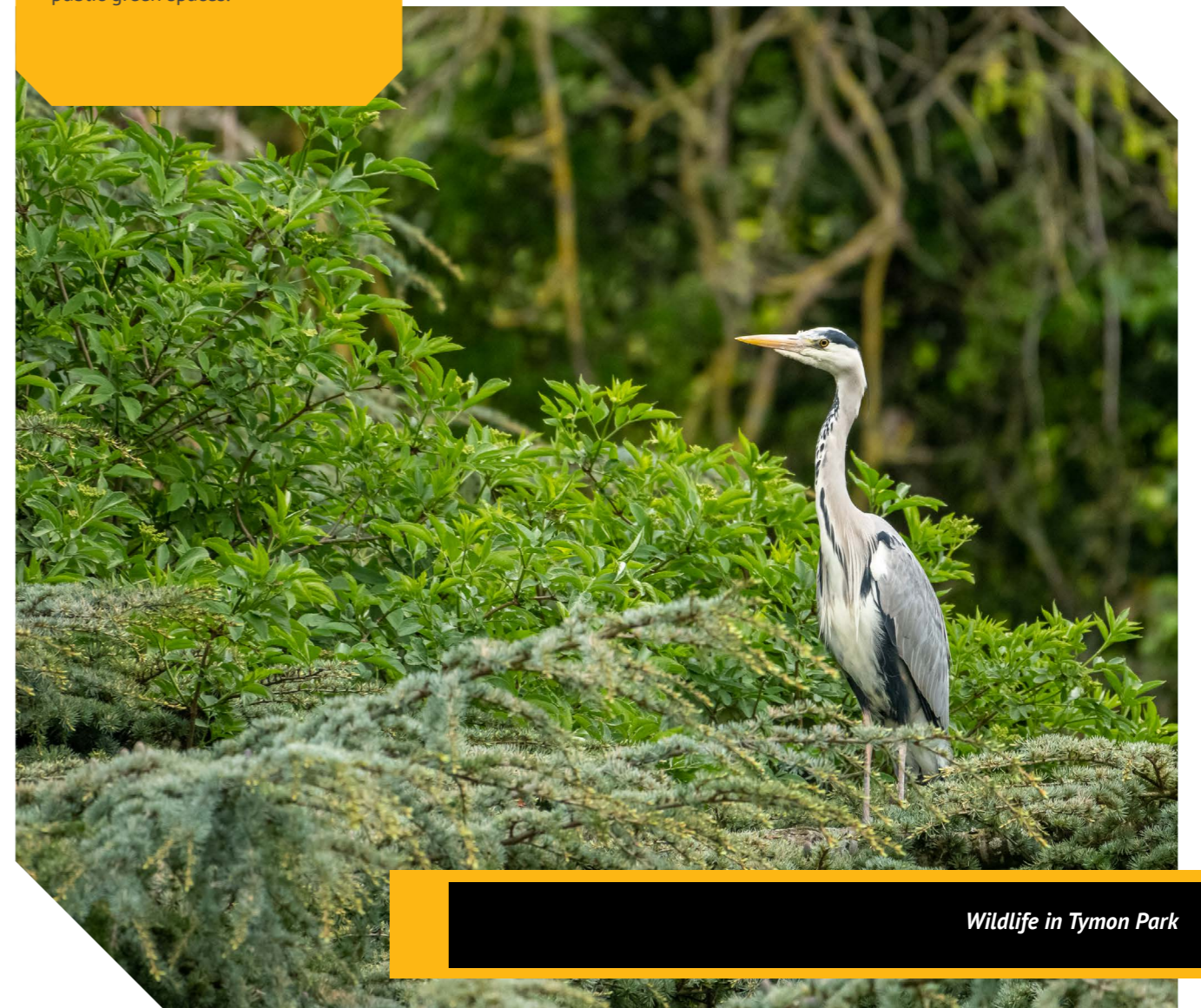
assess them against eight strict criteria, including horticultural standards, cleanliness, sustainability, and community involvement. Only awarded for exceeding tough environmental standards in green space management, and excellence of visitor attractions – the Green Flag Award for Parks is the mark of a quality park or green space and is recognised throughout the world.

In Ireland, the Green Flag Award for Parks Scheme has been enthusiastically received by park management as it delivers major wins for the delivery of quality green spaces by respective parks and park departments.

The five South Dublin County parks are included in the 84 public parks from across the country to achieve a

Green Flag award in 2020.

From among 15 countries whose parks met the standard this year there were once again more Green Flag Awards secured by Irish Parks and Gardens than by any country, other than the UK where the scheme originated in 1996.



*Wildlife in Tymon Park*



# €20M INFRASTRUCTURE UPGRADE



**The Minister for Housing, Local Government and Heritage, Darragh O'Brien TD joined us as work commenced on three significant infrastructure projects.**

**M**inister for Housing, Local Government and Heritage, Darragh O'Brien TD joined the Mayor of South Dublin County, Cllr Ed O'Brien, and South Dublin County Council Chief Executive Daniel McLoughlin, as work commenced on three significant infrastructure projects at the Adamstown Strategic Development Zone (SDZ) in Dublin. The ambitious large-scale delivery of essential infrastructure in Adamstown

consists of the construction of three separate projects: Airlie Park, Tandy's Lane Park and the Celbridge Link Road.

A combined €15 million was allocated for the three projects by the then Department of Housing, Planning and Local Government through the Local Infrastructure Housing Activation Funds (LIHAF) with South Dublin County Council providing the extra €5

## Local Infrastructure Housing Activation Funds

The Local Infrastructure Housing Activation Funds (LIHAF) is a key element of the Government's drive to build more homes.

The objective of the fund is to provide public off-site infrastructure to relieve critical infrastructure blockages. This enables the accelerated delivery of housing on key development sites in Dublin and urban areas of high demand for housing nationally.

Under LIHAF, the Government has committed €226m to help activate 34 high impact sites across Ireland.

## million in funding.

South Dublin County Council's successful LIHAF funding bid for financial support was linked to the delivery of 2,000 new homes within the Adamstown SDZ. The delivery of these homes is currently underway with over 1,500 homes already completed or contracted and the remaining 500 homes under construction. Within the large-scale delivery of homes, there are 300 homes at or below a cost of €300,000 and a further 500 at or below €320,000.

It is expected that work on all three projects will be completed in 2022.

Minister O'Brien, said, "the projects in South County Dublin are at the forefront of this housing delivery.

I commend South Dublin County Council for the work it has done using the LIHAF grant funding to drive the delivery of these much needed homes and providing them to families at below market price."

Cllr Ed O'Brien, Mayor of South Dublin County, said, "This Council has used LIHAF funding very effectively to unlock lands for development of homes for the residents of South Dublin. It is another indication of the Council's commitment to meeting its housing targets and the proactive approach which it is willing to take to ensure these targets are met. The Minister's visit also spoke well of his commitment to dealing effectively with the housing crisis and in particular the need for affordable housing in areas like South Dublin County."



*Turning the sod on the Celbridge Link Road*





**South Dublin County Council is leading the way in introducing age-friendly initiatives that will enhance the quality of life of older people in our County.**

A new Age Friendly County Strategy 2020-2024 has been adopted for South Dublin County which will see the Council lead on enhancing the quality of life of older people in our County.

The current programme for government acknowledges the central role for local authorities in this area. Through the implementation of the strategy, we will:

- co-ordinate a strategic approach to age-friendly initiatives with our statutory, community and voluntary sector partners
- make South Dublin County a place where older people are treated with dignity and respect
- ensure the contribution by older people to social,

economic and cultural fabric of the County is recognised and valued.

The adoption of the strategy follows a working group of the Social, Community, and Equality Strategic Policy Committee considering the needs, challenges and actions required to make South Dublin County a safe, welcoming and enjoyable place for our older citizens. This process was supported by Age Friendly Ireland, by ongoing research and an online public consultation process. The development of the strategy was also informed by the Age-Friendly City and Counties Programme, the World Health Organisation's Age-Friendly initiative and the associated Age Friendly County themes.

Our final, approved strategy

# BUILDING AN AGE-FRIENDLY SOUTH DUBLIN COUNTY

over 40 thematic actions including:

- Development of Age-Friendly Housing
- Introducing an Age-Friendly Parking Scheme
- Ensuring Age-Friendly principles across all Council plans/strategies
- Delivering sport and physical exercise opportunities for older people
- Supporting the provision of spaces for older people to meet and socialise
- Developing and expanding an Age-Friendly Business Programme in the County
- Programmes of activities and events for older people
- Structured Age-Friendly news and updates

The strategy comes at a time when the needs of older people are magnified by the COVID pandemic. Raising public



health awareness, addressing social isolation, supporting wellbeing, and ensuring access to services emerged as key issues for older people during the pandemic, in addition to existing and previously identified needs. Through targeted actions, this strategy will seek to address these issues and help make our older citizens, and services and supports for them, more resilient.

**Age-Friendly Housing**

Housing needs present a particular challenge for people getting older - while older people's preference is to stay in their own home and community for as long as possible, over time as more care and support is needed, accommodation may become unsuitable. Acknowledging this, an associated report on Age-Friendly Housing was presented to the Council outlining our approach to meet the changing needs of older people as they age.

Our vision is of accommodation as a proactive service, focused on helping older people to lead healthier, more active lives and to promote an independent and secure living environment for its residents. Our recently designed older persons' housing developments reaching planning/ construction stages have core principles such as a universal design approach to allow for future flexibility and adaptability of homes, built in prime locations near healthcare, transport and community services, communal space and facilities for health and support services and more.

There are currently 365 designated older persons' specific homes in the Council's housing stock and almost 200 more are at various stages of planning and delivery. While this will help greatly in meeting the existing demand, we will continue to plan for the projected future exponential growth in demand for older persons accommodation.



# AUGUST STATISTICS REPORT HIGHLIGHTS



## Corporate Performance and Change Management

Number of Customer Care queries received	7,289
Number of Customer Care queries closed within deadline	6,674
Web pages opened on Council websites	267,695
Social media reach	1,177,244
Social media engagement	34,214



## Economic, Enterprise and Tourism Development

LEO - Number of mentoring sessions	45
Grange Castle jobs sustained	5,328
Library visitors	25,085
Library items borrowed	93,600



## Environment, Water and Climate Change

Grass cut - hectares	813
Kilometers of road swept monthly	880
Derelict site/dangerous buildings inspections	25
Litter - Fines Issued	10
Tonnes of waste collected - litter and illegal dumping	582
Tonnes of waste collected from street bins	35



## Housing, Social and Community Development

Total Housing Stock	9,696
Total housing needs assessed	6,729
Housing maintenance requests received	1,336
Allocations - New Tenancies	27
Number of PRTB inspections	230
Number of actions taken in response to anti-social reports	827
Electrical inspections completed	58



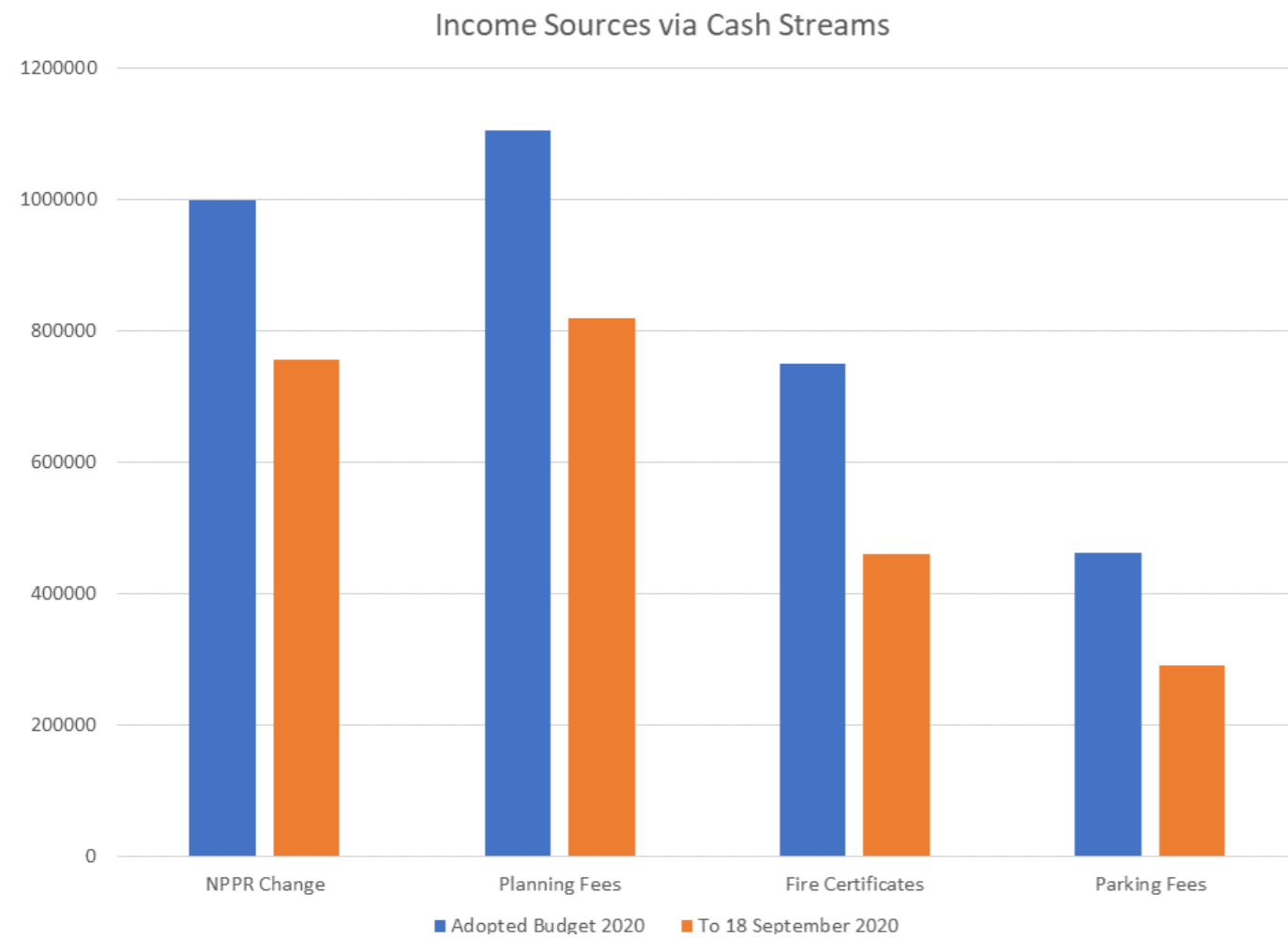
## Land Use, Planning and Transportation

Planning applications received - new housing units	121
Area of road repaired in m2	15,877
Planning enforcements initiated	36
Number of public lights in charge	30,247
Number of traffic lights repaired within 24 hours	52

You can view all statistics under the Statistics Report in the Manager's Report headed item of the monthly Council meeting.



# FINANCE REPORT



You can view the full Finance Report under the Manager's Report headed item of the monthly Council meeting agenda.

# IMAGES OF THE MONTH



*The Mayor with volunteers at Citywest*



*Elected members supporting National Bike Week*



FOLLOW US ON

# SOCIAL MEDIA

---

South Dublin County Council



@sdublincoco



Southdublincoco



South Dublin County Council



@sdublincoco





Website [www.sdcc.ie](http://www.sdcc.ie)