

**USE ZONING OBJECTIVES**

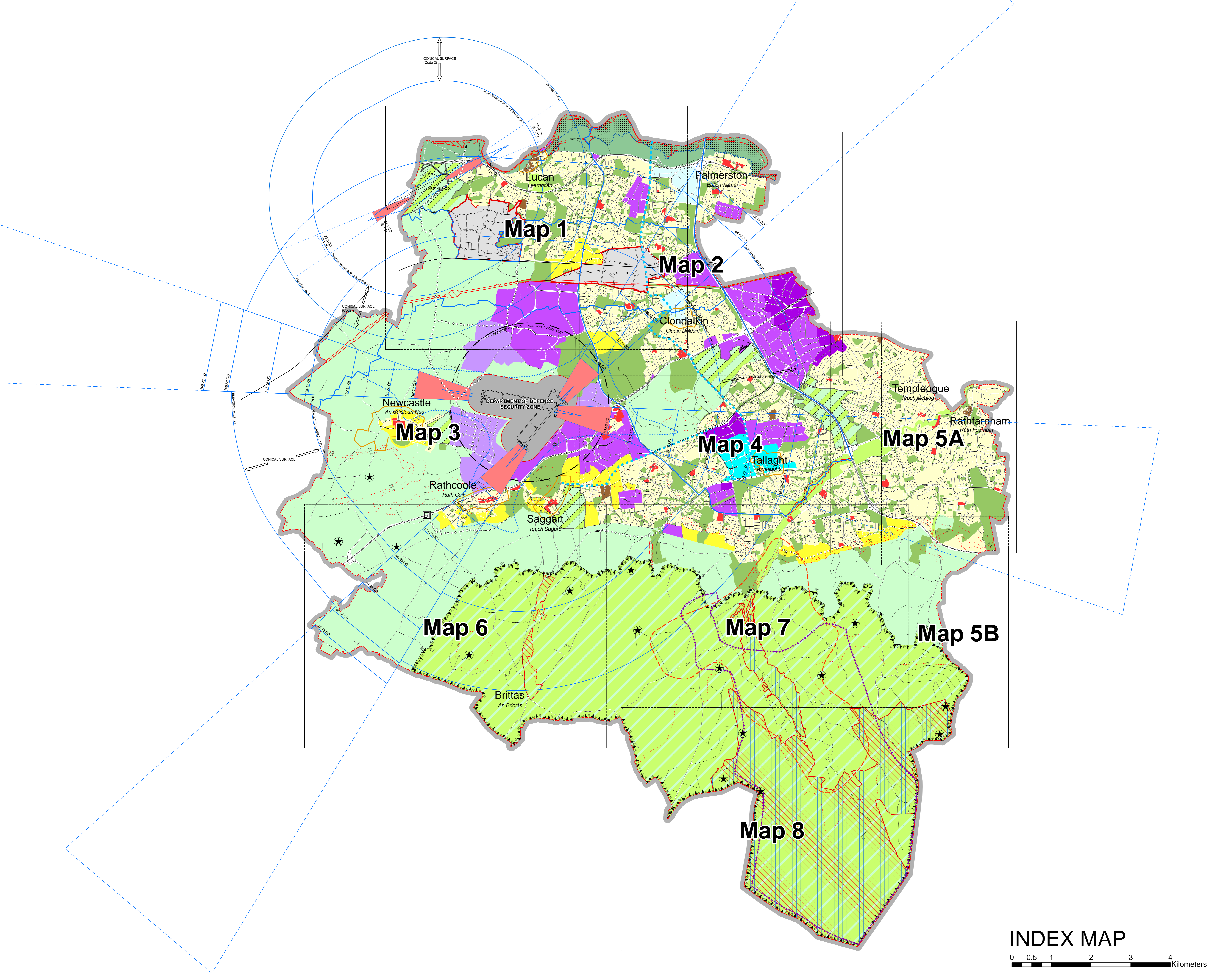
Objective A	To protect and/or improve Residential Amenity	
Objective A1	To provide for new Residential Communities in accordance with approved Area Plans	
Objective B	To protect and improve Rural Amenity and to provide for the development of Agriculture	
Objective CT	To protect, improve and provide for the future development of the County Town of Tallaght	
Objective DC	To protect, provide for and/or improve District Centre facilities	
Objective EP1	To facilitate opportunities for intensive employment uses complemented by mixed-use development based on a principle of street networks and in accordance with approved plans	
Objective EP2	To facilitate opportunities for manufacturing, Research and Development facilities, light industry and employment and enterprise related uses in industrial areas and business parks	
Objective EP3	To provide for distribution, warehouse and logistics and related industry facilities which require good access to the major road network within a good quality environment	
Objective F	To preserve and provide for Open Space and Recreational Amenities	
Objective G	To protect and improve High Amenity Areas	
Objective GB	To preserve a Green Belt between Development Areas	
Objective H	To protect and enhance the outstanding natural character of the Dublin Mountain Area	
Objective I	To protect and enhance the outstanding character and amenity of the Liffey Valley and to preserve its strategic importance as a green break between urban settlement areas	
Objective LC	To protect, provide for and/or improve Local Centre facilities	
Objective TC	To protect, provide for and/or improve Town Centre facilities	
Objective SDZ	Refer to Planning Scheme for Details (Strategic Development Zone)	

**SPECIFIC OBJECTIVES**

Junction Proposals	
Road Proposals - - Long Term	
Road Proposals - - 6 Year	
LRT Proposals	
To preserve Prospects	
Special Areas of Conservation	
Proposed Natural Heritage Area	
Liffey Valley Special Area Amenity Order 1990	
Areas Sensitive to Forestry	
Areas of Archaeological Potential	
Contour Lines	
Glenasmole / Bohernabreena Study Area	
Bohernabreena Reservoir Catchment Area	
Section 49 Kildare Route Project Metro West	
County Boundary	
<b>DEVELOPMENT CONTROL AT AERODROMES</b> (Please see Written Statement for Further Guidance on Permissible Height of Structures)	
Approach Areas - No Development Permissible	
Boundary of Noise Significant Area	
<b>DEPARTMENT OF DEFENCE REQUIREMENTS AT CASEMENT</b>	
Security Zone Restrictions	
Inner Zone - Variable Restriction on Height of Buildings Dependant on Location	

*Note:*  
The lines of the Road Proposals shown on this map are diagrammatic only and are subject to change during the detailed design process.  
Ordnance Survey Ireland Licence No. 201023/CCMA/SouthDublinCountyCouncil

**SCALE 1:30,000**



**INDEX MAP**

