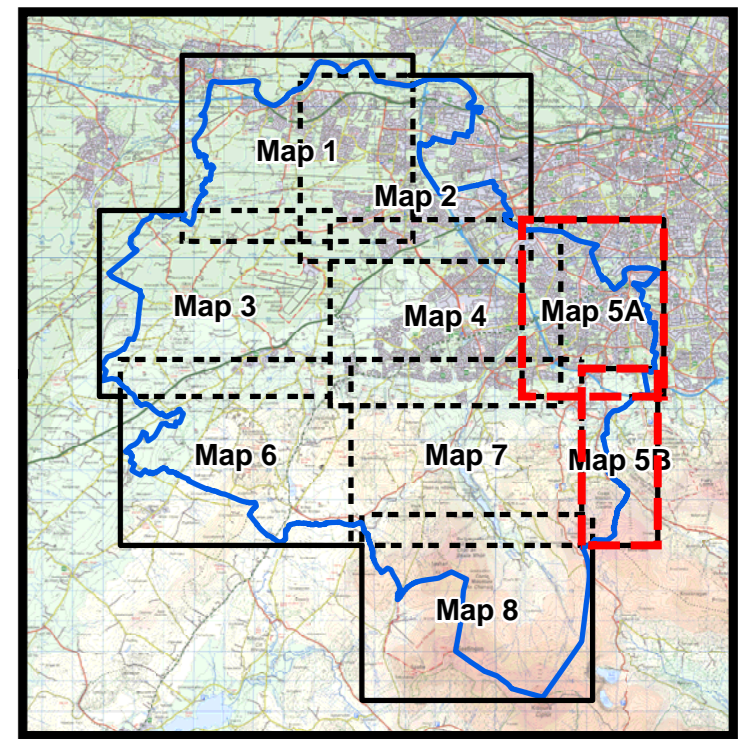
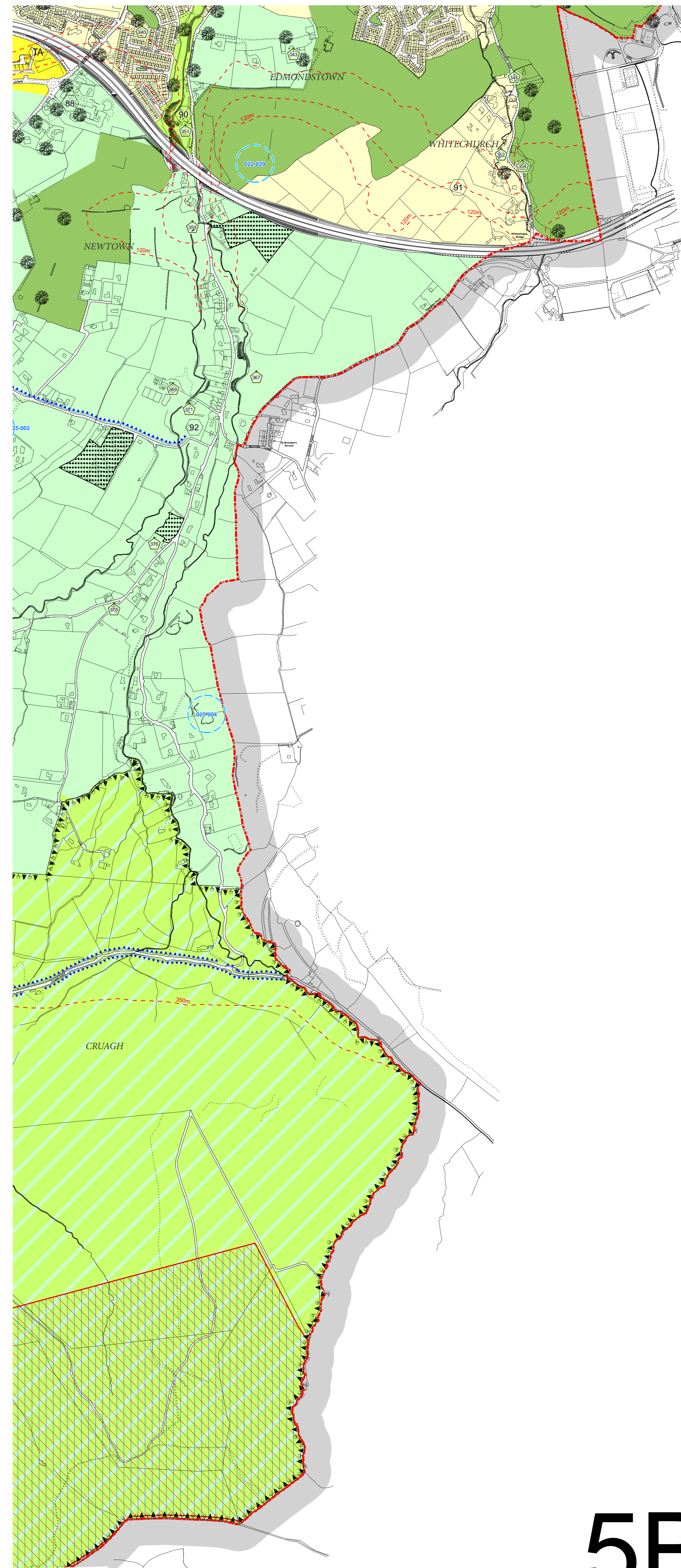
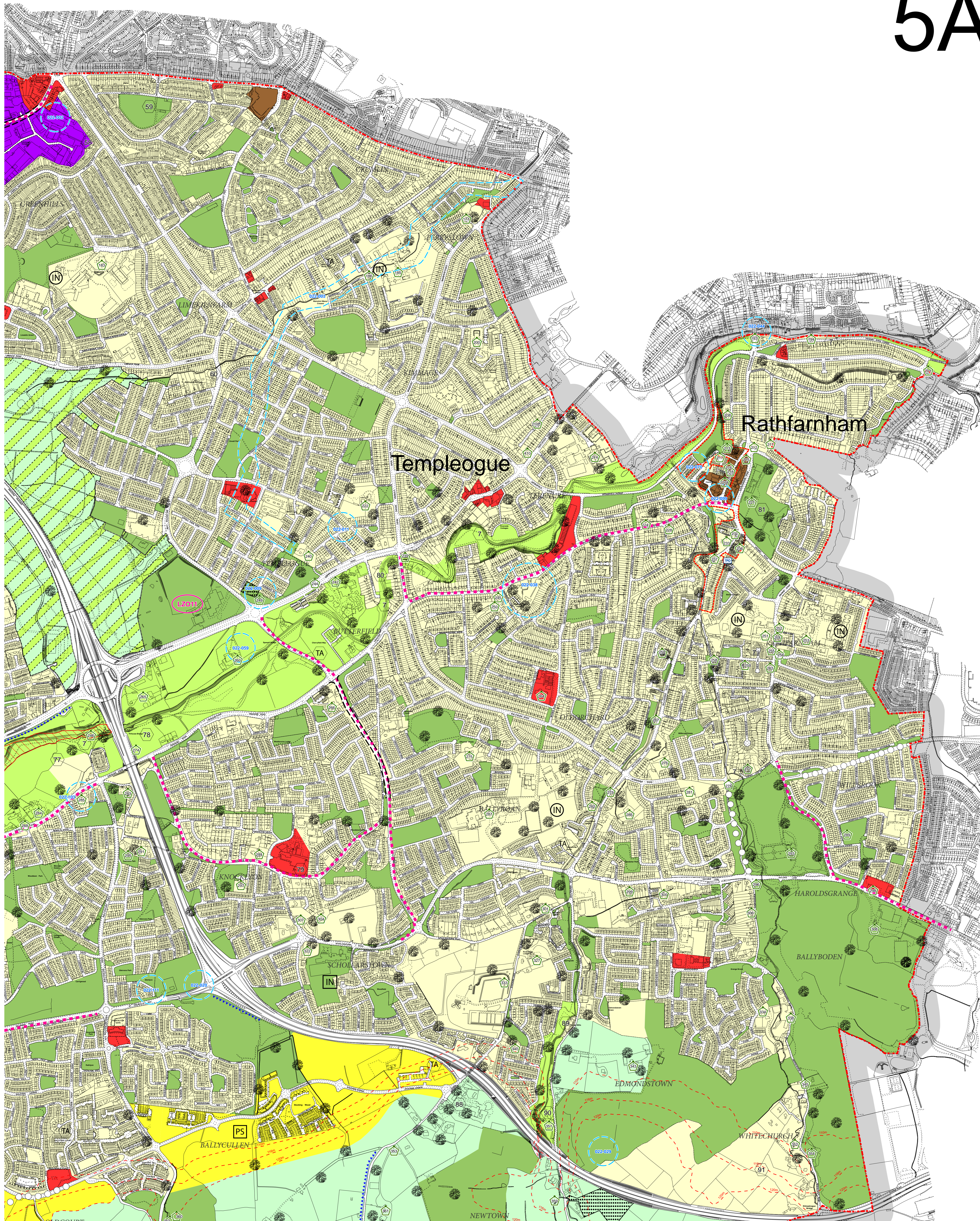


# 5A



**USE ZONING OBJECTIVES**

- Objective A To protect and/or improve Residential Amenity
- Objective A1 To provide for new Residential Communities in accordance with approved Area Plans
- Objective B To protect and improve Rural Amenity and to provide for the development of Agriculture
- Objective CT To protect, improve and provide for the future development of the County Town of Tallaght
- Objective DC To protect, provide for and/or improve District Centre facilities
- Objective EP1 To facilitate opportunities for intensive employment lands complemented by mixed-use development based on a principle of street networks and in accordance with approved plans
- Objective EP2 To facilitate opportunities for manufacturing, Research and Development facilities, light industry and employment and enterprise related uses in industrial areas and business parks
- Objective EPS To provide for distribution, warehouse, and logistics and related industry facilities which require good access to the major road network within a good quality environment
- Objective F To preserve and provide for Open Space and Recreational Amenities
- Objective G To protect and improve High Amenity Areas
- Objective GB To preserve a Green Belt between Development Areas
- Objective H To protect and enhance the outstanding natural character of the Dublin Mountains Area
- Objective I To protect and enhance the outstanding character and amenity of the Liffey Valley and to preserve its strategic importance as a green break between urban settlement areas
- Objective LC To protect, provide for and/or improve Local Centre facilities
- Objective TC To protect, provide for and/or improve Town Centre facilities
- Objective SDZ Refer to Planning Scheme for Details (Strategic Development Zone)

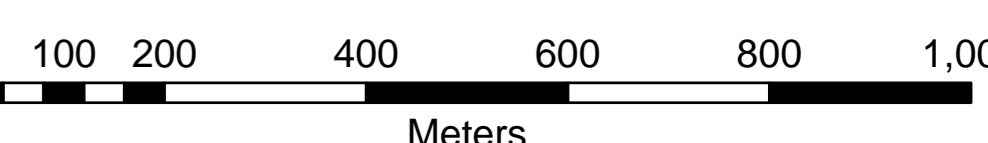
**SPECIFIC OBJECTIVES**

- Local Zoning Objective and Boundary
- Specific Local Objective and Boundary
- Junction Proposals
- Long Term Road Proposals
- 6 Year Road Proposals
- Cycleways
- SDZ Road Plans
- LRT Proposals
- To protect and preserve Trees and Woodlands
- To provide an Amenity Lay-by
- To provide for Car Parking
- To protect and / or provide for a Burial Ground
- To protect and / or provide for Institutional use in open lands
- To provide for a Post Primary School or other Institution
- To provide for a Primary School
- To provide for Local Centre
- To provide for Traveller Accommodation
- To Provide for Traveller Accommodation (Site to be selected)
- Record of Monuments and Places (For Areas of Archaeological Potential see Index Map)
- Record of Protected Structures
- SEVESO Sites and Boundary
- Architectural Conservation Areas
- Special Areas of Conservation
- Proposed Natural Heritage Areas
- Liffey Valley Special Area Amenity Order 1990
- Area Sensitive to Forestry
- Protect and Preserve Significant Views
- Tree Preservation Order
- Contour Lines
- Bohemabreena Reservoir Catchment Area
- Glensmole / Bohemabreena Study Area
- County Boundary

**Note:** The lines of the Road Proposals shown on this map are diagrammatic only and are subject to change during the detailed design process.

Ordnance Survey Ireland Licence No. 2010/23/CCMA/South Dublin County Council

**SCALE 1:7,500**



Frank Nevin  
Director of Planning.  
Colin Ryan  
B.A., M.Sc., M.B.A.  
Senior Planner.

# 5

# 5B