

DEVELOPMENT PLAN  
2004 - 2010

USE ZONING OBJECTIVES

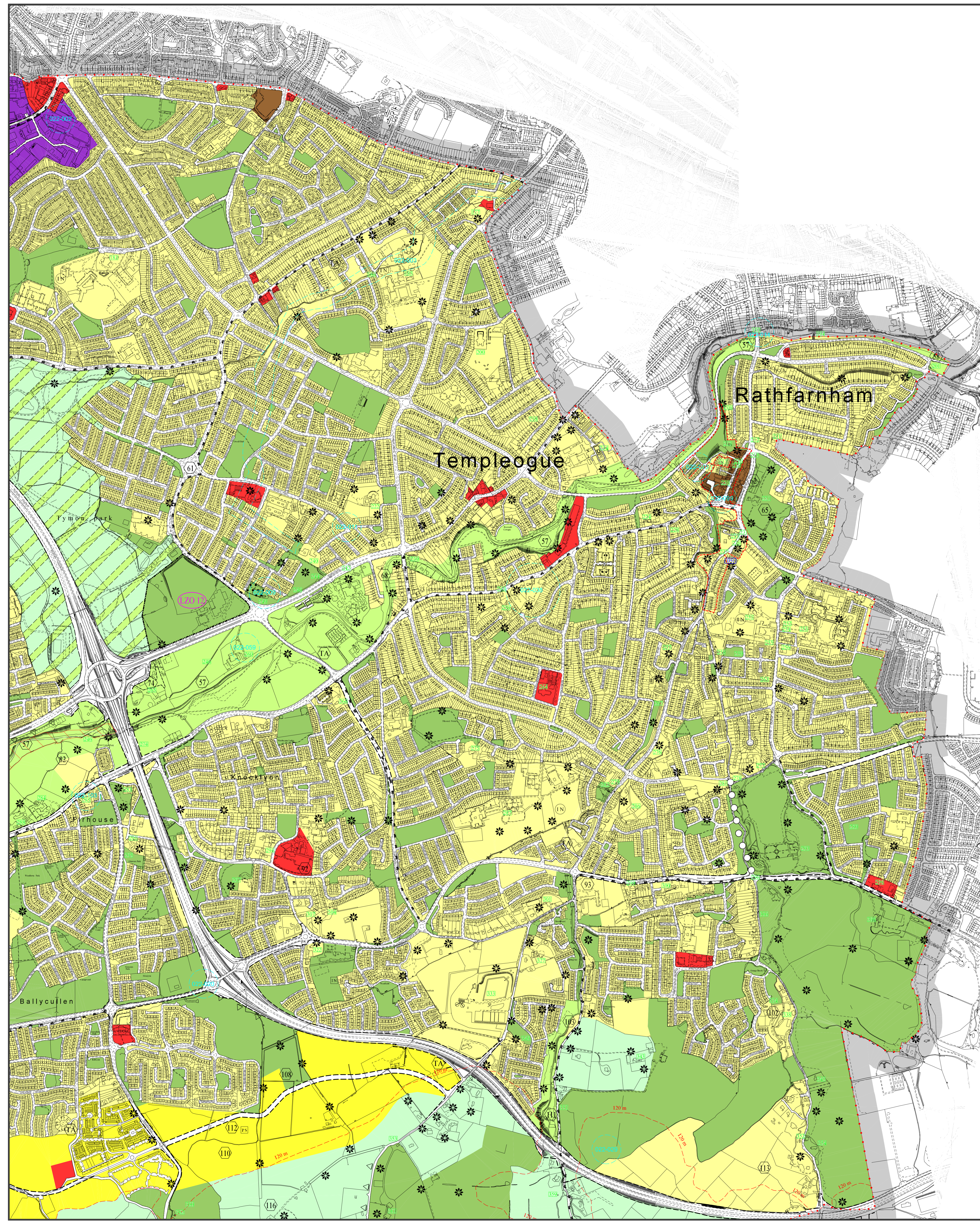
- Objective A To protect and / or improve Residential Amenity. ■
- Objective A1 To provide for new Residential Communities in accordance with Approved Area Plans. ■
- Objective B To protect and improve Rural Amenity and to provide for the development of Agriculture. ■
- Objective CT To protect, improve and provide for the future development of the County Town of Tallaght. ■
- Objective TC To protect, provide for and / or improve Town Centre facilities. ■
- Objective DC To protect, provide for and / or improve District Centre facilities. ■
- Objective LC To protect, provide for and / or improve Local Centre facilities. ■
- Objective E To provide for Enterprise, Employment and Related Uses. ■
- Objective F To preserve and provide for Open Space and Recreational Amenities. ■
- Objective G To protect and improve High Amenity Areas. ■
- Objective GB To preserve a "Green Belt" between development areas. ■
- Objective II To protect and enhance the outstanding natural character of the Dublin Mountain Area. ■

SPECIFIC OBJECTIVES

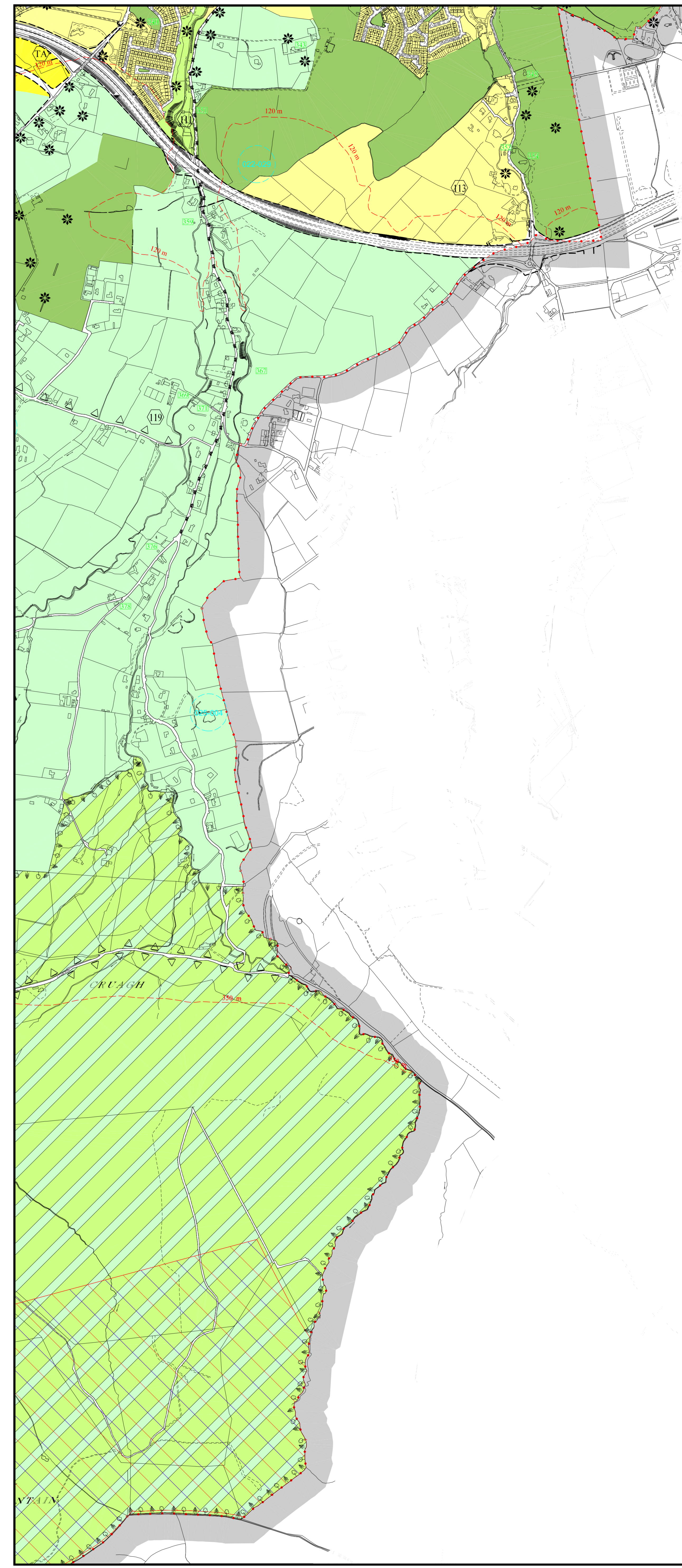
- Local Zoning Objective. (LZO)
- Local Zoning Objective Boundary.
- Nuas Road Local Zoning Objective.
- Junction Proposals
- Road Proposals - Long Term
- Road Proposals - 6 Year
- LRT Proposals
- Railway Buffer Zone
- To provide a Park and Ride Facility
- Cycleways
- To protect and / or provide for a Burial Ground
- To protect and / or provide for Institutional Use in open lands
- To provide for Primary School
- To provide for a Post Primary School or other Institution
- To provide for Local Centre
- To provide for Traveller Accommodation
- To provide for Traveller Accommodation (Site yet to be selected)
- Record of Monuments and Places (For Areas of Archaeological Potential see Index Map.)
- Record of Protected Structures
- Architectural Conservation Areas
- Adumbrations Planning Scheme Boundary (See Planning Scheme for details)
- Special Areas of Conservation
- Proposed Natural Heritage Areas
- Liffey Valley Special Area Amenity Order 1990
- To protect and preserve Trees and Woodlands
- Areas Sensitive to Forestry
- To Preserve Views
- To provide an Amenity Lay-by
- Specific Local Objective (See Written Statement)
- Objective Boundary
- Tree Preservation Order
- Tree Preservation Order Boundary
- Contour Lines
- Electoral Districts
- Glensmole / Bohernabreena Study Area
- Bohernabreena Reservoir Catchment Area
- County Boundary

Note: The lines of the Road Proposals shown on this map are diagrammatic only and are subject to change during the detailed design process.

SCALE 1:7,500



MAP 5A



MAP 5B