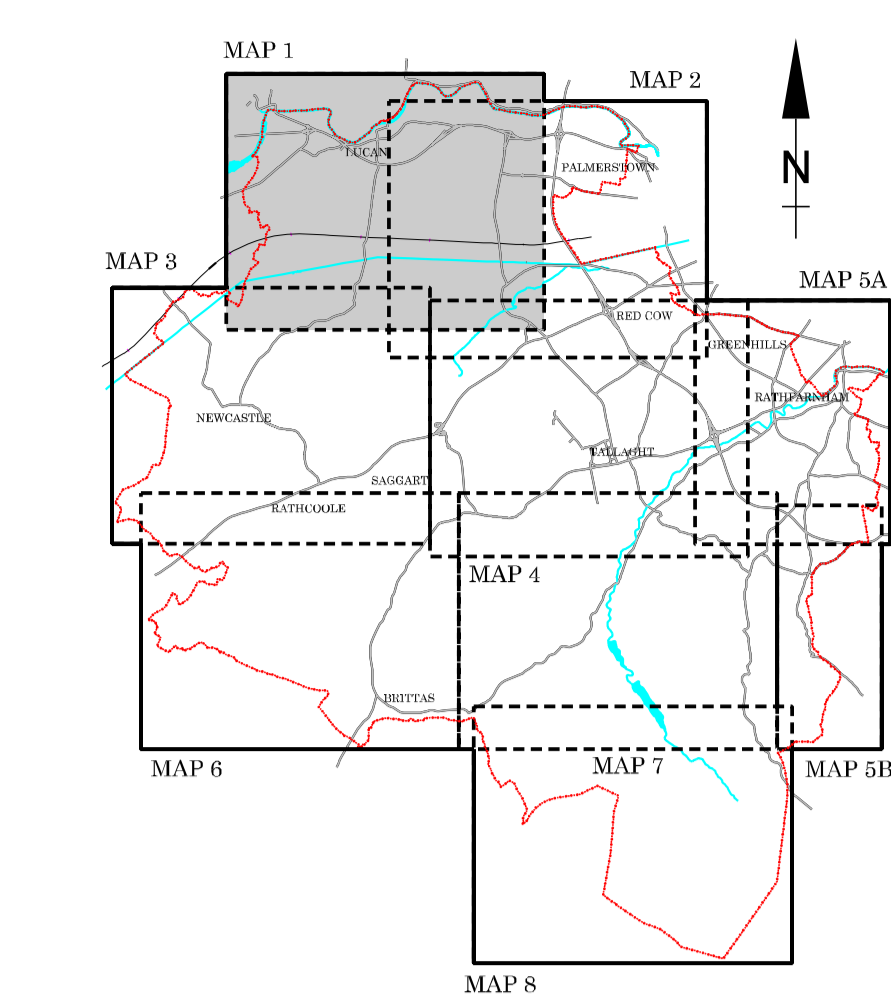


SOUTH DUBLIN COUNTY COUNCIL



DEVELOPMENT PLAN 2004 - 2010

USE ZONING OBJECTIVES

- Objective A To protect and / or improve Residential Amenity.
- Objective A1 To provide for new Residential Communities in accordance with Approved Area Plans.
- Objective B To protect and improve Rural Amenity and to provide for the development of Agriculture.
- Objective CT To protect, improve and provide for the future development of the County Town of Tallaght.
- Objective TC To protect, provide for and / or improve Town Centre facilities.
- Objective DC To protect, provide for and / or improve District Centre facilities.
- Objective LC To protect, provide for and / or improve Local Centre facilities.
- Objective E To provide for Enterprise, Employment and Related Uses.
- Objective F To preserve and provide for Open Space and Recreational Amenities.
- Objective G To protect and improve High Amenity Areas.
- Objective GH To preserve a "Green Belt" between development areas.
- Objective H To protect and enhance the outstanding natural character of the Dublin Mountain Area.

SPECIFIC OBJECTIVES

- Local Zoning Objective.
- Local Zoning Objective Boundary.
- Nuis Road Local Zoning Objective.
- Junction Proposals
- Road Proposals -- Long Term
- Road Proposals -- 6 Year
- LRT Proposals
- Railway Buffer Zone
- To provide a Park and Ride Facility
- Cycleways
- To protect and / or provide for a Burial Ground
- To protect and / or provide for Institutional Use in open lands
- To provide for Primary School
- To provide for a Post Primary School or other Institution
- To provide for Local Centre
- To provide for Traveller Accommodation
- To provide for Traveller Accommodation (Site yet to be selected)
- Record of Monuments and Places (For Areas of Archaeological Potential see Index Map)
- Record of Protected Structures
- Architectural Conservation Areas
- Adamstown Planning Scheme Boundary (See Planning Scheme for details)
- Special Areas of Conservation
- Proposed Natural Heritage Areas
- Liffey Valley Special Area Amenity Order 1990
- To protect and preserve Trees and Woodlands
- Areas Sensitive to Forestry
- To Preserve Views
- To provide an Amenity Lay-by
- Specific Local Objective (See Written Statement)
- Objective Boundary
- Tree Preservation Order
- Tree Preservation Order Boundary
- Contour Lines
- Electoral Districts
- Glensmole / Bohernabreena Study Area
- Bohernabreena Reservoir Catchment Area
- County Boundary

Note:
The lines of the Road Proposals shown on this map are diagrammatic only and are subject to change during the detailed design process.

SCALE 1:7,500

Kieran Kennedy
M.Sc., M.Appl.Sc., M.R.T.P.I., A.S.C.S.
Director of Planning.

Michael Kenny
B.A., M.R.U.P., Dip.L.D., M.I.P.I.
Senior Planner.

NOTE:
SEE INDEX MAP FOR DETAILS OF APPROACH AREAS AND HEIGHT CONTROL ZONES FOR BACKWESTON AERODROME, BACKWESTON PARK.

