

ARUP

Topography Map

Newlands Cross Upgrade EIS

D4556.11

December 2007




Figure 7.1

Not To Scale

Ordnance Survey Ireland Licence Number
EN 0002807 © Government of Ireland



Legend:

-  tree planting
-  hedgerow planting
-  study area
(permanent and temporary landtake)



ARUP

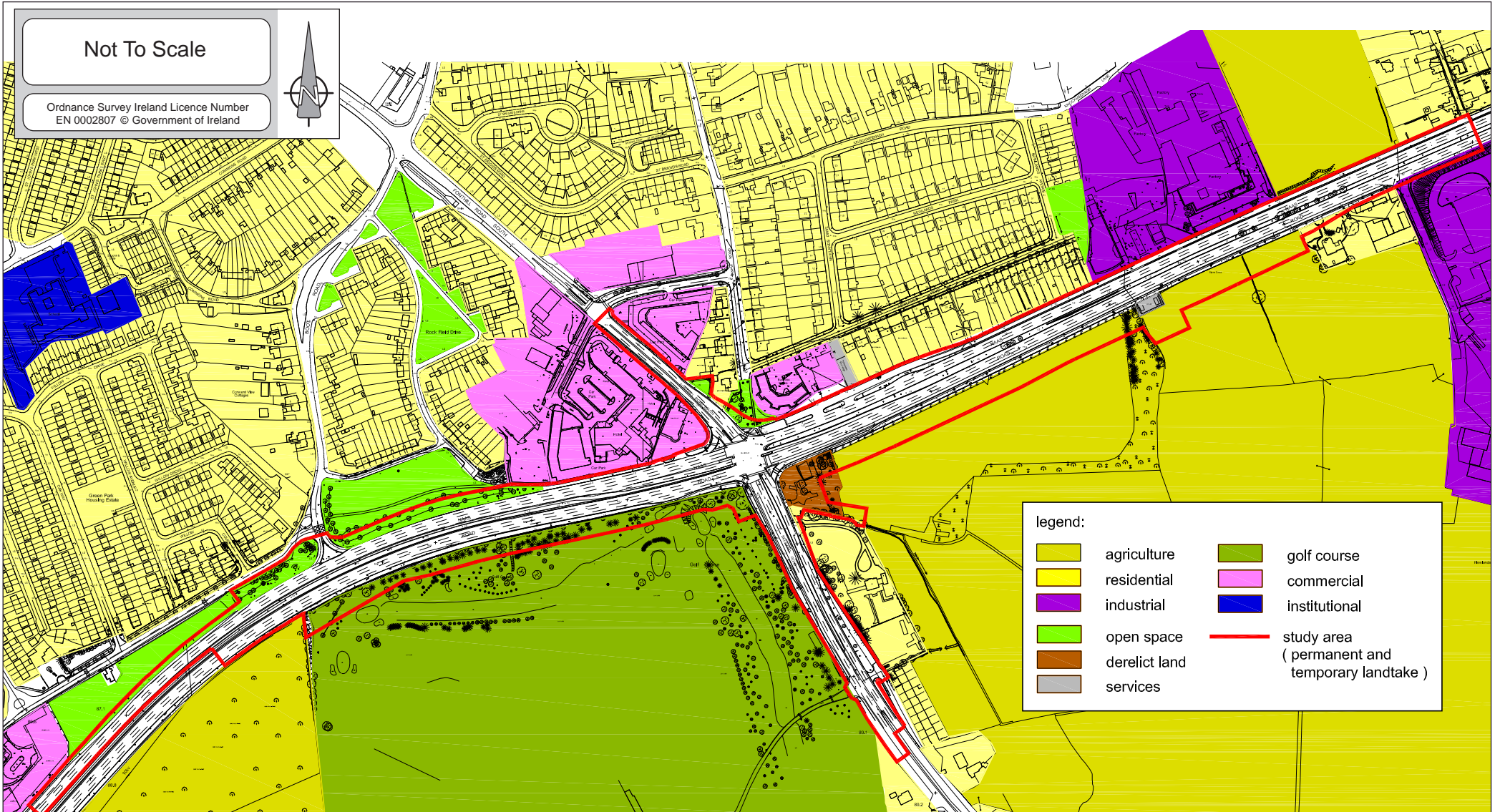
Existing Vegetation Map

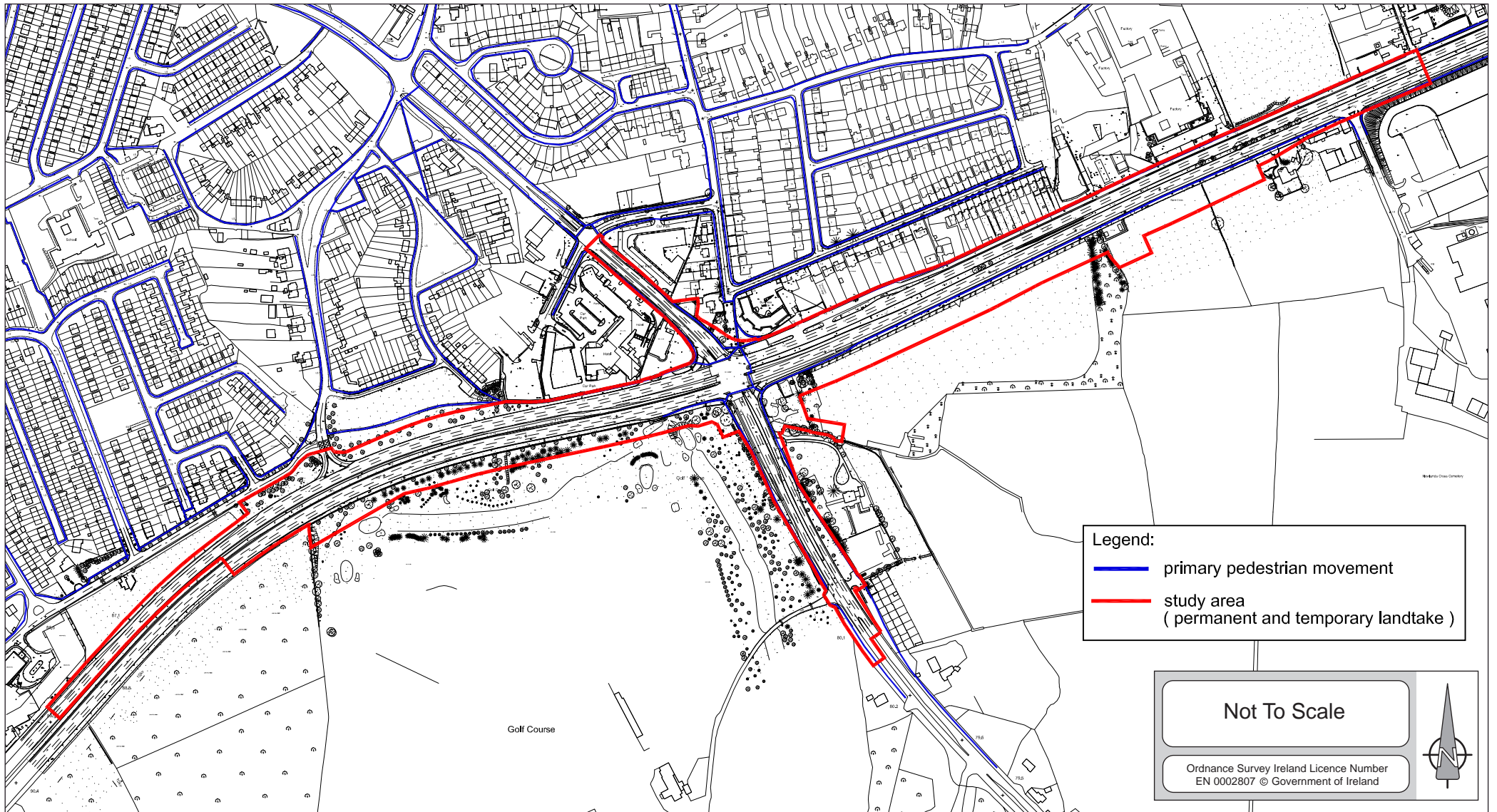
Newlands Cross Upgrade EIS

D4556.11

December 2007

Figure 7.2





ARUP

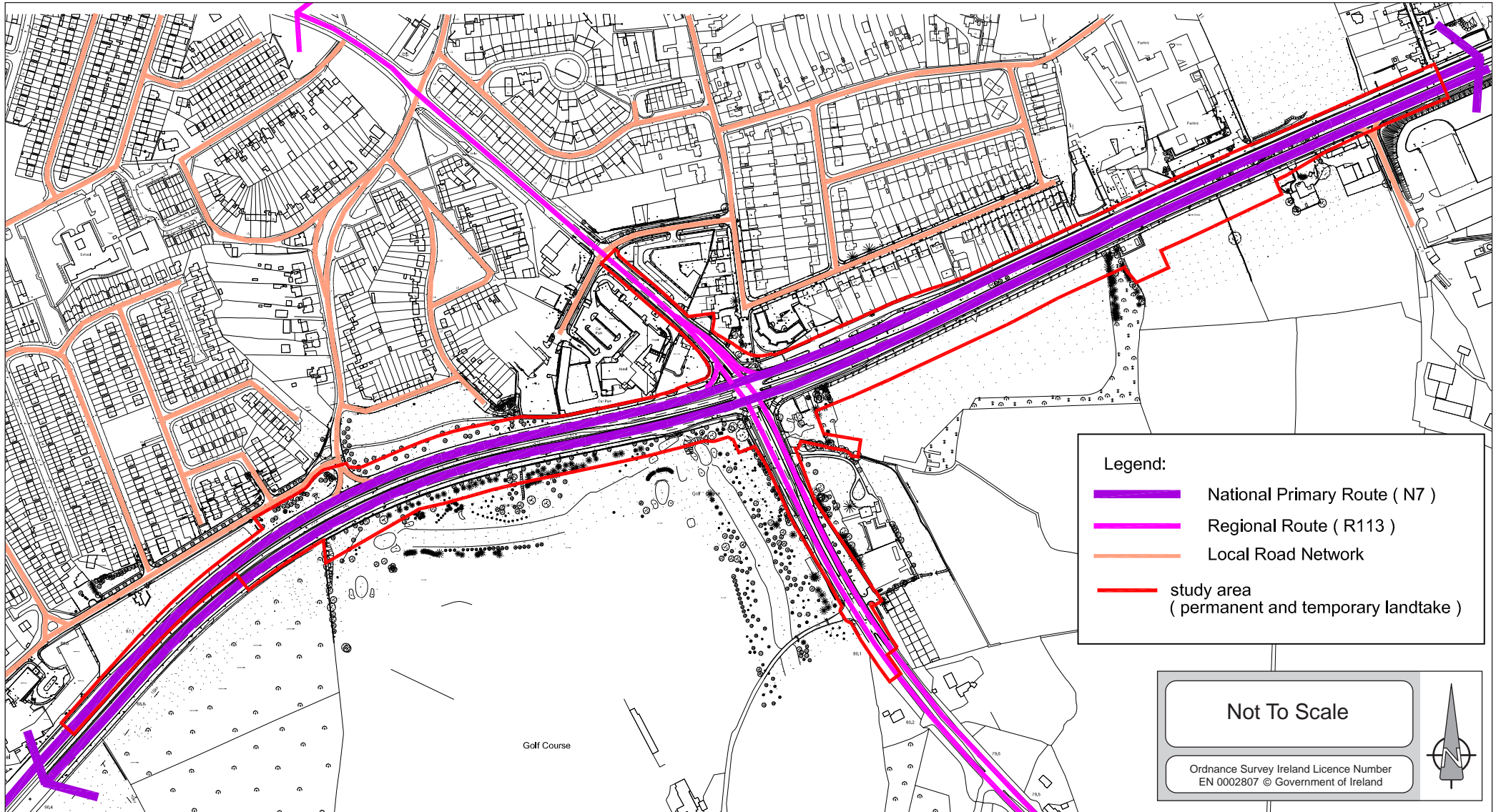
Pedestrian Map

Newlands Cross Upgrade EIS

D4556.11

December 2007

Figure 7.4



ARUP

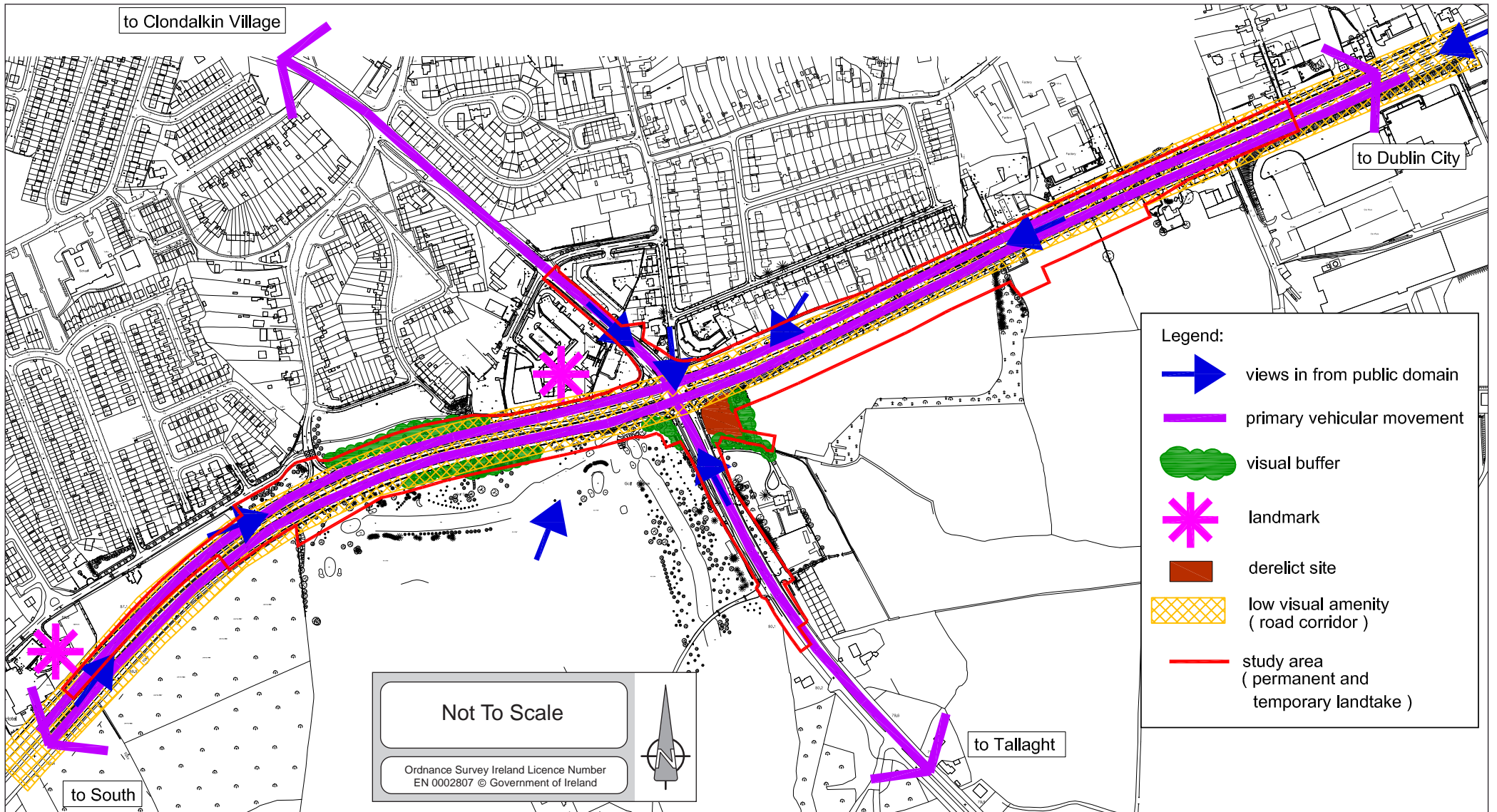
Vehicular Movement

Newlands Cross Upgrade EIS

D4556.11

December 2007

Figure 7.5



ARUP

Visual Analysis Map

Newlands Cross Upgrade EIS

D4556.11

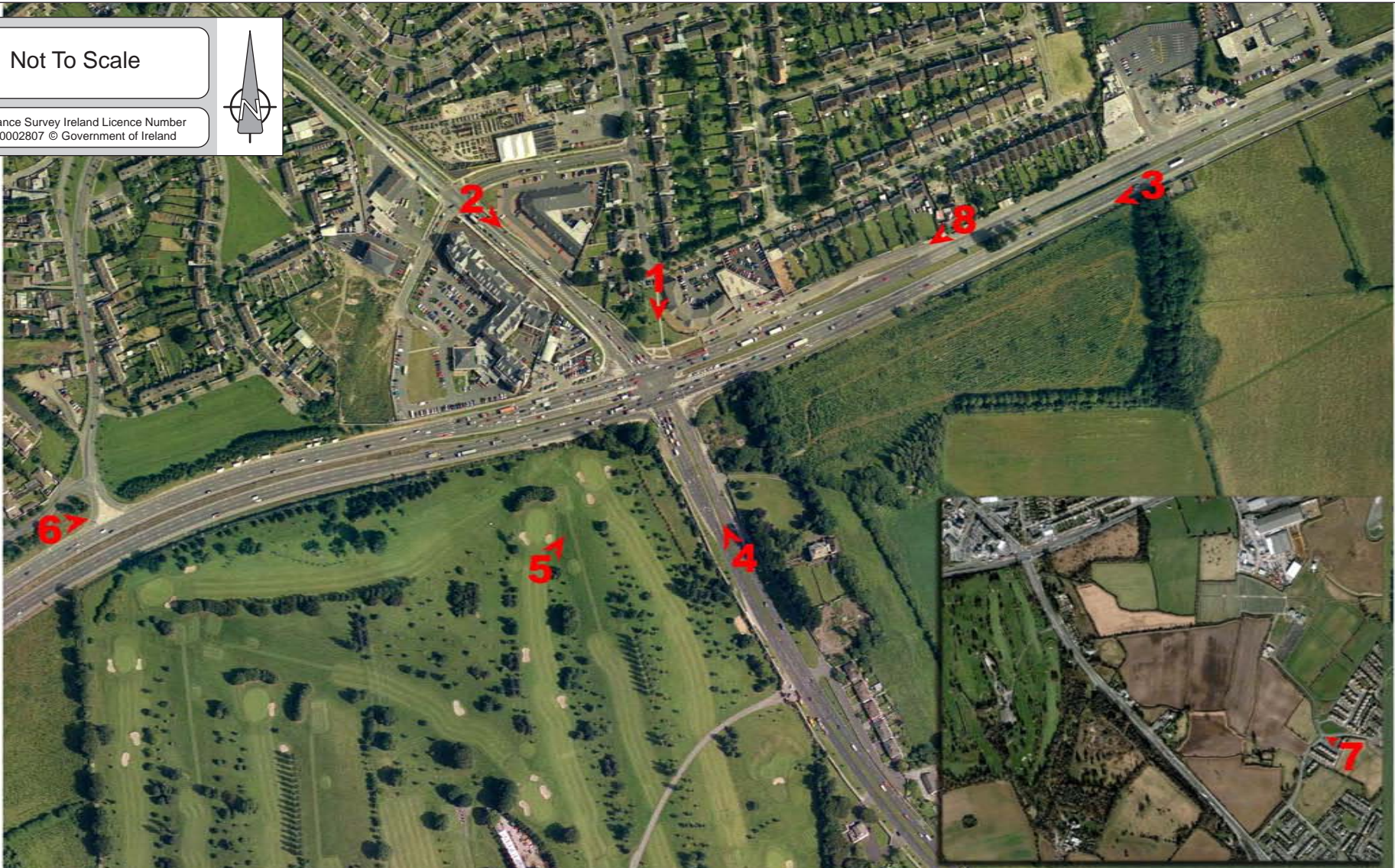
December 2007

Figure 7.6

Not To Scale



Ordnance Survey Ireland Licence Number
EN 0002807 © Government of Ireland



ARUP

Camera Location Map

Newlands Cross Upgrade EIS

D4556.11

December 2007

Figure 7.7



ARUP

View 1 Existing

Newlands Cross Upgrade EIS

D4556.11

December 2007

Figure 7.8



ARUP

View 1 Proposed

Newlands Cross Upgrade EIS

D4556.11

December 2007

Figure 7.9



ARUP

View 2 Existing

Newlands Cross Upgrade EIS

D4556.11

December 2007

Figure 7.10



ARUP

View 2 Proposed

Newlands Cross Upgrade EIS

D4556.11

December 2007

Figure 7.11



ARUP

View 3 Existing

Newlands Cross Upgrade EIS

D4556.11

December 2007

Figure 7.12



ARUP

View 3 Proposed

Newlands Cross Upgrade EIS

D4556.11

December 2007

Figure 7.13



ARUP

View 4 Existing

Newlands Cross Upgrade EIS

D4556.11

December 2007

Figure 7.14



ARUP

View 4 Proposed

Newlands Cross Upgrade EIS

D4556.11

December 2007

Figure 7.15



ARUP

View 5 Existing

Newlands Cross Upgrade EIS

D4556.11

December 2007

Figure 7.16



ARUP

View 5 Proposed

Newlands Cross Upgrade EIS

D4556.11

December 2007

Figure 7.17



ARUP

View 6 Existing

Newlands Cross Upgrade EIS

D4556.11

December 2007

Figure 7.18



ARUP

View 6 Proposed

Newlands Cross Upgrade EIS

D4556.11

December 2007

Figure 7.19



ARUP

View 7 Existing

Newlands Cross Upgrade EIS

D4556.11

December 2007

Figure 7.20



ARUP

View 7 Proposed

Newlands Cross Upgrade EIS

D4556.11

December 2007

Figure 7.21



ARUP

View 8 Existing

Newlands Cross Upgrade EIS

D4556.11

December 2007

Figure 7.22



ARUP

View 8 Proposed

Newlands Cross Upgrade EIS

D4556.11

December 2007

Figure 7.23

