


South Dublin County Local Community Development Committee

Annual Report 2020



LCDC

Coiste Forbartha Pobail Áitiúil
Local Community Development Committees



We are grateful that because of the commitment and efforts of all our members and partner organisations, we continued to fulfil our function throughout the pandemic year of 2020. Thank you to all of those who gave their time professionally and in a voluntary capacity to ensure that was the case.



Contents

1	Forward by Local Community Development Committee Chairperson Professor Mary P. Corcoran	5
2	Members of the South County Dublin Local Community Development Committee	6
3	Introduction to Local Community Development Committee Annual Report 2020	11
4	Membership and Organisational structure of the South Dublin County Local Community Development Committee	14
5	Report of Local Community Development Committee meetings in 2020	15
6	Report of Local Community Development Committee Subcommittees 2020	16
7	The Lowdown on the LCDC	18
8	Report of Social Inclusion Community Activation Programme	20
9	Local Economic and Community Plan 2015-2021	23
10	LEADER	23
11	Local Community Development Committee Funding 2020	26
12	Appendices	28

Reflections

1	Community Call South Dublin COVID-19 Community Response Forum	12
2	Tallaght Drug & Alcohol Task Force	17
3	Foróige Tallaght	19
4	South Dublin County Volunteer Centre	22
5	South Dublin County Children and Young People's Services Committee	24
6	South Dublin County Public Participation Network	27

Appendices

Appendix 1	Membership of South Dublin County Local Community Development Committee and schedule of meetings 2020	28
Appendix 2	Membership of Local Community Development Committee Subcommittees 2020	29
Appendix 3	Local Community Development Committee funding allocations 2020	30
Appendix 4	LEADER Projects	38
Appendix 5	Community Actions under the Local Economic and Community Plan	40





1 | Forward

by Local Community Development Committee Chairperson Ms. Mary Corcoran

There is no doubt that 2020 was a year like no other. We on the LCDC began the year meeting in person in February 2020 with little inkling of how things were about to change. The global pandemic very quickly overshadowed all aspects of our activities and those of the organisations and services with whom we interact in South Dublin County. Everyone was required to adapt and innovate to the new demands placed on us as a result of COVID-19, while continuing to do our jobs to the best of our abilities.

Our Annual Report 2020 demonstrates the extent to which we maintained our commitment as an LCDC to local and community development in the face of new challenges. Throughout the report you will find a series of Reflections on COVID by members of the LCDC and our collaborating partners. These reflections recall some of the specific challenges posed by the pandemic and the impressive responsiveness to those challenges. All of the reflections note the collaborative approach taken by all of the organisations across the county demonstrating that in a time of crisis we can work closely and co-operatively together to deliver much needed supports and services.

Even though I have been involved with the LCDC since its inception in 2014, I still find it quite daunting trying to gain a handle on the complexities of local government in Ireland, and the governance processes in South Dublin County within which the LCDC plays a role. The LCDC has a relatively low profile and undoubtedly, quite a number of people across the county are not all that sure what we do. To address this information deficit, we organised an event in November 2020 – “The Lowdown on the LCDC” as part of SDCC’s Social Inclusion Week. We wanted to create greater awareness of the LCDC, its mission, and the work that it does. The event involved the launch of the 2019 Annual Report; the launch of a short animation film which captures the role and function of the LCDC in an accessible way and two presentations on Community Development & Social Inclusion in South County Dublin from a data perspective and from a grassroots’ activist perspective.

For more information on this event and to view the short animation please check out <https://www.sdcc.ie/en/services/community/local-community-development-committee/>

We are very grateful for all those in the LCDC who contributed to the event.

We are grateful that because of the commitment and efforts of all our members and partner organisations, we continued to fulfil our function throughout the pandemic year of 2020. Thank you to all of those who gave their time professionally and in a voluntary capacity to ensure that was the case.

Mary P. Corcoran
Chairperson, LCDC, South Dublin County Council



2 | Members of the LCDC 2019-2020

Mary P. Corcoran, Community Representative and Chair South Dublin County LCDC



Mary P. Corcoran is Professor of Sociology at Maynooth University, and a graduate of Trinity College Dublin and Columbia University, New York. She has conducted research, and published widely, in the fields of urban sociology, public culture and the sociology of migration. She was part of the team that produced a seminal study of quality of life and social housing in Ireland, published as *Social Housing in Ireland: A study of Success, Failure and Lessons learned* (ed. Tony Fahey, 1999) and *Social housing, disadvantage and neighbourhood liveability* (ed. Michelle Norris, 2014). Most recently, her work has focused on the social and sustainability potential of urban agriculture initiatives, both in Ireland and internationally. A former Taoiseach's nominee to the National Economic and Social Forum (NESF), Mary has completed two terms as a member of Maynooth University's Governing Authority. She is a member of the Board of the Western Development Commission and the Childhood Development Initiative in Tallaght West. She has been a member of the LCDC since 2014. Her talk to Google workers in Dublin on Fostering Connection can be accessed at: <https://www.youtube.com/watch?v=Z9vEC59PHEA>

Justin Byrne, PPN Representative



Justin is Chief Operating Officer of the Irish Environmental Network and is the Chair of An Claoimh Glas, an environmental NGO active in the areas of planning, law, and the environment. He is on the Secretariat of South Dublin Public Participation Network (PPN) and on the LAG of the Dublin Leader Company. He also works with many Dublin based community organisations on environmental issues. Justin's background is in IT and communications and has worked in this field for several large companies both in Ireland and Abroad.

Marguerite Gallagher, Department of Employment Affairs and Social Protection



Marguerite Gallagher recently joined the Department of Employment Affairs and Social Protection. She is responsible for the successful delivery of the Department's Activation services across Tallaght and Clondalkin. Marguerite joined DEASP from the International Development sector where she spent 17 years designing and leading programmes in a variety of contexts including multiple humanitarian responses in Africa, the Middle East and the Caribbean. Marguerite holds a master's in development studies.

Councillor Alan Hayes



Alan Hayes is an Independent County Councillor representing Palmerstown Fonthill constituency. He has a background in youth work and taught Youth & Community Work to students at Liberties College, Dublin for 11 years. He also works for TUSLA as an Educational Welfare Officer. "I've enjoyed developing my understanding of the work of the LCDC, it's invigorating to have so many highly skilled and knowledgeable people volunteering their time to help bring about social change. I am excited at the prospect of a new five-year LECP as the current one expires in 2021 and I'm also looking forward to see what the new SICAP funding programme will look like after 2022. Above all else, I want to be a part of providing the framework for quality outcomes for the most disadvantaged communities across the County.



Andy Leeson



Andy Leeson was educated at UCD and has been employed by Foróige in Tallaght since 2003 in a variety of different roles. He is currently the Area Manager for Foróige services across Dublin South. Andy's work with Tallaght Youth Service has included establishing new voluntary youth clubs, providing training and support for youth work volunteers, coordinating projects, events and programmes for young people.

Over the years, Andy has facilitated programmes that have encouraged young people to engage with their community, learn new skills, use technology creatively and promote positive mental health with their peers. Andy's work is focussed on ensuring that supports are available for the most marginalised and at-risk young people and that young people's views are represented and they can have a say in decisions that affect their lives. It is important that young people and parents are aware of the opportunities that exist for young people to engage in youth work programmes, whether through their local youth club, youth café or community-based project Andy believes that the LCDC can underpin strong and effective collaboration in Community Development, building on the excellent work being done by agencies and organisations at grassroots level across South Dublin.

Aiden Lloyd, PPN Representative



Aiden Lloyd is chairperson of the Rights Platform in South Dublin, a community network using human rights-based approaches to tackle poverty and social exclusion. He is a former national community development & equality coordinator with ADM/Pobal, the agency that managed social inclusion, local development and equality programmes for government and the EU. He is also a former coordinator of the European Anti-Poverty Network Ireland. He has worked at a range of levels in community development, youth work and local integrated development. He was instrumental in the development and implementation of several significant initiatives on regeneration, social economy and

social inclusion, including the EU URBAN initiative in South Dublin, the national Local Development Social Inclusion Programme and the National Action Plan against Racism. He has contributed to the development of policy strategies for the community sector in national agreement negotiations and has been a member of several departmental committees on matters of community development, social inclusion and anti-racism. He continues to be involved in matters of social inclusion and human rights training in a variety of national and European settings and in formative community/youth work training in Maynooth University.

Tricia Nolan, PPN Representative



Tricia Nolan is manager of South Dublin County Volunteer Centre. Tricia has been with the volunteer centre since its foundation in 1998. She has a passion for volunteering and has been instrumental in driving forward the development of a national volunteering infrastructure. She sat on the national committee on volunteering from 2000 – 2002 and was part of the subcommittee tasked with writing "Tipping the Balance" which laid the foundation for the present volunteering infrastructure in Ireland. She currently sits on the national volunteering strategy group that is developing a new National Volunteering Strategy. Alongside this, Tricia was instrumental in setting up I-VOL (the National

Volunteering Database) and continues to lead on its development nationally.



Larry O'Neill, SDC Partnership



Larry O'Neill, is the CEO of South Dublin County Partnership CLG and has been employed by SDCCP and CPLN since 2005. He commenced his career in community development in the early 90s as CEO of Wicklow Rural Enterprises. He was a founding director of Horse Sport Ireland and served as Director/ Chair of ILDRA CLG the National Governing Body for Endurance Riding in Ireland. Larry is a graduate of UCD (MBA) and has been involved in Social Enterprise in the South Dublin Area for over 15 years; has served as Chair of Oakfield Trust; Chair and founding Director of Recreate and director of Recycle IT CLG. Larry is a member of the National Social Economy Implementation Oversight Body

Established by the Government and Chairs the Irish Local Development Network Social Economy committee.

Councillor Kieran Mahon



In second term as an elected Councillor for Solidarity and the Socialist Party in Tallaght Central. I have been sitting on the LCDC since 2014. I am a member of The Housing Strategic Policy Committee on SDCC advocating for increased provision of, and access to, social housing to bring security of tenure to communities in South Dublin County Council. Former Volunteer Adult Literacy Tutor with Basic Education Services Tallaght (NALA). Campaigner for protection and expansion of services including education, integration and workers' rights that can assist with local community development and social inclusion.

Deirdre McKeon, Dublin and Dun Laoghaire Education and Training Board



Deirdre McKeon, currently Training Centre Manager of Tallaght Training Centre, Dublin and Dun Laoghaire Education and Training Board. She has a long career working in the education and training sector - AnCO, FAS and DDLETB. She has a Masters in Adult Learning & Development, Degree in Training & Education, Dip in Management and recently completed a Dip in Technology Enhanced Learning and fully embraces Life Long Learning for all. Tallaght Training Centre provides relevant full-time, p/t, online and night courses in a variety of disciplines for the local community.

Councillor David McManus



David McManus was elected as a Councillor in May 2019 for the Rathfarnham Templeogue district on South Dublin County Council. He was born and raised locally and graduated from UCD in 2012. Since then, David has worked in the public and private sectors, in management and communications, with an emphasis on hard work, commitment and results. David is passionate about community development and social inclusion and utilising the Local Community Development Committee to its full potential.

Dr Phil Mulvaney, Community Representative TU Dublin-Tallaght



Dr. Phil Mulvaney is an Economist. She has lectured in Economics and related fields, including Public Administration and Public Sector Economics. She is currently Head of Strategic Projects at TU Dublin-Tallaght and has initiated several projects to advance the University's role in the area of civic/community engagement. Phil is a member of the South Dublin Local Community Development Committee (LCDC) since 2018 and has been involved in the community and voluntary sector for well over two decades. She is currently engaged in a collaborative research project to undertake An Audit and Profile of the Community Development Sector in South Dublin County. It is hoped that this research will provide a knowledge base that will inform the future Local Economic and Community

Development Plan (2022-27), helping to identify the needs of communities, propose solutions and support an integrated approach to development at local level.



Padraig Rehill, Health Service Executive



Has spent entire career in Eastern Health Board and Health Service Executive. Currently Operations Manager in Mental Health having previously worked as Supt Community Welfare Officer and Social Inclusion Manager. Has a BA and H. Dip in Ed along with an MA in Adult Education. Previously chair of Clondalkin Partnership and joint chair of SDCC Partnership while currently a Board member. Is the HSE nominee on LCDC. Hopes for LCDC are that it will continue to act as a unifying force in bringing all agencies together to effect positive social change.

Tom Rooney, South Dublin County Council



Tom Rooney, Head of Enterprise at South Dublin Local Enterprise Office since 2019, Tom was previously Manager of the Synergy Innovation Centre at Technological University Dublin (Tallaght Campus) and Synergy Global Citywest. Tom has a strong interest in entrepreneurship and a deep knowledge of the enterprise support and development ecosystem in Ireland. A Qualified Accountant and International Marketing Graduate, Tom has also completed an MSc in Executive Leadership at the University of Ulster in 2008 and studied the Entrepreneurship Education Programme at Dublin City University in 2014. Tom held senior management roles as General Manager Kingspan Renewables (Ireland) and Regional Commercial Manager Cemex (Ireland). Previous roles in Sales & Marketing were within National and International B2B environments operating in competitive market sectors. Tom brings his knowledge of strategic thinking, change management, team building, brand positioning and excellent customer relations and communications skills to the current role in the Local Enterprise Office.

Gerry Stockil, PPN Representative



Gerry is a lecturer in Electronic Engineering at TU Dublin Tallaght Campus. He is a member, and past chair, of Tallaght Community Council. He has experience in the Irish electronics industry, and has worked in Germany, the UK and China. He lives in Tallaght and is married with four children. He sees the PPN (Public Participation Network) as a long game changer in community participation but PPNs need to be better funded, for the role it plays, over the years, in organisations like the LCDC and other council committees to be strengthened. He has an interest in access to third level education for all who want it. He hopes to see all council meetings in SDCC broadcast very soon and wants to see planning improving in a quantitative manner so that poverty traps may be avoided and there is total transparency in the planning process. He sees better planning and sensible housing provision in all parts of the county, as well as continuous improvement to educational access, as key ingredients in improved local community development. This will enable the positive work that the LCDC does to become more targeted as better planning reduces poverty traps.

Maurice Walsh, PPN Representative



Maurice's career spans 15 years in the private shipping and transport sector followed by 30 years in the public sector with AnCO/FAS where he held several roles in the operation and management of training, employment, community development and CPD programmes. He has extensive community development experience having worked closely with the Clondalkin and Tallaght Partnerships, SDCC CDB, Lucan2000, various other community groups and was responsible for the development of the employment action initiative known today as L.E.S./Obair. He took up a managerial position in 2012 with Lucan Disability Action Group which he represents on the S.I. Pillar of the South Dublin County Public Participation Network. Maurice was actively engaged with the SDCC in the setup and establishment of the PPN. He has served two terms as a S.I. rep to the PPN Secretariat and is currently in his second term as S.I. rep to the LCDC and other related sub-committees. Maurice is very committed to the LCDC/PPN structure and believes that it is an effective and integrated model to give effect to and support local and community development.



Colm Ward, South Dublin County Council



Colm is a member of the South Dublin LCDC since 2015 and is strongly committed to the strategic development of the Committee. He is currently Director of Housing, Social and Community Development with South Dublin County Council. Holding an BA in Public Administration and an MA from NUI in Local Government Management, Colm also has over 23 years of experience in local government in various areas including enterprise support, procurement, financial management, housing, and environmental services.

Brian Hora, South Dublin County Council Chief Officer



Brian Hora has worked in the local authority sector since graduating from University of Limerick with a BA in Public Administration in 2001. In 2007 he completed a MA in Local Government Management. He joined South Dublin County Council in 2016, having previously worked in Westmeath and Cavan local authorities, where he is Chief Officer of the LCDC and is a Senior Executive Officer.



3 | Introduction

In 2020 the Covid-19 pandemic broke and this forced the LCDC to operate differently. The SICAP programme was significantly affected with the SDC Partnership extensively supporting the Community Call response. Voluntary and community agencies all had to adapt, moving in many cases to online or virtual activities and support, (for examples see our COVID Reflections throughout this report).

The South Dublin County LCDC continued its work in coordination, planning and overseeing local and community development funding and worked with the SDC Partnership to maintain and refocus as necessary the SICAP programme.

Funding through the Community Enhancement Programme remained the responsibility of the LCDC and in 2020, some 78 community groups benefited from Community Enhancement Programme (CEP) funding totalling €360,962.84. The CEP primarily provides funding to community groups to enhance facilities in disadvantaged areas.

In addition, the LCDC has a role in the coordination of the Healthy Ireland Fund. Following a successful application submitted to POBAL in September 2019, €246,050 has been awarded for the County's Healthy Ireland Programme 2019-2021.

A key responsibility of the LCDC is oversight of the Social Inclusion and Community Activation Programme (SICAP). SICAP provides funding to tackle poverty and social exclusion and actions are delivered by South Dublin County Partnership. The 2020 end of year review by POBAL reported that all the revised targets were achieved including the submission of a video case study which looked at the response to Covid 19 Community Call.

The LCDC also has responsibility for progression of the Community elements of the 6 year Local Economic and Community Plan (LECP), and development of Dublin Rural LEADER programme. Projects in Newcastle, Bohernabreena and Glenasmole have benefited from LEADER funding, while community centre projects in Glenasmole and Saggart progressed in 2020 and are expected to benefit from up to €1million.

Finally, as noted in the Chairperson's introduction, the LCDC addressed the need to improve the public profile of the LCDC by producing an animation, launching our 2019 Annual Report, and hosting a webinar on Community Development and Social Inclusion. We hope to organise further profile building events in the future.

REFLECTION ON COVID 1

South Dublin COVID-19 Community Response Forum



In response to Action 4 in Ireland's National Action Plan in Response to COVID-19, South Dublin County Council was mandated to establish a multi-agency South Dublin COVID 19 Community Response Forum. This Forum was established on Saturday 28th March 2020 in line with national guidelines and met weekly through video/tele-conferencing during the early months of the pandemic.

The Community Response Forum membership was: Mayor's Office, Public Participation Network, ALONE, South Dublin County Council, An Garda Síochána, An Post, South Dublin County Partnership, South Dublin LCDC, Civil Defence, South Dublin Volunteer Centre, Crosscare, Tus Nua, Traveller Support Groups, Dublin GAA, Tusla, Health Service Executive, Dept. of Social Protection and Community Affairs/Community Welfare. The Forum was chaired by South Dublin County Council Chief Executive, Daniel McLoughlin.

Role of the forum: The overall objective of the South Dublin Community Response Forum was to facilitate and co-ordinate the most appropriate community response to the needs of vulnerable people living in the community where their usual sources of support become unavailable. It was specifically established to lead the co-ordination of COVID-19 community supports and resilience, including:

- Forum members and organisations working collaboratively (including with third party organisations) to identify vulnerable groups and individuals in South Dublin County.
- Ensuring delivery of targeted social care supports and assistance to those vulnerable groups and individuals.
- Identifying issues arising through Tus Nua / Older Persons Council, South Dublin PPN, community and other groups, and helpline calls.
- Helping vulnerable individuals in isolation.
- Ensuring the resilience of existing community services.
- Harnessing offers of assistance from enterprises/businesses generally; and,
- Collecting and mapping information on services and voluntary groups across the Country to help direct requests for assistance and identify gaps in service.

COVID-19 Support Help Line: The Forum set up a dedicated Community Call Helpdesk operated 7 days a week jointly by the Council's Community Department and South Dublin County Partnership that could be contacted by email or by calling a freephone number. Between 30th March 2020 when the helpline opened and the 15th April 2020, 1062 contacts were received with 99% completed in that time frame, 70% of contacts were completed on the same day. For the four-week period 30th March to 26th April 2020, all contacts had been resolved.

Mapping of community, sporting and voluntary across the county and launch of COVID 19

Emergency Fund to support their efforts: Existing community, voluntary, sporting and other organisations in the County were asked to provide details of the resources and supports they could offer to the Forum by completing an on-line survey.

To support community and voluntary groups involved the delivery of COVID-19 community response efforts the Department of Rural and Community Development established a €2.5m COVID-19 Emergency Fund, which was administered by South Dublin County Council who were allocated €105,000.

Other initiatives included:

- 1,617 calls made under the Community Call “Callout” initiative. This initiative was to make vulnerable households aware of the Community Call and respond immediately to any issues or concerns raised.
- Over 200 school meals delivered to families in need through the county with the assistance of An Post.
- Correspondence to pharmacies across the County to advise of supports available for emergency delivery of medication to vulnerable customers.
- Over the phone bereavement counselling services for those who have suffered the loss of a loved one
- Promotion by the Forum of the An Post Request a Check Initiative
- Coordinated and streamlined volunteer management process with South Dublin Volunteer Centre and voluntary organisations responding to COVID19 Support Helpdesk requests for support
- Referrals to and From ALONE services
- Support and promotion of the Volunteer at Home Initiative
- Promotion of online mental health and wellbeing activities

Community Call “In This Together”: On Friday 24th April 2020 Government launched the next phase of the Community Call “In This Together” well-being campaign to help everyone stay connected, stay active and stay mentally well. South Dublin County Council and the Community Response Forum offered a range of activities and resources as part of the “In This Together” initiative including:

- SDC Sports Partnership live exercise classes
- The Libraries Borrow Box
- Online music classes with Music Generation
- 5-minute crafts with our Library service
- Age Friendly News
- Bouncing baby book club
- LEO online courses and business supports

In This Together also drew together the huge range of advice and support that is available online for people of all ages, including:

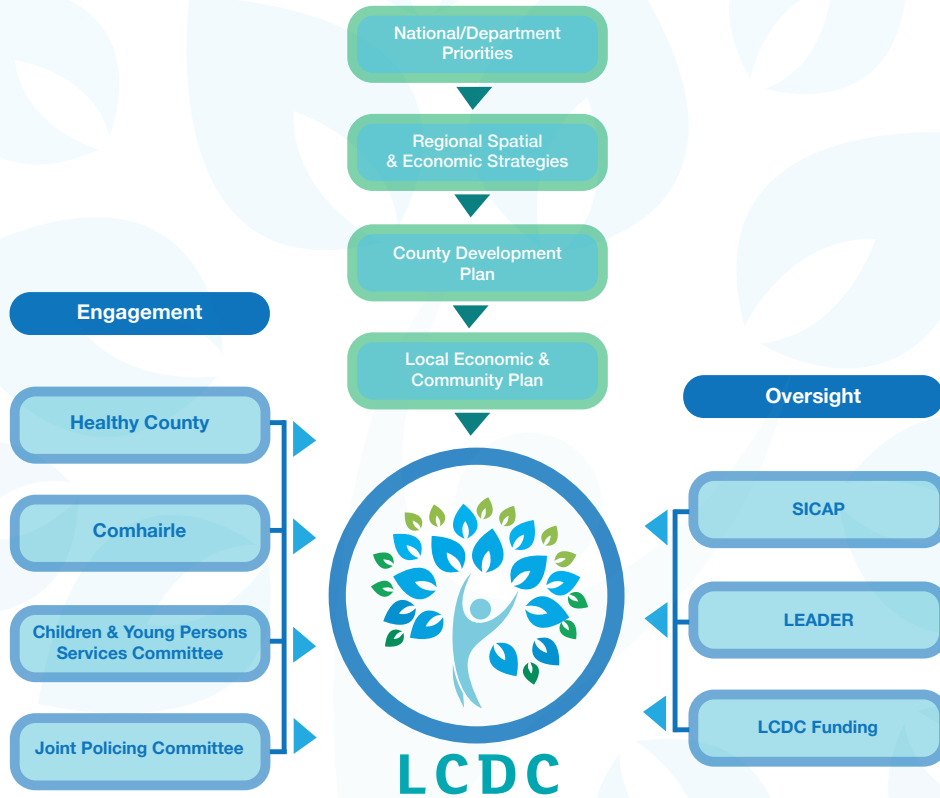
- Mindmindr app
- Mental Health Facebook talks
- Promotion of our parks and getting back to nature
- Volunteer from Home initiative
- 4 the Family support programme
- Crosscare Youth Information Chat Service

Brian Hora, LCDC Chief Officer



4 | Membership

Membership and Organisational Structure of the South Dublin County LCDC



The membership of the South County Dublin LCDC is drawn from community representatives, state agencies and local authority elected members. The membership of the LCDC and attendance at meetings is set out in Appendix 1.

The following members left the LCDC in 2020. The Committee express their thanks to them for their valuable contributions during their membership:

- Aiden Lloyd
- Gerard Stockil
- Maurice Walsh



Members of the LCDC

Backrow L-R Andy Leeson, Colm Ward, Padraig Rehill, Deirdre McKeon, Marguerite Gallagher, Aiden Lloyd, Thomas Rooney, Cllr Alan Hayes, front row L-R] Brian Hora, Larry O'Neill, Mary Corcoran and Phil Mulvaney.



5 | Report of LCDC Meetings in 2020

There were four meetings of the LCDC in 2020 (See appendix 1).

Meetings in 2020 covered a range of issues including the following:

■ LCDC Governance:

- Comhairle na nÓg and the LCDC
- LCDC Audits
- Diversifying Membership of the LCDC
- LCDC Annual Report
- LCDC Conference/ Promotion
- LCDC Event Report Back

■ SICAP

- End of Year Report 2019
- Case study
- Annual Plan
- 2020 Mid-Year Report
- 2020 Covid 19 Response
- SICAP 2020 Mid-Year Check & Revisiting Targets for 2020
- SICAP: Case Study “South Dublin County Community Call”
- 2021 SICAP Annual Plan
- Internal Audit Report: SICAP 2018

■ Funding

- Funding Updates
- Healthy Ireland Community Mental Health Small Grants Scheme 2020
- Social Enterprise Funding Opportunities
- Community Enhancement Programme (CEP) 2020 Rounds 1 & 2

■ LECP

■ LEADER 2014-2020 Updates

■ Presentations & Other reports

- Update on Community Call Initiative
- Community Development in South Dublin County



6 | Report of LCDC Subcommittee meetings in 2020

The South County Dublin LCDC has several subcommittees that focus on aspects of its work.

SICAP Oversight Subcommittee

The SICAP Oversight Subcommittee was established in November 2016 to have an oversight on the SICAP contract and report to the LCDC.

Funding Subcommittee

The Funding Subcommittee has oversight of and report to the LCDC on funding allocated to the LCDC. There were two rounds of the Community Enhancement Programme for which the LCDC had responsibility for in 2020.

Public Sector Duty Subcommittee

Public Sector Duty Subcommittee is delegated by the LCDC to consider how to progress the Public Sector Duty in relation to the LCDC and the Local Economic and Community Plan, it didn't meet in 2020.

Conference Subcommittee

This was a new subcommittee formed to progress publicity and information regarding the LCDC and to arrange an inclusive event to discuss the work of the LCDC and to consider issues of community development.

REFLECTION ON COVID 2

Tallaght Drug and Alcohol Task Force (TDATF)



2020 was certainly a challenging year for the work of Tallaght Drug and Alcohol Task Force (TDATF) and community addiction services generally. However, it also proved to be a year in which huge learning took place and versatility was demonstrated. Moreover, the importance of interagency working was certainly reinforced. The Covid 19 pandemic emphasised the importance of protecting the most vulnerable, and served as a reminder of just how valuable and “essential” our frontline community drug projects are.

Impact of Covid 19 on frontline community Drug Services: At the end of 2020 TDATF invited projects to complete a survey about the impact of Covid-19 on their operations and staff; seven projects responded to the survey. The main issues for services had been the severe pressure on staff resources, how staff roles had to change and the impact which restrictions had on the mental health of clients and staff members. The findings confirmed that clients struggled with their recovery and felt isolated. The survey was helpful and important in highlighting how hard frontline community drug services worked during this crisis to maintain support for their vulnerable clients in whatever way possible.

Poly Drug Use: The poly drug use culture in some parts of South Dublin County continues to escalate and is constantly changing. TDATF continues to highlight the need for the HSE Addiction Services to move to a more poly drug use focused response to substance misuse.

Alcohol: The pandemic had shone a light on the national and longstanding epidemic which is alcohol misuse. In 2020, just before level 5 restrictions were introduced, we were able to commence a pilot alcohol treatment programme within the remit of our Community Action on Alcohol programme. The pilot was run by TDATF, in partnership with Tallaght Addiction Support Project (TASP) in Fettercairn. Unfortunately the pilot was cut short due to Covid 19 restrictions but worked well enough for the weeks it did run to warrant it's inclusion in TASP's menu of programmes going forward.

Crack Cocaine: In 2020, TDATF continued to highlight the impact of crack cocaine use, and related issues, on the communities they serve. Since 2018 we have been delivering a designated support programme for crack users in two targeted areas in Tallaght. JADD run an out of hours support programme for crack users, this includes a Saturday group for women, many of whom are involved in sex work. JADD managed to keep these vulnerable groups engaged throughout 2020 and impressively, during a pandemic, assisted by their on-site childcare service.

The second programme, CARP is targeted at women who are 18 years and over who are in need of harm reduction, intervention and / or brief respite. Equally, CARP managed to maintain support to this group during 2020. Both programmes require permanent funding to make them sustainable going forward. We hope that we can secure a funding commitment from the relevant government Department to make that happen.

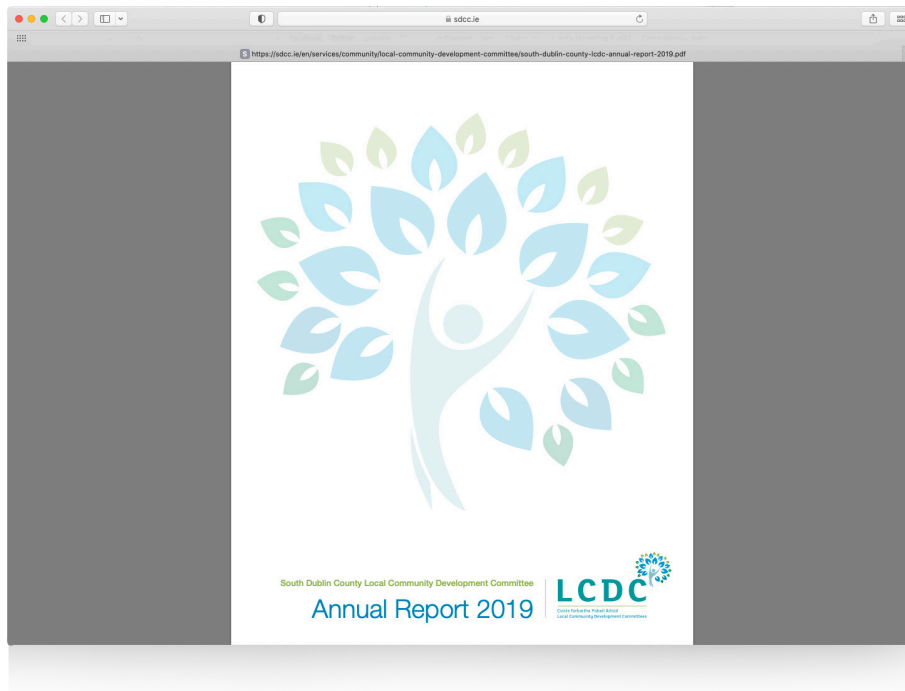
Grace Hill, Tallaght Drug & Alcohol Task Force



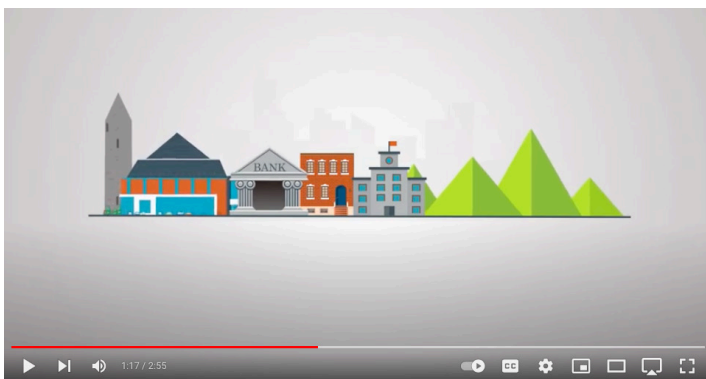
7 | The Lowdown on the LCDC

The LCDC Held an online event **“The Lowdown on the LCDC”** on the 18th November 2020, at this event:

- The LCDC Annual Report was launched and it can be viewed on the LCDC Webpage here:
<https://sdcc.ie/en/services/community/local-community-development-committee/south-dublin-county-lcdc-annual-report-2019.pdf>



- The event also premiered a short YouTube animation on the LCDC:
https://www.youtube.com/watch?v=_o7IPeDBbWQ&feature=emb_logo



Interim Research on Community Development in South Dublin - Paula Donovan

- Hosted a presentation from Paula Donovan on “Interim Research Findings on Community Development in South Dublin County”
https://www.youtube.com/watch?v=JrrtO8TvhJw&feature=emb_logo
- Hosted a presentation from Paula Haverty and Noreen Byrne on the “The Impact of Social Exclusion”
[LCDC-5--Paula-Haverty-Presentation.pptx \(size 19 MB\)](#)

REFLECTION ON COVID 3

Foróige



2020 was a year that challenged everyone like never before. Foróige was involved in collective responses, with LCDC, CYPSC & PPN members that identified and supported vulnerable families and young people. Very quickly the challenges presented by Covid 19 became obvious in terms of the impact on young people, their social interactions and their mental health.

Maintaining connections and support for young people was our top priority and we quickly moved our youth engagement online, offering a vast range of online programmes and activities that ranged from cookery, to quizzes to ukulele lessons!

LCDC and other interagency meetings moved online and there was a real determination amongst members to pull together collectively to respond to those in need. Information, funding and resources were shared, and plans put in place to support communities. Collectively families in need were identified and food and activity parcel deliveries were arranged.

It became apparent very quickly that many young people did not have access to the required technology or resources to engage in online education meaningfully. The risk of increasing educational inequality was clear and obvious. Working closely with partner agencies and organisations we were able to source funding to establish a laptop & tablet loan scheme for young people for the duration of the Covid-19 emergency shutdown of schools. Foróige reconditioned 14 existing laptops based across their offices. South Dublin CYPSC provided funding of €4,000 to purchase eight new laptops. Two of these laptops were allocated for use within family hubs in the County.

The pandemic showed us that established ways of working could be quickly adapted when the desire and need exists and working together towards a common purpose allows work with real impact to be carried out effectively and efficiently.

Andy Lesson, Foróige



8 | Report of SICAP (Social Inclusion Community Activation Programme)

A key responsibility of the South County Dublin LCDC is oversight of the SICAP (Social Inclusion Community Activation Programme). A funding allocation of €2,169,313 was received from the Department of Rural & Community Development in 2020.

The current SICAP (2018-2022) contract was tendered in 2017 and the contract was awarded to South Dublin County Partnership (SDCP). 2020 was the third year of the current contract and South Dublin County Partnership (SDCP) has successfully achieved both KPIs included in SICAP contract:

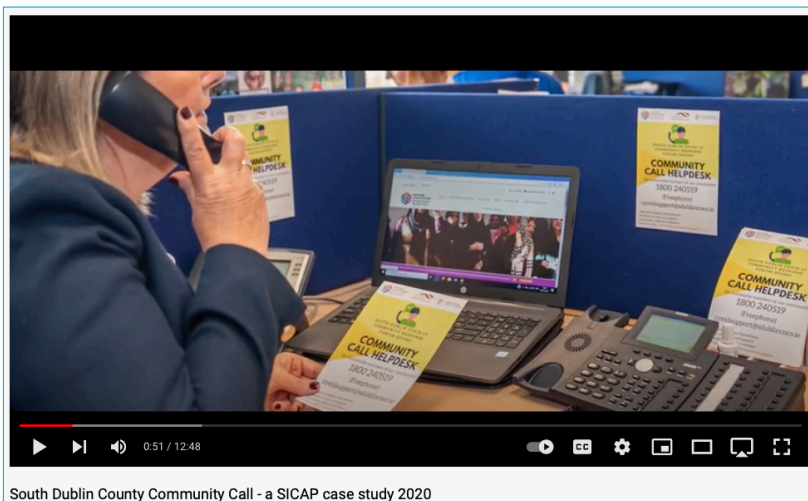
1. Meeting the Annual Targets	Achieved	% Achieved
Achievement of KPI 1 Target 75	83	111%
Achievement of KPI 2 Target 890	897	101%
Achievement of % KPI 2 from disadvantaged areas Target 41%	34.04%	

34% in disadvantaged areas: is below the target but this target has been affected considerably by Covid 19. It should be noted that work with disadvantaged communities is harder online due to deficits in access, space, and skill sets. Through Community Call and in conjunction with the local authority SDC Partnership dealt with over 2,500 emergencies in 2020

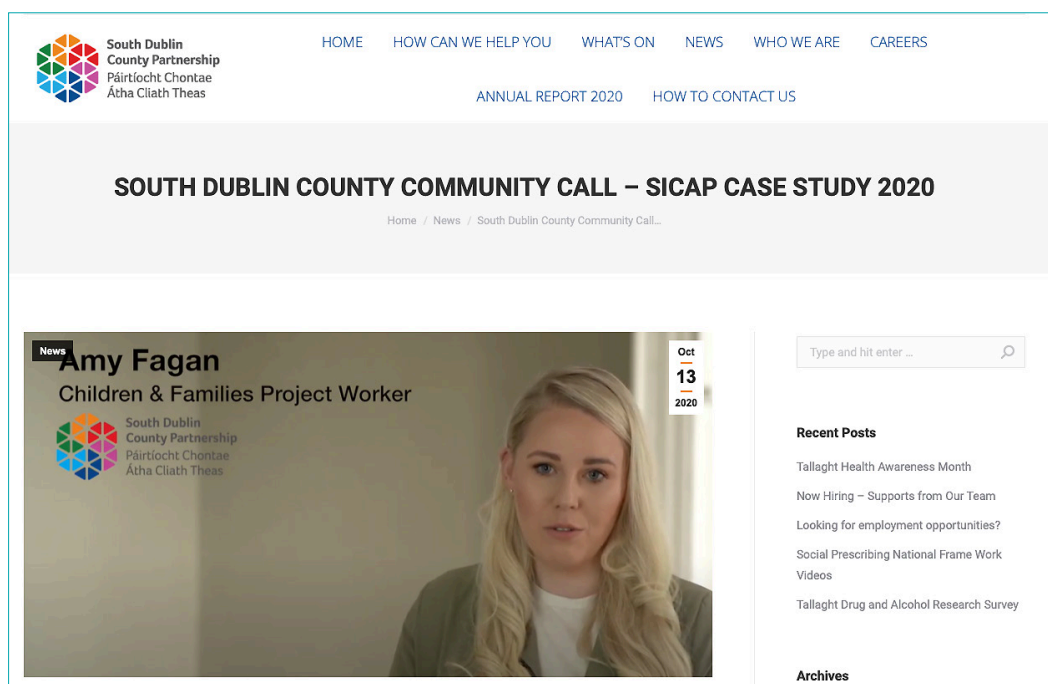
During 2019, the 2018 SICAP was subject to an audit by both South Dublin County Council Internal Audit Department and the Local Government Audit Service on behalf of POBAL. The 2018 audit report was considered by the LCDC in 2020 and the 2019 report will be considered by the LCDC in 2021.

Case Study for 2020

The SICAP Case Study on the work of SDC Partnership in responding to the COVID-19 pandemic was considered and ratified by the LCDC at its meeting held on the 4th November 2020.



<https://www.youtube.com/watch?v=Cz09H7qYFRs>



<https://sdcpartnership.ie/2020/10/13/south-dublin-county-community-call-sicap-case-study-2020/>

Key Performance Indicators

The following table sets out the key performance indicators, emerging needs and case studies for SICAP 2018-2020

	South Dublin County (Lot 3-1)			
Area	2018	2019	2020	2021 proposed
KPI 1	97	97	75	82
KPI 2	1483	1483	890	1,112
Emerging Needs Target Group	The Homeless	The Homeless	The Homeless with an increased focus on Roma Homeless	Single parents and mental health
Case Study	Goal 2: “Development of Stagecraft Musical Group”	Goal 2: “4 the Family”	Goal 1 & 2: South Dublin County Community Call-SICAP Case Study 2020	TBC

REFLECTION ON COVID 4

South Dublin Volunteer Centre



Volunteering during pandemic times: In South Dublin County, from March 2020, from a volunteering perspective, we saw a replication of what was experienced in all communities across the country i.e., a willingness of huge swathes of people to put their hands up and come forward to volunteer to help in their community. In South Dublin County, our volunteer centre saw over 1000 people register to volunteer on I-VOL (the national volunteering database) during the first couple of weeks in March 2020. This presented its own problems as, whilst people were really anxious to help, most of the community groups that would traditionally involve volunteers closed their doors (including youth clubs, after schools' programs, sports clubs etc.) So, we were faced with a supply and demand problem in that we had a huge supply of volunteers and on the other side – a lack of demand as people were encouraged to “stay home”. Not everyone who wanted to help was able to help due to lack of supply. This did end up with some disappointment and frustration for potential volunteers, but what was glaringly obvious, from the outpouring of support and willingness to give, was that the Irish spirit of “Meitheal” was alive and well in our County.

South Dublin Volunteer Centre Initiatives: South Dublin Volunteer Centre was involved in particular initiatives that were launched that involved large groups of volunteers on the frontline including the Community Call (an initiative to provide supports to those cocooning), our #volunteerfromhome campaign, #criticalll (an initiative for those emerging from domestic violence situations), online training on best practice in volunteer management for community groups and the volunteering COVID Test Centre program.

Test Centre Program: In South Dublin, there were two community Testing Sites established by the HSE – in Tallaght Stadium and Lucan Sarsfield's GAA club. The Volunteer Centre (through its volunteer corps program), recruited over 100 volunteers from those who registered on IVOL to lead a meet and greet and stewarding service in both of these sites in South Dublin County. From March 2020 onwards, the Volunteer Centre provided a direct volunteer management service to the testing sites, including recruiting, scheduling and managing this large cohort of volunteers. With the amalgamation of Tallaght Stadium and the Lucan site into one site in Citywest- the volunteer program continued from strength to strength with over 300 volunteers now involved in the program. Those volunteering represent all sectors of Irish Society including members of our new communities, students and teachers, those who are retired and those just starting out in their working life – people from all walks of modern Irish life participated (and continue to participate). It's a true testament to the volunteers (and the program itself) that the program is still ongoing 18 months after the initial beginnings in Tallaght Stadium and has never lacked for volunteers despite operating 7 days per week (including through Christmas and Easter).

In conclusion: All across South Dublin during the COVID-19 crisis, the response of the ever larger and more diverse volunteer community was tremendous - from food and medicine carriers to dog walkers, letter writers, book couriers, COVID-19 test centres volunteers and initiatives for victims of domestic violence. The diligence, generosity and empathy demonstrated by those willing to get involved was inspiring. “In years to come, let them say of us, when things were at their worst, we were at our best.” An Taoiseach Leo Varadkar T.D., 17th March 2020

For more on South Dublin Volunteer Centre check out <https://volunteersouthdublin.ie/>

Trish Nolan, South Dublin County Volunteer Centre



9 | Local Economic and Community Plan 2016-2021

The Local Economic and Community Plan was agreed at a joint meeting of the LCDC and the Economic Strategic Policy Committee (SPC) held on the 22nd October 2015, ratified by the Eastern & Midland Regional Assembly on the 13th November 2015 and adopted by South Dublin County Council's Full Council on the 14th December 2015. The LCDC has engaged with the Plan both in terms of monitoring progress and being able to champion issues and themes. The Community elements of the South County Dublin LECP are listed in Appendix 4.

10 | LEADER Programme

LEADER covers the rural areas of South Dublin County (the electoral districts (EDs)) of Newcastle, Rathcoole, Saggart, Ballinascorney and Bohernabreena. Following agreement between South Dublin County Council, Fingal County Council and Dún Laoghaire-Rathdown County Council, 5 members of the LCDC were selected to sit on the Rural Dublin Local Action Group for this round of LEADER Rural Development funding.

The 5 members are:

- **Prof. Mary P. Corcoran** (Community, Maynooth University)
- **Tricia Nolan** (PPN Community Pillar)
- **Justin Byrne** (PPN Environment Pillar)
- **Cllr David McManus**
- **Colm Ward** (SDCC)

The Committee met on:

- 5th February 2020
- 22nd October 2020
- 3rd December 2020

In addition, the LAG is supported by the LAG Monitoring Group and its membership includes Colm Ward and Cllr David McManus

The Committee met on:

- 29th January 2020

LAG Evaluation Committee: This committee evaluates recommendations for funding from the Programme implementer and then makes recommendations to the LAG membership is drawn from the three counties.

Progress on LEADER projects is set out in Appendix 4

REFLECTION ON COVID 5

South Dublin CYPSC COVID-19 Supports



The Covid-19 pandemic impacted directly on all agencies' work and priorities. The various restrictions which took place during 2020 required CYPSC members to provide their services differently. This included organisations working remotely providing services through new channels such as online and other platforms. Responding to the emerging needs of children, young people and their families required innovation and flexibility from all organisations. South Dublin CYPSC continued to meet during 2020 on a remote basis ensuring members continued to focus on emerging needs arising from the pandemic along with work on the implementation of the three-year Children and Young People's plan.

Key Issues: CYPSC members identified emerging Covid-19 issues within the County particularly in relation to restrictive measures. During 2020 Ireland moved from a short-term emergency response approach to a medium-term approach to managing risk and repairing the damage that COVID-19 has inflicted on society. A Framework for Restrictive Measures has been developed to help us to go about our daily lives as much as possible, while managing the behaviour of the virus. The restrictions have placed additional stresses on families. The range of issues considered by South Dublin CYPSC and its sub-groups have included the following:

Mental health supports and access to services: The impact on Irish teens specifically is only beginning to emerge. Jigsaw, the youth mental health service has reported an increase in demand. Face-to-face counselling rose 47% in July 2020 on the same month in the previous year, and 46% in August 2020. The highest number of referrals was in the 15- to 17-year-old age cohort. Family problems became one of the top five presenting issues, and anxiety and low mood, relationship issues; young people who are struggling with sleep are some of the reported referrals. Research by the CSO published in July 2020 highlighted the direct impact on young people's mental health and wellbeing, one in three young adults felt downhearted or depressed "at least some of the time" (CSO July 2020).

Education: The Impact of school closures and the uncertainty around the Leaving Certificate 2020 caused increased anxiety for young people. The disruption of learning will have a greater impact for some especially for more disadvantaged children and young people. Traditional transition approaches from pre-school to primary and primary to post primary were impacted by the restrictive measures. This required new approaches to support children and young people. The impact of the restrictive measures for children with additional needs and their families was particularly pronounced. This included children suffering from a lack of routine, with the disruptions to their daily routines having a significant negative impact for them. Children's behaviour and social skills regressed during the period of social isolation, and it negatively impacted their mental health.

Economic Impact: There are over 100,000 children experiencing food poverty in Ireland currently and recent research from the ESRI suggests that child income poverty rates could rise as high as 22%, a one-third increase relative to the start of 2020. Financial pressure and job losses within families resulting from Covid-19 have potentially damaging effects on young children. In response to this several initiatives took place in the County to address food poverty, including The Children's Rights Alliance food provision scheme for children under the age of 6 experiencing poverty and disadvantage during Covid-19.

Domestic Violence: Domestic violence directly impacted children and young people during 2020 when there was an increase in the number of referrals made during the lock down. Under Operation Faoiseamh, a dedicated operation targeting violence in the home during the pandemic. Gardaí received 22,540 reports of domestic violence and related crimes from March 12th to November 3rd, 2020 up almost 17% on the same

period in 2019. Tusla Referrals on domestic violence within the Dublin South West area increased by 171% on the same period in 2019. In response to this, a short information document was developed on Tusla supports in the community and shared with CYPSC members and the Community Call forum. This included details on CFSN Co-ordinators in the County and local Tusla supports.

Family supports: Services delivering frontline supports reported increased demands. New responses and supports had to be put in place to operate within the restrictive measures. There was an increase in demand for mental health supports, food and essential home supplies, activity packs for families, and check-in calls for vulnerable and isolated members of local communities. Of particular concern were the homeless families who were living in family hubs or emergency accommodation and children within direct provision centres, who had less access to developmental opportunities, play and recreation and social activities.

South Dublin CYPSC Supports: During the initial restrictions put place in March 2020, South Dublin CYPSC established an online information hub; this provided all agencies with access to the various resources, materials and supports which were developed by organisations at the start of the pandemic. This resource remains in place and is updated as new information becomes available from a member organisation. The hub acts as one reference point for information to reduce the volume of information being circulated via email. Furthermore, South Dublin CYPSC supported several specific projects which sought to address some of the emerging needs of children and young people in the County. This included food poverty, the digital divide, impacts of the pandemic on families in emergency accommodation and other vulnerable groups. In response additional funding was set aside to support small scale initiatives responding to these needs, such as:

Quarryvale Family Resource Centre: On behalf of North Clondalkin Child and Family Support Network, Quarryvale FRC developed a proposal for funding towards 'Activity / Fun Packs'. As an initial response the network commenced work via a food initiative to meet the needs of families. During the early days of the pandemic the needs of families constantly changed. In response to this the network members added a further initiative to help some families by providing a 'Fun Pack' for 250 children and young people. This pack included four items per child (age appropriate) and took into consideration the current situation and the restrictions.

Tallaght Travellers Community Development Project Arts Project: South Dublin CYPSC provided funding to Tallaght Travellers CDP to support an arts project for traveller children during the pandemic. This funding supported the purchase of art materials and production of a booklet. This project supported traveller children through an art project to increase awareness of the impact of the pandemic, their families, and the community they live in. The initiative asked children to visualise what they are looking forward too after the restrictions.

South Dublin CYPSC and Sligo Leitrim CYPSC Collaborative Project: South Dublin CYPSC and Sligo CYPSC working collaboratively with the National CYPSC Office and Foróige to develop a proposal to create and deliver a youth-specific Covid-19 risk reduction campaign designed by young people for young people. Funding of €27,000 was provided through the National CYPSC Office and Department of Children, Equality, Disability, Integration and Youth to support the development of a national online campaign. This campaign will seek to support young people's physical and mental health and wellbeing during a time of public health restrictions; and will provide clarity for young people using positive messaging and an emphasis on what young people CAN do. CYPSC was also a participant in the Community Call (See COVID REFLECTION 1).



11 | LCDC Funding 2020

Social Inclusion Community Activity Programme (SICAP)

A funding allocation of €2,169,313 was received from POBAL in 2020. Details of the 2020 SICAP programme are outlined in part 5.

Community Enhancement Programme

There were two rounds of the Community Enhancement Programme in 2020 with a total allocation of €361,911 which was allocated as follows:

CEP Funding 2020 Summary					
Round	Applications	Funding Available	Approved	Approve No.	=/-
1	62	81,967	€81,018.75	42	-948.25
2	45	279,944	€282,444.09	36	+2500.09
Total	107	361,911	€360,962.84	78	+1,551.84
Not complete	23			0	

***Not complete**, includes duplicates.

The LCDC also continued to monitor funding allocations carrying over from 2017, 2018 and 2019 under the Community Enhancement Programme.

Healthy Ireland

A new Round of funding opened in May 2019 and is for a two-year period and the LCDC submitted a successful application in September 2019. This programme will be delivered over a two-year period up to June 2021. A total of €246,050 has been allocated under Healthy Ireland Round 3 for the following:

Action	SDC LCDC Application	
	2019/2020	2020/2021
Action 1 Social Prescribing Project	€35,000.00	€30,000.00
Action 2 Alcohol Day Programme	€14,000.00	€13,000.00
Action 3 Physical Activity Challenge	€20,000.00	€25,000.00
Action 4 Physical Activity School Programme	€8,000.00	€ 9,000.00
Sub Total	€77,000.00	€77,000.00
Community Engagement & Merchandise	€30,000.00	
Total Original Budget	€107,000.00	€77,000.00
Mental Health Action		€32,050.00
Small Grant Scheme (Mental Health)		€30,000.00

REFLECTION ON COVID 6

A reflection from the PPN on the challenges posed during the year for its members and how they were addressed



South Dublin County public Participation Network (SDC PPN) continued to communicate and engage with the membership throughout the Covid 19 pandemic which started in March 2020. Relevant information was circulated to the network on topics such as funding, consultations, training opportunities etc. through emails, our website and social media channels. All meetings were moved online which led to a decrease in engagement with groups, but nevertheless, it was important to maintain contact during the challenging times of this pandemic, as community engagement is one of the fundamental aspects of our work.

Our workplans had to be revised and brought online and some items could not be actioned as expected. However, with innovation and resilience, we've managed to find new meaningful ways or making a difference during difficult times. For example, the environment pillar had a proposed trip to an Eco Village cancelled, but this was replaced by offering seed bombs to every primary school across the county. South Dublin PPN continued to be an active member of the South Dublin County Community Response Forum and regularly attended and contributed to online meetings of the Forum. The forum utilised the SDC PPN's database of members to keep the information flowing and provide regular updates to member groups. The COVID-19 Resources page on SDC PPN's website containing contact details of groups providing help and supports was updated regularly. This newly developed page promoted local groups actions and support services that were available to those who needed it most within South Dublin county communities. SDCPPN has 786 member groups across the county – groups and individuals stepped up in their own ways to the community call, together while keeping apart, and made a direct impact at local level throughout the lockdowns.

The pandemic had a direct effect on staffing within the PPN, as the coordinator's role was advertised in February, but unfortunately it wasn't possible to make an appointment until August, which left the support worker managing a higher workload without support from a coordinator. However, the secretariat members remained in regular contact with the support worker and the relevant personnel in SDCC, so that SDCPPN was in the position to remain operational even during these challenging times.

The pandemic has taught us all the importance of volunteers and how we should value the people in our community who spare no effort, good will, skills, determination and many other resources to come together and help those in need. It has been proven that when called on, the community groups have answered. There is no doubt that we wouldn't have come through this together without the fantastic work of people operating on shoestring budgets.

As the pandemic will hopefully end its course, the PPN will continue to strongly advocate for more resources and adequate supports to be put in place to harness and promote the incredible potential of the volunteering sector.

Bibiana Savin and Kieran Walsh, South Dublin County PPN



Appendices

Appendix 1

South Dublin County LCDC membership and attendance 2020

Representative	Sector	12/02/20	24/06/20	04/11/20	16/12/20
Private					
Mary Corcoran	Community	P	P	P	P
Phil Mulvaney	Community	P	P	P	P
Larry O'Neill	SDC Partnership	P	P	P	P
Tricia Nolan	PPN Community Pillar	A	P	P	P
Gerry Stockil	PPN Community Pillar	A	P	P	A
Justin Byrne	PPN Environment Pillar	P	A	P	
Aiden Lloyd	PPN Social Inclusion Pillar	P	P	P	P
Maurice Walsh	PPN Social Inclusion Pillar	A	P	P	P
Andy Leeson	Youth Services	P	A	P	
Public					
Cllr Kieran Mahon	Councillor	A	P	P	
Cllr Alan Hayes	Councillor	P	P	P	
Cllr David McManus	Councillor				P
Padraig Rehill	HSE	P	A	A	A
Deirdre McKeon	DDLETB	P	P	P	A
Marguerite Gallagher	DSP	P	A	P	
Thomas Rooney	LEO	P	P	P	P
Colm Ward	SDCC	P	P	P	P
		12 17	12 17	15 17	9 17
In Attendance					
Andy Lane	SDCC	P	P	P	A
Cathy Purdy	SDCC	A	-	-	-
Brian Hora	SDCC	P	P	P	P

P- Present

A- Apologies given

C- Absent conflict of interest



Appendices

Appendix 2

LCDC Subcommittees 2020

SICAP Oversight Subcommittee

- Aiden Lloyd
- Mary P. Corcoran (alternate Maurice Walsh)
- Cllr Alan Hayes
- Cllr Kieran Mahon

Funding Subcommittee

- Cllr Kieran Mahon
- Tricia Nolan
- Phil Mulvaney
- Deirdre McKeon
- Mary P. Corcoran (alternate Maurice Walsh)

Public Sector Duty Subcommittee

- Gerry Stockil
- Aiden Lloyd
- Caitriona O'Connor

Conference Subcommittee

- Mary P. Corcoran
- Aiden Lloyd
- Phil Mulvaney
- Cllr David McManus



Appendices

Appendix 3

Local Community Development Committee Funding

Funding	Source	Conduit	App. Closing Date	Funding Available	Projects Funded	Current Status
2017						
Communities Facilities Fund	DRCD	LCDC	30.06.17	€64,500	70	Funding allocated,
Healthy Ireland Fund 2017	DOH	LCDC	15.09.17	€97,603	8	Funding allocated,
RAPID Capital Grants Programme	DRCD	LCDC	24.11.17	€64,500	2	Funding allocated,
2018						
Healthy Ireland Fund 2018	DOH	LCDC	25.05.18	€75,000	6	Funding allocated, reporting completed, awaiting final 10%
Community Enhancement Programme	DRCD	LCDC	31.07.18	€169,399	58	Funding allocated,
Community Enhancement Programme (Men's Sheds)	DRCD	LCDC	31.08.18	€14,492	9	Funding allocated,
Community Enhancement Programme (Additional Funding)	DRCD	LCDC	09.11.18	€568,301	61	Funding allocated.
2019						
Healthy Ireland Fund 2019- 2020	DOH	LCDC		€246,050.00		Commencing Jan 2020
Community Enhancement Programme	DRCD	LCDC		€169,399		Funding allocated,
Community Enhancement Programme (Men's Sheds)	DRCD	LCDC		€15,707 €18,405.98 paid out	11	Funding allocated,
2020						
Community Enhancement Programme Round 1	DRCD	LCDC				
Community Enhancement Programme Round 2	DRCD	LCDC				



Appendices

Appendix 3

2020 LCDC Funding Allocations:

Community Enhancement Programme 2020 Round 1

Group /Organisation	Electoral Area	Amount Awarded by LCDC	Purpose of Grant & Funding
73rd Dublin Scouts Rathcoole	Tallaght South	1,000.00	Groundwork at the front of our building to improve drainage and even out damaged surface
Action Community & Enterprise CLG	Clondalkin	4,275.00	To upgrade and expand the CCTV system on the Neilstown Enterprise site.
Anam Cara	Tallaght Central	1,700.00	1 x Shredder (â, -300) 2 x laptops (2 x â, -700)
Bawnogue Youth and Community Centre	Clondalkin	1,000.00	To fit thermostats to radiators in the centre
Brookfield Women's Group	Tallaght South	1,000.00	Purchase new crockery, knitting machine and a television to use for training purposes
CARP	Tallaght South	1,000.00	We propose to purchase energy efficient light bulbs for the entire building.
Citywise Education	Tallaght South	3,078.00	We plan to use this grant to purchase carpet for 5 classrooms/study rooms in our centre.
Clondalkin Addiction Support Programme	Palmerstown/ Fonthill	3,400.00	CCTV
Clondalkin Equine Club	Palmerstown/ Fonthill	4,000.00	Upgrading CCTV equipment so that all areas of the club are covered by CCTV. New signage
Clondalkin Lucan Women's Network	Clondalkin	723.39	A Desk and have a press built
Clondalkin Travellers Development Group	Palmerstown/ Fonthill	500.00	To purchase a defibrillator.
Clondalkin Travellers Development Group	Palmerstown/ Fonthill	1,000.00	To install a CCTV system in the building. We are no longer the sole occupier of the building



Appendices

Appendix 3

2020 LCDC Funding Allocations:

Community Enhancement Programme 2020 Round 1

Group /Organisation	Electoral Area	Amount Awarded by LCDC	Purpose of Grant & Funding
Clondalkin Travellers Development Group	Palmerstown/ Fonthill	1,500.00	To purchase a fit for purpose kitchen in our small office area to include an adequate amount of storage and a dishwasher.
Dublin/Wicklow Mountain Rescue Team	Firhouse - Bohernabreena	1,249.90	2 handheld Tetra radios providing secure communication from mountain rescue to base
Fettercairn Community & Youth Centre	Tallaght South	2,535.00	Floor Cleaning Machine, Protective Screens, Hand Sanitizing Stations and Signage.
Fettercairn Community Enterprise CLG	Tallaght South	2,000.00	Disinfectant machine for the Coffee Dock. New Computer
Firhouse Community & Leisure Club Ltd	Tallaght Central	1,000.00	7 4ftX2ft foldable tables and 20 foldable chairs
Foróige Springfield and Fettercairn CYP	Tallaght South	1,500.00	Spray paint, painting equipment, equipment for youth space.
Fortunestown Swimming Club	Tallaght South	906.97	Timing and training equipment Portable Pace Clock, Coaches Stopwatches, Timekeepers Stopwatches, Resistance Training Bands, Resistance Training Drag Parachutes
Glenanne Sports Club	Tallaght South	900.00	Re-painting equipment store (large container) and floodlight electrical installations
Irish Red Cross Tallaght Branch	Tallaght	1,000.00	Defibrillators and mannequins for CPR and airway management training. Full body size mannequin for Emergency/Trauma training
Killinarden Community Council	Tallaght South	1,000.00	Fogger machine, a bin, a new lawnmower, grass strimmers, spade, hoe etc.
Kurdish Art Nergz Group Ireland	County	1,000.00	IT equipment



Appendices

Appendix 3

2020 LCDC Funding Allocations:

Community Enhancement Programme 2020 Round 1

Group /Organisation	Electoral Area	Amount Awarded by LCDC	Purpose of Grant & Funding
Milford Manor Residents Association	Clondalkin	1,500.00	Gazebo and outdoor tables and chairs. Outdoor sports equipment
Muintir Chronain	Clondalkin	4,466.30	IT equipment to develop Creative Spaces and crucial online interactive facilities (Virtual PODS)
NCCWN / Women Together Tallaght Network	Tallaght South	4,000.00	2 Laptops, Locked Storage Units, 2 new smaller desks for office, 3 new office chairs, Maintenance of training room Signage, Wooden Floors
NCCWN Rowlagh Women's Group	Palmerstown/ Fonthill	3,000.00	Folding Tables x 11, Folding Chairs x 14, 2 Laptops, 1 small Desk, bench, paint, and equipment for maintenance of project facilities
New Hope Residential Centre, Kiltalown	Tallaght South	1,400.00	Five new couches for the main living area of the centre. Fire safety lighting for main residential centre.
Newcastle Lyons Development Trust	Clondalkin	2,000.00	CCTV Cameras, Upgraded Alarm system. Security coded locks for defibrillator kiosk.
Quarryvale Community & Youth Centre CLG	Palmerstown/ Fonthill	1,664.20	Laptops
Ronanstown Community Childcare Centre	Palmerstown/ Fonthill	1,000.00	Comms cabinet, patch panels, punch down blocks, twin switched sockets, cable and sundries
Ronanstown Women's Community Development Project	Palmerstown/ Fonthill	8,500.00	French Doors, Perspex covered outdoor Area + Composite Decking Office Flooring
Spina Bifida/ Hydrocephalus Ireland	Clondalkin	800.00	Laptop and printer
St Bernadette's SNS	Palmerstown/ Fonthill	1,000.00	Upgrade the gardens Shovels, rakes, litter pickers, gloves, creepers, plants, seeds, flowers.



Appendices

Appendix 3

2020 LCDC Funding Allocations:

Community Enhancement Programme 2020 Round 1

Group /Organisation	Electoral Area	Amount Awarded by LCDC	Purpose of Grant & Funding
St Francis FC, Baldonnell	Clondalkin	1,000.00	Funds will go towards a new mini-Tractor to maintain and improve the playing facilities
St Maelruan's Football Club	Tallaght Central	1,000.00	CCTV
St Marks Youth Club	Tallaght South	3,500.00	Network Cabling, Wi-Fi, and PC's (2)
St. Kevin's Family Resource Centre	Tallaght Central	1,200.00	Tablets for our IT training programme.
Tallaght Community Council	Tallaght Central	1,000.00	Heritage signs for Tallaght village
The Park Community Centre	Firhouse - Bohernabreena	1,000.00	Desktop Computer and Screen' Webcam, Microsoft Office with Cloud storage capabilities and security software.
The Rights Platform	County	1,019.99	Video camera
Whitechurch Addiction Support Programme	Firhouse - Bohernabreena	4,700.00	Kitchen
Total		€81,018.75	

Community Enhancement Programme 2020 Round 2

Group /Organisation	Electoral Area	Amount Awarded by LCDC	Purpose of Grant & Funding
Anam Cara	Tallaght Central	€935.90	Laptop and an office chair
Ballyowen Castle Youth and Community Centre	Lucan	€45,000.00	Replacing windows in the centre.
Barnardos Bawnlea	Tallaght South	€5,123.00	House to be fully painted, replace the flooring in the kitchen and 'family room', with anti-slip commercial grade flooring. Contribution towards new furniture for the kitchen



Appendices

Appendix 3

2020 LCDC Funding Allocations:

Community Enhancement Programme 2020 Round 2

Group /Organisation	Electoral Area	Amount Awarded by LCDC	Purpose of Grant & Funding
Bawnogue Youth and Community Centre	Clondalkin	€5,000.00	Fire safety doors and frames, locks, hinges, spring loaded door closers for each of the 19 doors in the centre
CCU CLG T/a CEEDS	Palmerstown/ Fonthill	€26,000.00	Door, windows and shutters upgrading
Clondalkin Global Garden	Clondalkin	€1,000.00	Marquee and Generator
Clondalkin Leisure Centre	Clondalkin	€30,868.00	Rebound boards for the All-Weather facility
Clondalkin Rugby Club	Clondalkin	€900.00	Junior Footballs
Commercials Hurling Club, Rathcoole	Clondalkin	€10,000.00	Upgrade of lighting in the club and CCTV equipment
Dominic's Community Centre	Tallaght Central	€1,500.00	New roof for shed in the garden.
Firhouse Community & Leisure Club Ltd	Tallaght Central	€2,432.95	Investment in heating system, cleansing of tanks to prevent legionnaires, removal of all hand driers, replacement of light at entrance
Glenasmole Community Association Ltd	Tallaght South	€36,866.00	Works to existing building
JADD Project CLG	Tallaght South	€8,739.50	Replace 7 Windows and main entrance door
JKS Tallaght Karate	Tallaght South	€683.18	Curved Kick Shield, Free-Standing Punch Bag, Theraband CLX Consecutive Resistance Loops Touchline Medical Kit
Jobstown Boxing club	Tallaght South	€3,000.00	Punch bags, Strength & conditioning equipment, Cardio machines
Jobstown Community Centre	Tallaght South	€7,000.00	Create an outside play area.



Appendices

Appendix 3

2020 LCDC Funding Allocations:

Community Enhancement Programme 2020 Round 2

Group /Organisation	Electoral Area	Amount Awarded by LCDC	Purpose of Grant & Funding
Kingswood Community & Leisure Centre	Tallaght Central	€1,176.53	Essential works to cc Fire System. Additional smoke detectors and upgrade of sire system.
Knockmitten United	Clondalkin	€885.45	Bibs, footballs, spacemarkers, saucer cones, flags & poles, grass marking tufts.
Knockmitten United	Clondalkin	€880.03	Sprung corner flags, 3 sets of new goal post nets & new flagpoles.
Knockmitten United Football Club	Clondalkin	€2,800.00	Senior goals and trollies
Lucan Leisure Centre	Lucan	€2,514.02	Replacement glazing
Monastery Rise Residents Association	Clondalkin	€400.00	Mechanical edger, gardening equipment and bedding plants
Neart le Chéile	Palmerstown/ Fonthill	€4,500.00	Laptops, Back door, Security equipment
Peamount United Football Club	Clondalkin	€1,000.00	Boot Cleaning stations to preserve our all-weather pitches from foreign agents.
Quarryvale Community & Youth Centre	Palmerstown/ Fonthill	€7,500.00	Smart TV's, Coffee Table, Fish Tank for Sensory Processing. Repainting of the Youth Space, PS4 Console plus extra controller, XBOX Console Bluetooth Wireless PlayStation VR Starter Kit, Room Dividers, Foldable Stage
Quarryvale FRC	Palmerstown/ Fonthill	€1,000.00	Community Allotment water supply
Scoil Rince Ní Áogain – Haide, Killinarden	Tallaght South	€7,308.00	Dance Floor, mirrors, Sound Bar, and tablet, stretch bands and hurdles, sign for door
South Dublin Allotments Association	Tallaght South	€5,000.00	Refurbish hut and extend, with toilet & washing facilities, electrical power, mains water & sewage.



Appendices

Appendix 3

2020 LCDC Funding Allocations:

Community Enhancement Programme 2020 Round 2

Group /Organisation	Electoral Area	Amount Awarded by LCDC	Purpose of Grant & Funding
South Dublin Community Facilities CLG (Brookfield Youth and Community Centre)	Tallaght South	€2,500,00	Glass/windows replacement
Sruleen Community Development Association	Clondalkin	€1,000.00	Sruleen green as a wildflower meadow. This would involve clearing and planting part of the green.
St Aengus Parish and Tallaght Senior Citizen Club, Community Centre	Tallaght Central	€15,000.00	Replacing four single and two double emergency exit doors
St Jude's Men's Shed Club, Templeogue	Rathfarnham-Templeogue	€1,400.00	Purchase of Leaf blower/Hedge cutter/ general gardening equipment and printer for language/computer classes
St Kevin's Kilian's GAA Club, Ballymount	Tallaght Central	€475.53	Shelving / storage in club changing rooms
Tallaght Leisure Centre	Tallaght South	€3,656.00	Upgrade CCTV system to enhance security.
Tallaght Town AFC	Tallaght Central	€20,000.00	Showers to 4 no. dressing room, wash hand basins. back to wall toilets Oil boiler and cylinder to plant room. Fit whiterock panels to 4no. Shower areas
The WEB Project	Firhouse - Bohernabreena	€18,400.00	Bespoke shed, veg trugs with green house cover, Astro turf 100 metres square, outdoor gym and play equipment, sensory equipment
TOTAL		€279,944.09	



Appendices

Appendix 4

LEADER Projects

Projects in South Dublin County have progressed in 2020:

Description	Projects Approved		
June 2019	Fingal	DLR	SD
Projects	37	3	14
Percentage	75.2%	7.7%	17.0%
Value	€1,239,038.31	€127,703.29	€279,908.00
Dec 2019	Fingal	DLR	SD
Projects	42	4	15
Percentage	68.85%	6.56%	24.59%
Value	€1,937,896.56	€221,203.29	€774,389.44
% By value	66.06%	7.54%	26.40%
Dec 2020	Fingal	DLR	SD
Projects	58	5	15
Percentage	74.36%	6.41%	19.23%
Value	€2,481,877.75	€229,523.52	€779,907.70
% By value	71.09%	6.57%	22.34%
Food initiative	€358,907.40 for 3 projects		
% Of Rural Area Population as per LDS	67%;	8%	25%

South Dublin County live projects					
Date	Projects	Eol Stage	Stage 2-10	LAG Agreed	Completed (95%+)
January 2019	22	4	8	10	0
November 2019	29 +2*	3+2*	12	5	9
February 2020	31+2*	3+1*	13+1*	5	10
December 2020	25+2*	0	9 +1*	4+1*	12
March 2021	22+1*	1	1	7+1*	13

* DLR/Fingal/SDC project



Appendices

Appendix 4

LEADER Projects

The following community projects were substantially completed by the end of 2020:

Applicant	Project	Status	LEADER Funding
Retired Active Men's Social (RAMS) Newcastle	RAMS in Rhythm	100%	€3,696
Glenasmole Community Association, Glenasmole	Glenasmole Community Centre	100%	€9,840
Colin Harris, Newcastle	Colin Harris Business Development	100%	€10,818
Colin Harris, Newcastle	Colin Harris Design Ireland Product Launch	100%	€3,747.18
Roseanna Community Hall Committee, Bohernabreena	Roseanna Hall external upgrade	100%	€19,804
Yoltess Ltd. Ballinascorney	Footee Expansion & Upgrade	99%	€11,318
Matt Talbot Community Trust Ballinascorney	St Martin's Ballinascorney Community Facility Master Plan	100%	€19,704
Harris Turf, Newcastle	Purchase of New Equipment for Harris Turf Improvements	99%	€22,875.00
Calliaghstown Equestrian Centre, Rathcoole	Calliaghstown Equestrian Centre	100%	€24,210
Searsol Ltd, Rathcoole	Development of Typing Tutor Program Prototype	95%	€30,000
Harris Turf, Newcastle	Equipment for Harris Turf Improvement Phase 2	100%	€37,183
Slade Valley Men's Shed, Brittas	Expansion of Activities and Equipment for Slade Valley Men's Shed	100%	€20,548
Saggart Village Residents	Saggart Village Residents Rural Challenge	99%	€5,904
The Artisan Pizza Company Rathcoole		70%	€200,000
Upgrade of St Mary's GFC Facility, Saggart	Upgrade of St Mary's GFC Facility	75%	€60,258



Appendices

Appendix 5

Community Actions under Local Economic and Community Plan 2016-2021

This plan represents the strategic vision for the development of the community and the economy of South Dublin County. There are 7 economic high - level goals, and 7 community high level goals which are reported on by the LCDC:

- Goal 8:** Empower our communities to improve their health and wellbeing and quality of life by providing relevant information and accessibility to quality services
- Goal 9:** Protect and enhance our environment by providing information that is accessible to all and applying the principles of sustainable development
- Goal 10:** Reduce poverty, social exclusion and disadvantage, and improve levels of income for disadvantaged communities, including children and families
- Goal 11:** Continue to improve opportunities for our people to participate in life-long learning opportunities
- Goal 12:** Develop and empower our local workforce through improving skills and increasing the accessibility of further educational opportunities
- Goal 13:** Support our communities to influence decisions that matter in their areas and lives and encourage political, economic and cultural citizenship
- Goal 14:** Strengthen connections, cooperation and coordination between service providers, and between service providers and communities

Glossary

Phrase or Acronym	Translation	Explanation
The Act		The Local Government Reform Act 2014
AIRO		All-Island Research Observatory (Maynooth University)
BTWEA	Back to Work Enterprise Allowance	
CCMA	County and City Manager's Association	
CDP	Community Development Project	
Chief Officer		The person appointed by the Chief Executive of the Local Authority to assist the LCDC and manage the business of the Committee.
CEP	Community Enhancement Programme	(Funding) New scheme in 2018
CFS	Communities Facilities Fund (Funding)	
CIF	Community Initiative Fund (Funding)	
Clondalkin Travellers DG (CTDG)	Clondalkin Travellers Development Group	
CPG	Corporate Policy Group	
CYPSC	Children & Young People's Services Committee	Have Memorandum of Understanding with LCDC
DEIS	Delivering Equality of Opportunity in Schools	
DEASP	Department of Employment Affairs and Social Protection	
DoH	Department of Health	
Department or DRCD	Department of Rural & Community Development	To provide a renewed and consolidated focus on rural and community development in Ireland. <ul style="list-style-type: none"> • Source of funding for LCDP programmes • Provides policy framework • Enacts Government policy



Glossary

Phrase or Acronym	Translation	Explanation
ECCE	Early Childhood Care and Education	
EMRA	Eastern and Midlands Regional Assembly	
EPA	Environmental Protection Agency	
ESF	European Social Fund	The main financial instrument for supporting employment in the member states of the European Union as well as promoting economic and social cohesion. <ul style="list-style-type: none"> Supports the SICAP programme with EU funding
ESRI	Economic and Social Research Institute	
ETB	Education & Training Board	
EU	European Union	
Functional area of a Committee		The administrative area of South Dublin County Council.
FRC	Family Resource Centre	
HSDSG	Healthy South Dublin Strategy Group	Developing Memorandum of Understanding with LCDC
HSE	Health Services Executive	
ICT	Information and Communications Technology	
IHREC	Irish Human Rights and Equality Commission	Ireland's national human rights institution and national equality body.
ILDN	Irish Local Development Network	The representative body for the country's Local Development Companies who deliver RDP LEADER, Social Inclusion Community Activation Programme, Rural Social Scheme, Tús, Local Employment Service, Jobs Clubs, Rural Recreation Programme, The Walks Scheme, Back to Work Enterprise Allowance and social enterprise programmes across rural and urban Ireland.
IRIS	Integrated Reporting and Information System	Pobal computer system for managing the SICAP programme
JPC	Joint Policing Committee	Have Memorandum of Understanding with LCDC
KPI		Key Performance Indicator
LAG	LEADER Advisory Group	
LCDC	Local Community Development Committee	
LCDP	Local Community Development Programme	Any action, intervention, programme, scheme or any other support, financial or otherwise, which is concerned with promoting the interests of local communities.
LCG	Local Community Group	
LDC	Local Development Company	The company that delivers the SICAP programme usually and area-based Partnership company
LEADER	Liaison Entre Actions de Développement de l'Économie Rurale	LEADER is a French acronym that roughly translates as 'Liaison among Actors in Rural Economic Development.'
LECP	Local Economic and Community Plan	A 6-year plan jointly agreed by the LCDC and Economic SPC
LEO		Local Enterprise Office
LGAS	Local Government Audit Service	
LGMA	Local Government Manager's Association	
MOU	Memorandum of Understanding	An agreement between two (bilateral) or more (multilateral) parties. It expresses a convergence of will between the parties, indicating an intended common line of action.
NEET	Not in Employment, Education or Training	
NESC	National Economic & Social Council	
NOSP	National Office for Suicide Prevention	
NUI Maynooth	National University of Ireland, Maynooth	
PEIL	Programme for Employability, Inclusion and Learning	The Programme for Employability, Inclusion and Learning 2014-2020 is co-funded by the Government of Ireland and the ESF with a special allocation from the Youth Employment Initiative.



Glossary

Phrase or Acronym	Translation	Explanation
PI	Programme Implementer SICAP programme	The Local Development Company (LDC) who delivers the
Plan Pobal		The 6 year Local Economic and Community Plan Pobal acts as an intermediary for programmes funded by the Irish Government and the EU by supporting groups and communities that are applying for, or receiving, funding for specific programmes. In practical terms, this can involve assessing funding applications, providing support, checking financial returns, processing payments, and auditing to ensure funds are used for the intended purposes.
Publicly funded body		A body whose funds, directly or indirectly and in whole or in part, come out of moneys provided by the Oireachtas for the purpose of performing its functions.
PPN	The Public Participation Network	The South Dublin County Public Participation Network (PPN) is the representative, collective voice of community & voluntary, environmental and social inclusion organisations in South Dublin County. Resident Association
RA RACI	Responsible, Accountable, Consulted, Informed	Responsibility assignment matrix: RACI is an acronym derived from the four key responsibilities most typically used: Responsible, Accountable, Consulted, and Informed.
RAPID	Revitalising Areas by Planning, Investment and Development	Programme ran from 2002-2012. A new programme was introduced in 2017 with the RAPID Funding Scheme
Rathcoole EGF		Rathcoole European Globalisation Fund
Representatives of local community interests		In relation to the functional area of a Committee, means persons who are representative of community interests that are concerned with promoting the development of aspects of those interests within that area and such representatives may include representatives of non-governmental organisations, development agencies, community based groups, recognised associations, cultural bodies, sporting bodies and social movements and networks.
SEAI	Sustainable Energy Authority of Ireland	
SDCC	South Dublin County Council	
SDC Partnership	South Dublin County Partnership	
SDC Volunteer Centre	South Dublin County Volunteer Centre	
SICAP	Social Inclusion and Community Activation Programme	
SME	Small and medium sized enterprise	
SPC	Strategic Policy Committee	To formulate, develop, monitor and review policies which relate to the functions of South Dublin County Council and to advise the Council accordingly <ul style="list-style-type: none"> • Economic SPC agreed LECP • Community SPC deals with community related issues of SDCC
Standing Orders		The Rules of Debate, the Agenda, and any “local” rules concerning the conduct of the meeting are loosely referred to as “Standing Orders.”
TU Dublin	Technological University Dublin	Previously the Institute of Technology Tallaght
Tusla		The Child & Family Agency



Address: LCDCC
Housing, Social & Community Development Department
South Dublin County Council
County Hall
Tallaght
Dublin 24
D24 A3XC

Web: <https://sdcc.ie/en/services/community/local-community-development-committee/>
Email: comdevof@sdblincoco.ie

Telephone: 01-414-9000