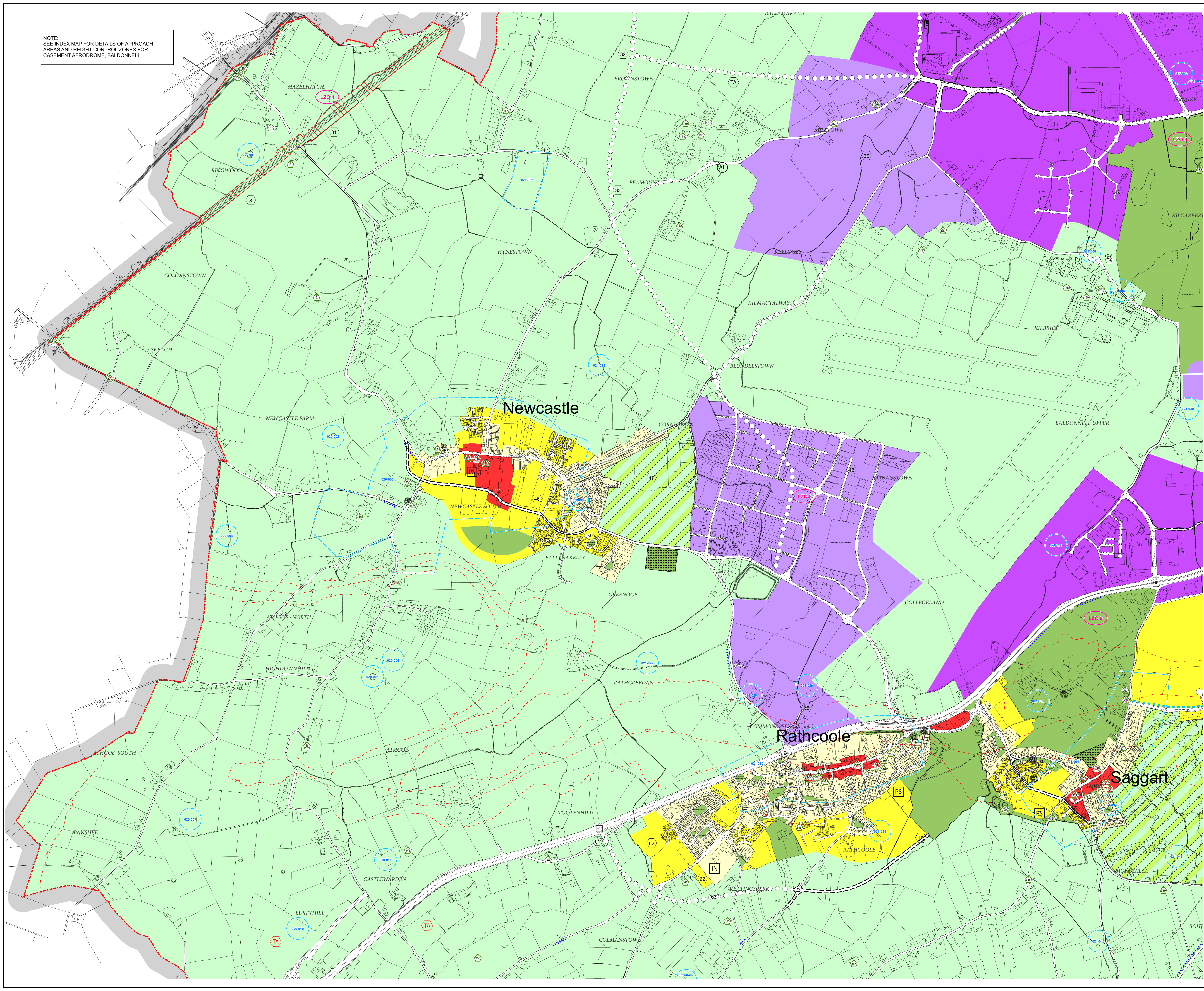


NOTE:
 SEE INDEX MAP FOR DETAILS OF APPROACH
 AREAS AND HEIGHT CONTROL ZONES FOR
 CASEMENT AERODROME, BALDONNELL



USE ZONING OBJECTIVES

- Objective A To provide for new Residential Communities in accordance with approved Area Plans
- Objective A1 To protect and improve Rural Amenity and to provide for the development of Agriculture
- Objective B To protect, improve and provide for the future development of the County Town of Tallaght
- Objective CT To protect, provide for and/or improve District Centre facilities
- Objective DC To facilitate opportunities for intensive employment uses complemented by mixed-use development based on a principle of street networks and in accordance with approved plans
- Objective EP1 To facilitate opportunities for manufacturing, Research and Development facilities, light industry and employment and enterprise related uses in industrial areas and business parks
- Objective EP2 To provide for distribution, warehouse, and logistic and related industry facilities which require good access to the major road network within a good quality environment
- Objective EPS To preserve and provide for Open Space and Recreational Amenities
- Objective F To protect and improve High Amenity Areas
- Objective G To preserve a Green Belt between Development Areas
- Objective GB To protect and enhance the outstanding natural character of the Dublin Mountains Area
- Objective H To protect and enhance the outstanding character and amenity of the Liffey Valley and to preserve its strategic importance as a green break between urban settlement areas
- Objective I To protect, provide for and/or improve Local Centre facilities
- Objective LC To protect, provide for and/or improve Town Centre facilities
- Objective TC Refer to Planning Scheme for Details (Strategic Development Zone)

SPECIFIC OBJECTIVES

- Local Zoning Objective and Boundary (LZO 2)
- Specific Local Objective and Boundary (2)
- Junction Proposals (square symbol)
- Long Term Road Proposals (dotted line)
- 6 Year Road Proposals (dashed line)
- Cycleways (dashed line with dots)
- SDZ Road Plans (dashed line with dots)
- LRT Proposals (dotted line with dots)
- To protect and preserve Trees and Woodlands (tree symbol)
- To provide an Amenity Lay-by (AL symbol)
- To provide for Car Parking (P symbol)
- To protect and / or provide for a Burial Ground (grid symbol)
- To protect and / or provide for Institutional use in open lands (IN symbol)
- To provide for a Post Primary School or other Institution (IN symbol)
- To provide for a Primary School (PS symbol)
- To provide for Local Centre (LC symbol)
- To provide for Traveller Accommodation (TA symbol)
- To Provide for Traveller Accommodation (Site to be selected) (TA symbol)
- Record of Monuments and Places (For Areas of Archaeological Potential see Index Map) (circle with cross symbol)
- Record of Protected Structures (circle with cross symbol)
- SEVESO Sites and Boundary (triangle with cross symbol)
- Architectural Conservation Areas (dashed line with dots)
- Special Areas of Conservation (dashed line with dots)
- Proposed Natural Heritage Areas (dashed line with dots)
- Liffey Valley Special Area Amenity Order 1990 (dashed line with dots)
- Area Sensitive to Forestry (ASA symbol)
- Protect and Preserve Significant Views (dashed line with dots)
- Tree Preservation Order (TPO symbol)
- Contour Lines (dashed line with dots)
- Bohemabresna Reservoir Catchment Area (dashed line with dots)
- Glensnole / Bohemabresna Study Area (dashed line with dots)
- County Boundary (dashed line with dots)

Note:
 The lines of the Road Proposals shown on this map are diagrammatic only
 and are subject to change during the detailed design process.

Ordnance Survey Ireland Licence No.
 2010/23/CCMA/South Dublin County Council

SCALE 1:7,500



Frank Novin
 Director of Planning.
Colin Ryan
 B.A., M.Sc., M.B.A.
 Senior Planner.