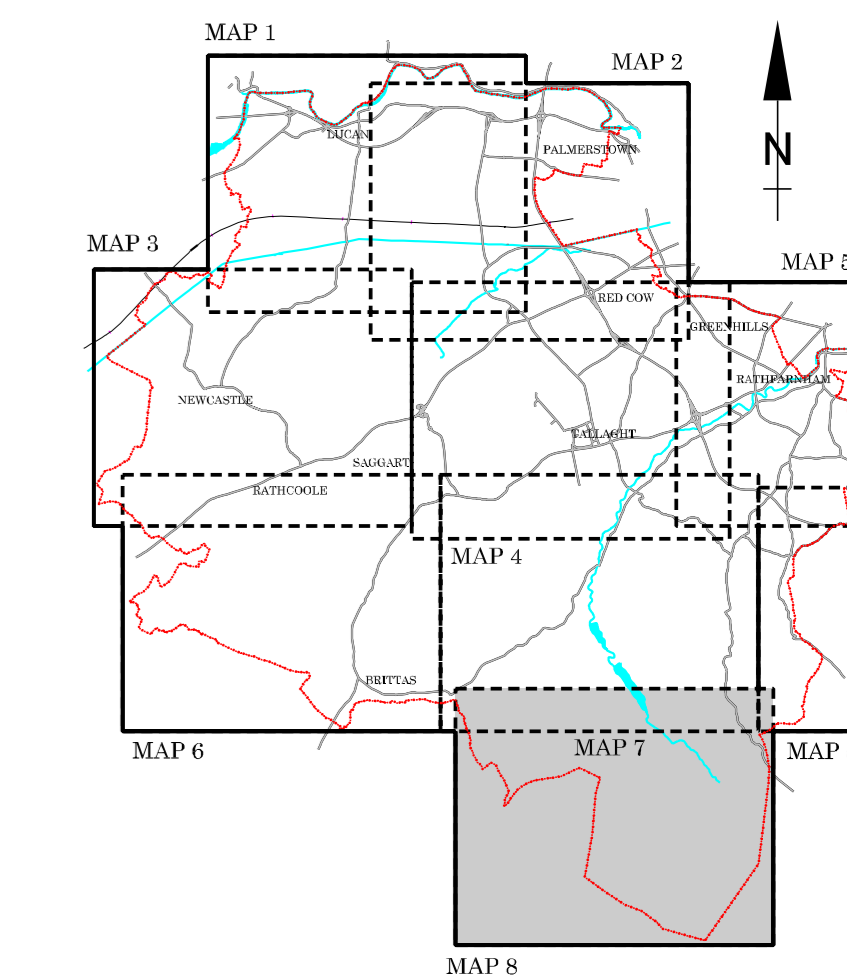


# SOUTH DUBLIN COUNTY COUNCIL



## DEVELOPMENT PLAN 2004 - 2010

### USE ZONING OBJECTIVES

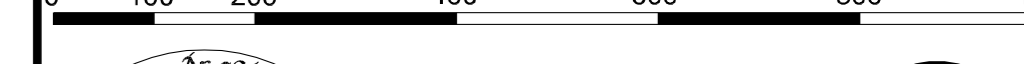
Objective A	To protect and / or improve Residential Amenity	
Objective AI	To provide for new Residential Communities in accordance with Approved Area Plans.	
Objective B	To protect and improve Rural Amenity and to provide for the development of Agriculture.	
Objective CT	To protect, improve and provide for the future development of the County Town of Tallaght.	
Objective TC	To protect, provide for and / or improve Town Centre facilities.	
Objective DC	To protect, provide for and / or improve District Centre facilities.	
Objective LC	To protect, provide for and / or improve Local Centre facilities.	
Objective E	To provide for Enterprise, Employment and Related Uses.	
Objective F	To preserve and provide for Open Space and Recreational Amenities.	
Objective G	To protect and improve High Amenity Areas.	
Objective GB	To preserve a "Green Belt" between development areas.	
Objective H	To protect and enhance the outstanding natural character of the Dublin Mountain Area.	

### SPECIFIC OBJECTIVES

Local Zoning Objective:	
Local Zoning Objective Boundary:	
Nan Road Local Zoning Objective:	
Junction Proposals	
Road Proposals -- Long Term	
Road Proposals -- 6 Year	
LRT Proposals	
Railway Buffer Zone	
To provide a Park and Ride Facility	
Cycleways	
To protect and / or provide for a Burial Ground	
To protect and / or provide for Institutional Use in open lands	
To provide for Primary School	
To provide for a Post Primary School or other Institution	
To provide for Local Centre	
To provide for Traveller Accommodation	
To provide for Traveller Accommodation (Site yet to be selected)	
Record of Monuments and Places (For Areas of Archaeological Potential see Index Map.)	
Record of Protected Structures	
Architectural Conservation Areas	
Adamstown Planning Scheme Boundary (See Planning Scheme for details)	
Special Areas of Conservation	
Proposed Natural Heritage Areas	
Liffey Valley Special Area Amenity Order 1990	
Areas Sensitive to Forestry	
To Preserve Views	
To provide an Amenity Lay-by	
Specific Local Objective (See Written Statement)	
Objective Boundary	
Tree Preservation Order	
Tree Preservation Order Boundary	
Contour Lines	
Electoral Districts	
Glenasmole / Bohernabreena Study Area	
Bohernabreena Reservoir Catchment Area	
County Boundary	

Note: The lines of the Road Proposals shown on this map are diagrammatic only and are subject to change during the detailed design process.

SCALE 1:7,500



**Kieran Kennedy**  
 M.Sc., M.Appl.Sc., M.R.T.P.I., A.S.C.  
 Director of Planning.

**Michael Kenny**  
 B.A., M.R.U.P., Dip.U.D., M.P.I.  
 Senior Planner.

