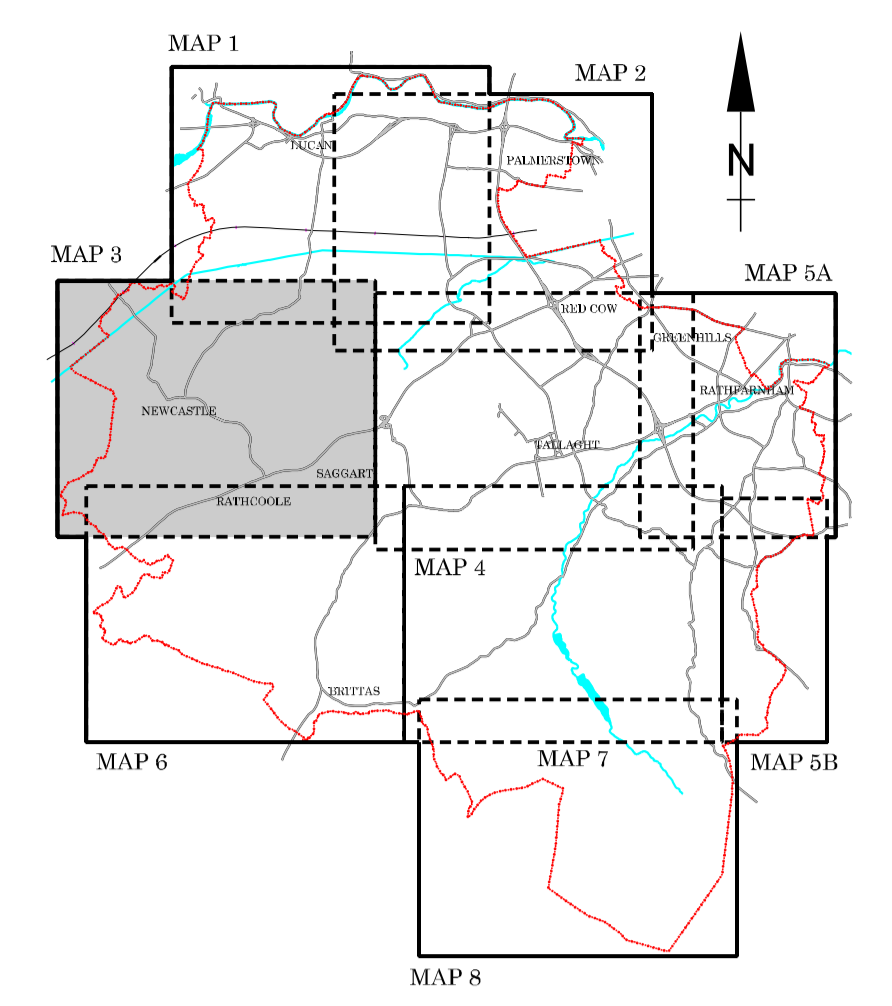


NOTE:
SEE INDEX MAP FOR DETAILS OF APPROACH
AREAS AND HEIGHT CONTROL ZONES FOR
CASEMENT AERODROME, BALDONNELL.

SOUTH DUBLIN COUNTY COUNCIL



DEVELOPMENT PLAN 2004 - 2010

USE ZONING OBJECTIVES

- Objective A To protect and / or improve Residential Amenity. ■
- Objective A1 To provide for new Residential Communities in accordance with Approved Area Plans. ■
- Objective B To protect and improve Rural Amenity and to provide for the development of Agriculture. ■
- Objective CT To protect, improve and provide for the future development of the County Town of Tallaght. ■
- Objective TC To protect, provide for and / or improve Town Centre facilities. ■
- Objective DC To protect, provide for and / or improve District Centre facilities. ■
- Objective LC To protect, provide for and / or improve Local Centre facilities. ■
- Objective E To provide for Enterprise, Employment and Related Uses. ■
- Objective F To preserve and provide for Open Space and Recreational Amenities. ■
- Objective G To protect and improve High Amenity Areas. ■
- Objective GB To preserve a "Green Belt" between development areas. ■
- Objective H To protect and enhance the outstanding natural character of the Dublin Mountain Area. ■

SPECIFIC OBJECTIVES

- Local Zoning Objective. ○ (LZO 1)
- Local Zoning Objective Boundary. ---
- Nass Road Local Zoning Objective. ---
- Junction Proposals. □
- Road Proposals - Long Term. ○ ○ ○ ○
- Road Proposals - 6 Year. ---
- LRT Proposals. ---
- Railway Buffer Zone. ---
- To provide a Park and Ride Facility. P
- To protect and / or provide for a Burial Ground. ■
- To protect and / or provide for Institutional Use in open lands. IN
- To provide for Primary School. PS
- To provide for a Post Primary School or other Institution. IN
- To provide for Local Centre. LC
- To provide for Traveller Accommodation. TA
- To provide for Traveller Accommodation (Site yet to be selected). TA
- Record of Monuments and Places (For Areas of Archaeological Potential see Index Map). ○ (025-004)
- Record of Protected Structures. PS
- Architectural Conservation Areas. ---
- Adamsstown Planning Scheme Boundary (See Planning Scheme for details). ---
- Special Areas of Conservation. ---
- Proposed Natural Heritage Areas. ---
- Liffey Valley Special Area Amenity Order 1990. ---
- To protect and preserve Trees and Woodlands. *
- Areas Sensitive to Forestry. ---
- To Preserve Views. ---
- To provide an Amenity Lay-by. ---
- Specific Local Objective (See Written Statement). ---
- Objective Boundary. ---
- Tree Preservation Order. ---
- Tree Preservation Order Boundary. ---
- Contour Lines. --- 350 m
- Electrical Districts. ---
- Glennacole / Bohernabreena Study Area. ---
- Bohernabreena Reservoir Catchment Area. ---
- County Boundary. ---

Note:
The lines of the Road Proposals shown on this map are diagrammatic only and are subject to change during the detailed design process.

SCALE 1:7,500

Kieran Kennedy
 M.Sc., M.Appl.Sc., M.R.T.P.I., A.S.C.S.
 Director of Planning
 Michael Kenny
 B.A., M.R.U.P., Dip.U.D., M.L.P.I.
 Senior Planner